

Product datasheet for **TA368674S**

PPAP2C (PLPP2) Rabbit Polyclonal Antibody

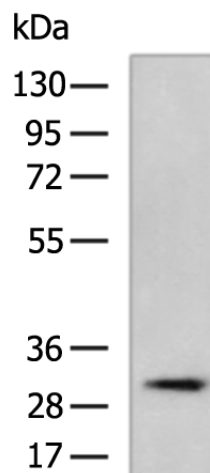
Product data:

Product Type:	Primary Antibodies
Applications:	IHC, WB
Recommended Dilution:	WB: 500-2000 WB positive control: MCF7 cell lysate IHC: 50-200 Positive control: Human esophagus cancer Predicted cell location: Cytoplasm
Reactivity:	Human
Host:	Rabbit
Isotype:	IgG
Clonality:	Polyclonal
Immunogen:	Synthetic peptide of human PLPP2
Formulation:	pH7.4 PBS, 0.05% NaN ₃ , 40% Glycerol
Purification:	Antigen affinity purification
Conjugation:	Unconjugated
Storage:	Store at -20°C.
Stability:	1 year
Predicted Protein Size:	33 kDa
Gene Name:	phospholipid phosphatase 2
Database Link:	Entrez Gene 8612 Human O43688

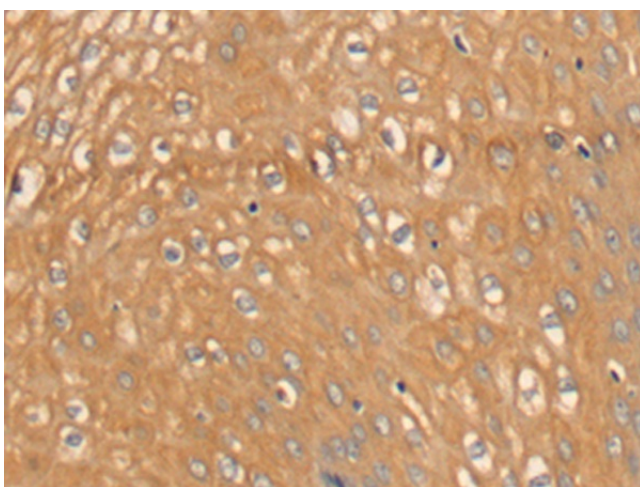
Background: The protein encoded by this gene is a member of the phosphatidic acid phosphatase (PAP) family. PAPs convert phosphatidic acid to diacylglycerol, and function in de novo synthesis of glycerolipids as well as in receptor-activated signal transduction mediated by phospholipase D. This protein is similar to phosphatidic acid phosphatase type 2A (PPAP2A) and type 2B (PPAP2B). All three proteins contain 6 transmembrane regions, and a consensus N-glycosylation site. This protein has been shown to possess membrane associated PAP activity. Three alternatively spliced transcript variants encoding distinct isoforms have been reported.



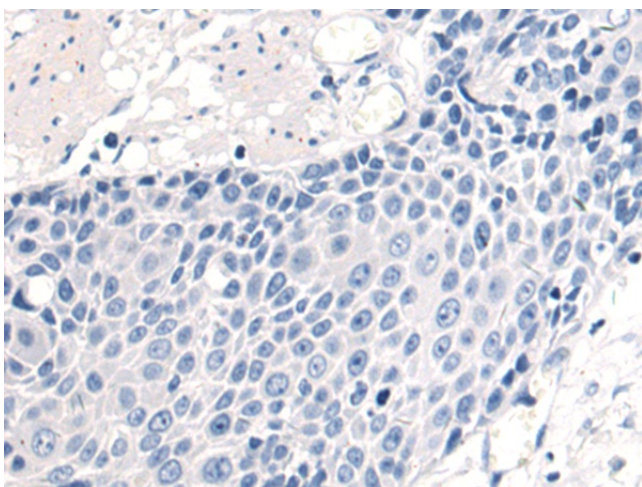
[View online »](#)

Product images:

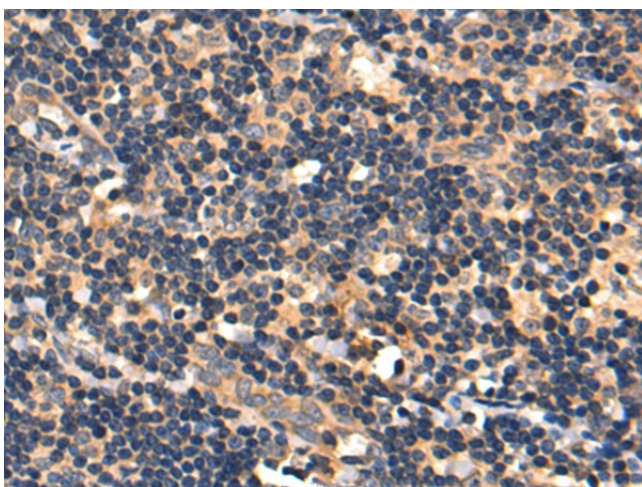
Gel: 8%SDS-PAGE
Lysate: 40 μ g
Lane: MCF7 cell lysate
Primary antibody: [TA368674] (PLPP2 Antibody) at dilution 1/550
Secondary antibody: Goat anti rabbit IgG at 1/5000 dilution
Exposure time: 1 minute



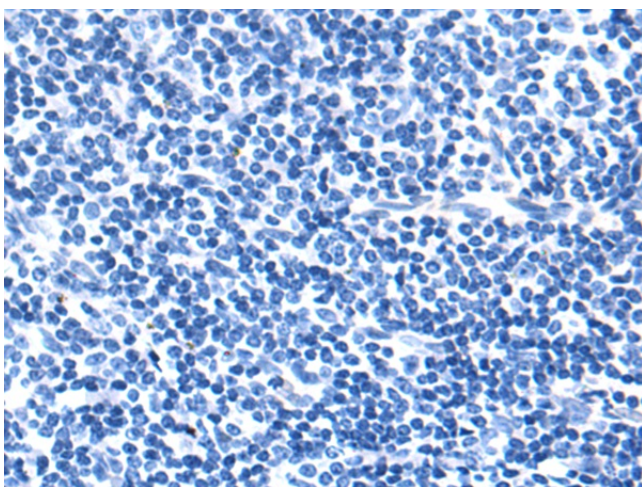
Immunohistochemistry of paraffin-embedded Human esophagus cancer tissue using [TA368674] (PLPP2 Antibody) at dilution 1/60 (Original magnification: $\times 200$)



Immunohistochemistry of paraffin-embedded Human esophagus cancer tissue using [TA368674] (PLPP2 Antibody) at dilution 1/60, treated with synthetic peptide. (Original magnification: $\times 200$)



Immunohistochemistry of paraffin-embedded Human tonsil tissue using [TA368674] (PLPP2 Antibody) at dilution 1/60 (Original magnification: $\times 200$)



Immunohistochemistry of paraffin-embedded Human tonsil tissue using [TA368674] (PLPP2 Antibody) at dilution 1/60, treated with synthetic peptide. (Original magnification: $\times 200$)