

Product datasheet for **TA368673S**

Cyclin F (CCNF) Rabbit Polyclonal Antibody

Product data:

| | |
|-------------------------|---|
| Product Type: | Primary Antibodies |
| Applications: | IHC, WB |
| Recommended Dilution: | WB: 500-2000 WB positive control: 293T cell lysate IHC: 50-100 Positive control: Human colorectal cancer Predicted cell location: Cytoplasm |
| Reactivity: | Human |
| Host: | Rabbit |
| Isotype: | IgG |
| Clonality: | Polyclonal |
| Immunogen: | Synthetic peptide of human CCNF |
| Formulation: | pH7.4 PBS, 0.05% NaN ₃ , 40% Glycerol |
| Purification: | Antigen affinity purification |
| Conjugation: | Unconjugated |
| Storage: | Store at -20°C. |
| Stability: | 1 year |
| Predicted Protein Size: | 88 kDa |
| Gene Name: | cyclin F |
| Database Link: | Entrez Gene 899 Human P41002 |



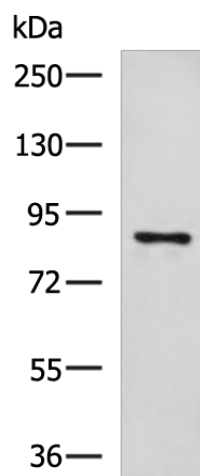
[View online »](#)

Background:

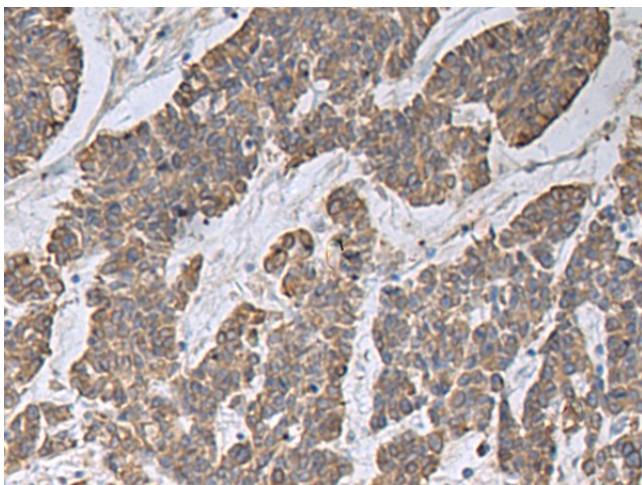
This gene encodes a member of the cyclin family. Cyclins are important regulators of cell cycle transitions through their ability to bind and activate cyclin-dependent protein kinases. This member also belongs to the F-box protein family which is characterized by an approximately 40 amino acid motif, the F-box. The F-box proteins constitute one of the four subunits of the ubiquitin protein ligase complex called SCFs (SKP1-cullin-F-box), which function in phosphorylation-dependent ubiquitination. The F-box proteins are divided into 3 classes: Fbws containing WD-40 domains, Fbls containing leucine-rich repeats, and Fbxs containing either different protein-protein interaction modules or no recognizable motifs. The protein encoded by this gene belongs to the Fbxs class and it was one of the first proteins in which the F-box motif was identified.

Synonyms:

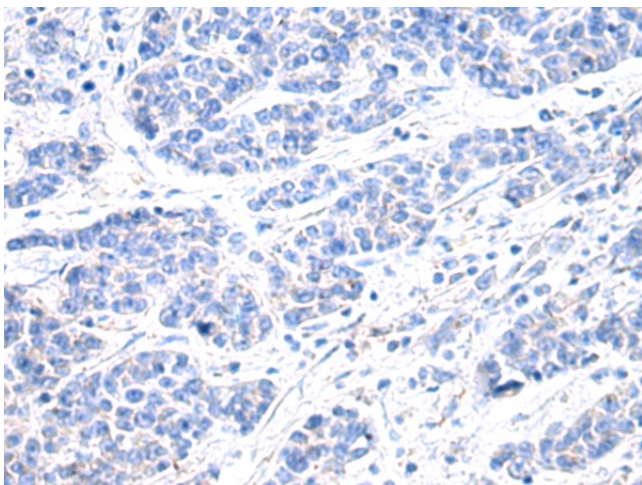
FBX1; FBXO1

Product images:

Gel: 6%SDS-PAGE
Lysate: 40 µg
Lane: 293T cell lysate
Primary antibody: [TA368673] (CCNF Antibody) at dilution 1/800
Secondary antibody: Goat anti rabbit IgG at 1/5000 dilution
Exposure time: 2 minutes



Immunohistochemistry of paraffin-embedded Human colorectal cancer tissue using [TA368673] (CCNF Antibody) at dilution 1/30 (Original magnification: ×200)



Immunohistochemistry of paraffin-embedded Human colorectal cancer tissue using [TA368673] (CCNF Antibody) at dilution 1/30, treated with synthetic peptide. (Original magnification: ×200)