

## Product datasheet for **TA368667S**

### HTRA2 Rabbit Polyclonal Antibody

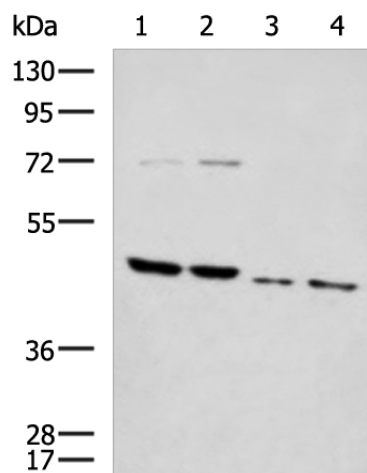
#### Product data:

Product Type:	Primary Antibodies
Applications:	WB
Recommended Dilution:	WB: 500-2000 WB positive control: Rat brain tissue, Mouse brain tissue, Raji and 231 cell lysates
Reactivity:	Human, Mouse, Rat
Host:	Rabbit
Isotype:	IgG
Clonality:	Polyclonal
Immunogen:	Synthetic peptide of human HTRA2
Formulation:	pH7.4 PBS, 0.05% NaN <sub>3</sub> , 40% Glycerol
Purification:	Antigen affinity purification
Conjugation:	Unconjugated
Storage:	Store at -20°C.
Stability:	1 year
Predicted Protein Size:	49 kDa
Gene Name:	HtrA serine peptidase 2
Database Link:	<a href="#">Entrez Gene 27429 Human O43464</a>
Background:	This gene encodes a serine protease. The protein has been localized in the endoplasmic reticulum and interacts with an alternatively spliced form of mitogen-activated protein kinase 14. The protein has also been localized to the mitochondria with release to the cytosol following apoptotic stimulus. The protein is thought to induce apoptosis by binding the apoptosis inhibitory protein baculoviral IAP repeat-containing 4. Nuclear localization of this protein has also been observed. Alternate splicing of this gene results in multiple transcript variants encoding different isoforms.
Synonyms:	OMI; PARK13; PRSS25



[View online »](#)

## Product images:



Gel: 8%SDS-PAGE  
Lysate: 40  $\mu$ g  
Lane 1-4: Rat brain tissue  
Mouse brain tissue  
Raji and 231 cell lysates  
Primary antibody: [TA368667] (HTRA2 Antibody)  
at dilution 1/1000  
Secondary antibody: Goat anti rabbit IgG at  
1/5000 dilution  
Exposure time: 2 minutes