

Product datasheet for **TA368664S**

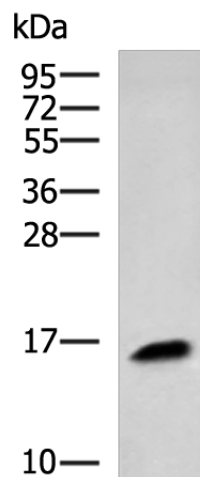
KRTAP1-1 Rabbit Polyclonal Antibody

Product data:

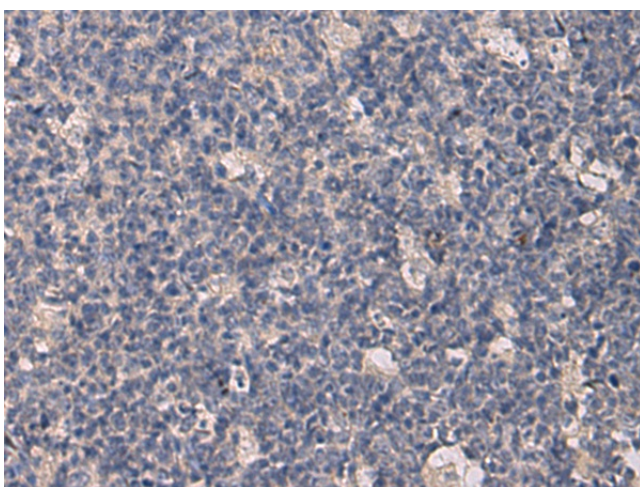
Product Type:	Primary Antibodies
Applications:	IHC, WB
Recommended Dilution:	WB: 500-2000 WB positive control: HepG2 cell lysate IHC: 25-50 Positive control: Human tonsil Predicted cell location: Cytoplasm
Reactivity:	Human
Host:	Rabbit
Isotype:	IgG
Clonality:	Polyclonal
Immunogen:	Synthetic peptide of human KRTAP1-1
Formulation:	pH7.4 PBS, 0.05% NaN ₃ , 40% Glycerol
Purification:	Antigen affinity purification
Conjugation:	Unconjugated
Storage:	Store at -20°C.
Stability:	1 year
Predicted Protein Size:	18 kDa
Gene Name:	keratin associated protein 1-1
Database Link:	Entrez Gene 81851 Human Q07627

Background: This protein is a member of the keratin-associated protein (KAP) family. The KAP proteins form a matrix of keratin intermediate filaments which contribute to the structure of hair fibers. KAP family members appear to have unique, family-specific amino- and carboxyl-terminal regions and are subdivided into three multi-gene families according to amino acid composition: the high sulfur, the ultrahigh sulfur, and the high tyrosine/glycine KAPs. This protein is a member of the high sulfur KAP family and the gene is localized to a cluster of KAPs at 17q12-q21.

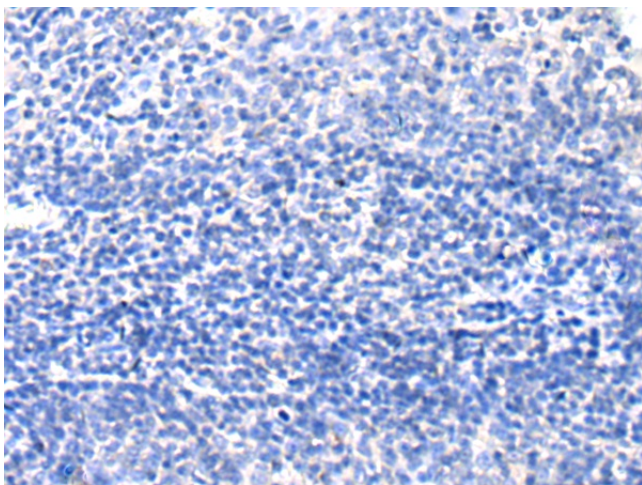

[View online »](#)

Product images:


Gel: 12%SDS-PAGE
 Lysate: 40 µg
 Lane: HepG2 cell lysate
 Primary antibody: [TA368664] (KRTAP1-1 Antibody) at dilution 1/700
 Secondary antibody: Goat anti rabbit IgG at 1/5000 dilution
 Exposure time: 2 minutes



Immunohistochemistry of paraffin-embedded Human tonsil using [TA368664] (KRTAP1-1 Antibody) at dilution 1/30 (Original magnification: ×200)



Immunohistochemistry of paraffin-embedded Human tonsil using [TA368664] (KRTAP1-1 Antibody) at dilution 1/30, treated with synthetic peptide. (Original magnification: ×200)