

## Product datasheet for **TA368650S**

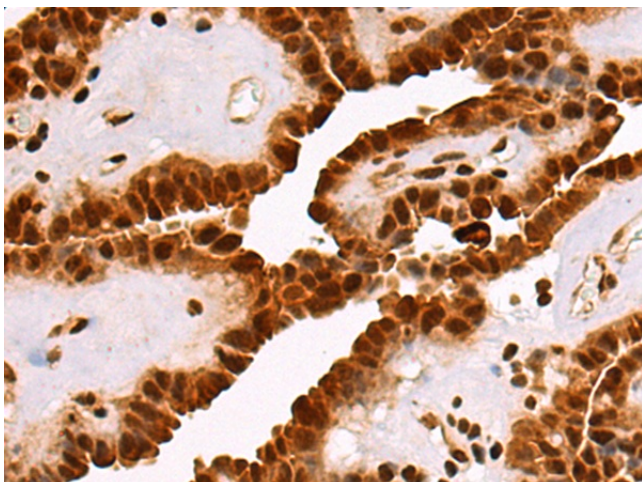
### RBMS1 Rabbit Polyclonal Antibody

#### Product data:

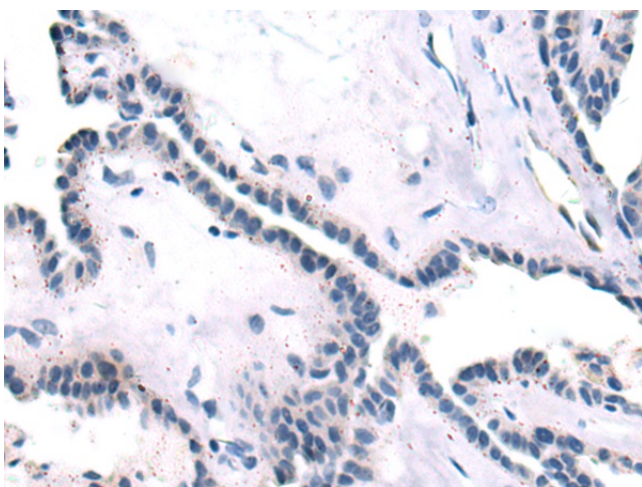
|                       |  |
|-----------------------|--|
| Product Type:         | Primary Antibodies   |
| Applications:         | IHC  |
| Recommended Dilution: | IHC: 50-100<br>Positive control: Human thyroid cancer<br>Predicted cell location: Nucleus  |
| Reactivity:           | Human, Mouse, Rat  |
| Host:                 | Rabbit   |
| Isotype:              | IgG  |
| Clonality:            | Polyclonal   |
| Immunogen:            | Synthetic peptide of human RBMS1   |
| Formulation:          | pH7.4 PBS, 0.05% NaN <sub>3</sub> , 40% Glycerol   |
| Purification:         | Antigen affinity purification  |
| Conjugation:          | Unconjugated   |
| Storage:              | Store at -20°C.  |
| Stability:            | 1 year   |
| Gene Name:            | RNA binding motif single stranded interacting protein 1  |
| Database Link:        | <a href="#">Entrez Gene 5937 Human P29558</a>  |
| Background:           | This gene encodes a member of a small family of proteins which bind single stranded DNA/RNA. These proteins are characterized by the presence of two sets of ribonucleoprotein consensus sequence (RNP-CS) that contain conserved motifs, RNP1 and RNP2, originally described in RNA binding proteins, and required for DNA binding. These proteins have been implicated in such diverse functions as DNA replication, gene transcription, cell cycle progression and apoptosis. Several transcript variants, resulting from alternative splicing and encoding different isoforms, have been described. A pseudogene for this locus is found on chromosome 12. |
| Synonyms:             | C2orf12; DKFZp564H0764; HCC-4; MGC3331; MGC15146; MGC70597; MGC97258; MGC97270; MGC97282; MGC99543; MSSP; MSSP-1; MSSP-2; MSSP-3; MSSP1; SCR2; YC1   |



[View online »](#)

**Product images:**

Immunohistochemistry of paraffin-embedded Human thyroid cancer tissue using [TA368650] (RBMS1 Antibody) at dilution 1/35 (Original magnification:  $\times 200$ )



Immunohistochemistry of paraffin-embedded Human thyroid cancer tissue using [TA368650] (RBMS1 Antibody) at dilution 1/35, treated with synthetic peptide. (Original magnification:  $\times 200$ )