

## Product datasheet for **TA368641S**

### LRP1 Rabbit Polyclonal Antibody

#### Product data:

Product Type:	Primary Antibodies
Applications:	IHC, WB
Recommended Dilution:	WB: 500-2000 WB positive control: Mouse brain tissue, Human cerebrum tissue lysates IHC: 50-200 Positive control: Human colorectal cancer Predicted cell location: Cytoplasm
Reactivity:	Human, Mouse
Host:	Rabbit
Isotype:	IgG
Clonality:	Polyclonal
Immunogen:	Synthetic peptide of human LRP1
Formulation:	pH7.4 PBS, 0.05% NaN <sub>3</sub> , 40% Glycerol
Purification:	Antigen affinity purification
Conjugation:	Unconjugated
Storage:	Store at -20°C.
Stability:	1 year
Predicted Protein Size:	505 kDa
Gene Name:	LDL receptor related protein 1
Database Link:	<a href="#">Entrez Gene 4035 Human Q07954</a>



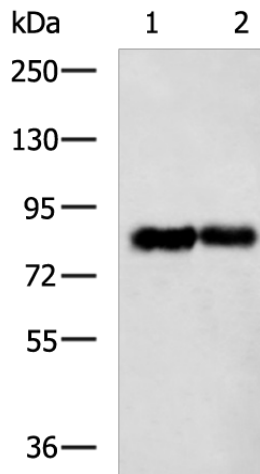
[View online »](#)

**Background:**

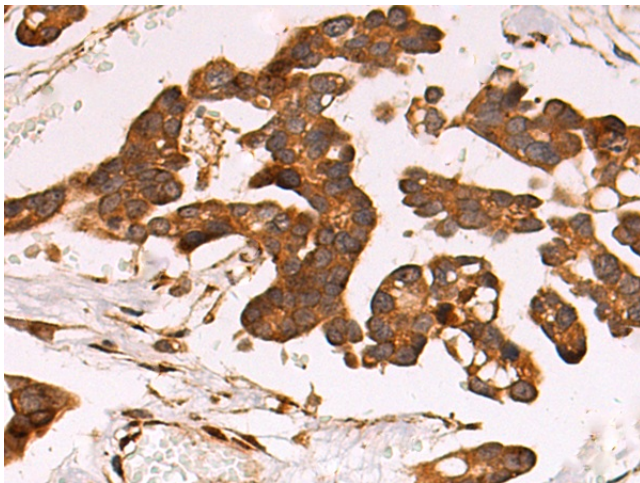
This gene encodes a member of the low-density lipoprotein receptor family of proteins. The encoded preproprotein is proteolytically processed by furin to generate 515 kDa and 85 kDa subunits that form the mature receptor (PMID: 8546712). This receptor is involved in several cellular processes, including intracellular signaling, lipid homeostasis, and clearance of apoptotic cells. In addition, the encoded protein is necessary for the alpha 2-macroglobulin-mediated clearance of secreted amyloid precursor protein and beta-amyloid, the main component of amyloid plaques found in Alzheimer patients. Expression of this gene decreases with age and has been found to be lower than controls in brain tissue from Alzheimer's disease patients.

**Synonyms:**

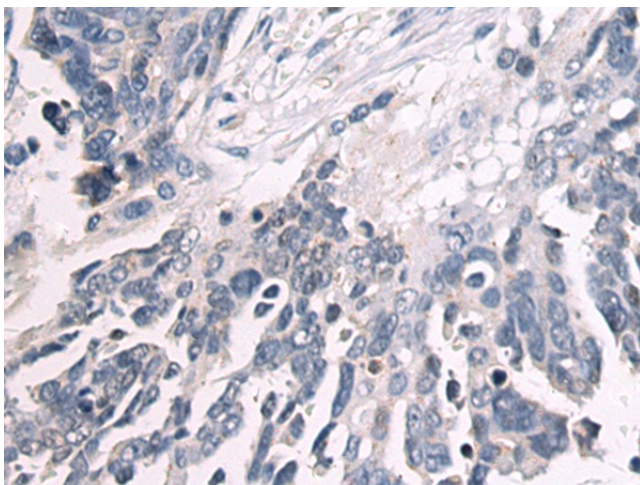
A2MR; APOER; APR; CD91; FLJ16451; IGFBP3R; LRP; MGC88725; TGFBR5

**Product images:**

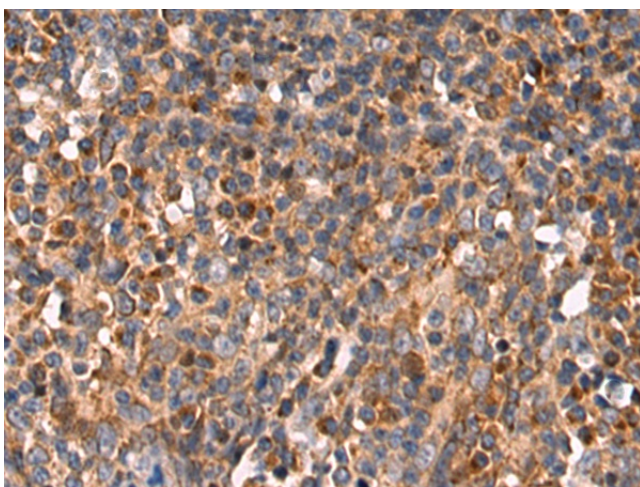
Gel: 6%SDS-PAGE  
Lysate: 40 µg  
Lane 1-2: Mouse brain tissue  
Human cerebrum tissue lysates  
Primary antibody: [TA368641] (LRP1 Antibody) at dilution 1/800  
Secondary antibody: Goat anti rabbit IgG at 1/5000 dilution  
Exposure time: 10 seconds



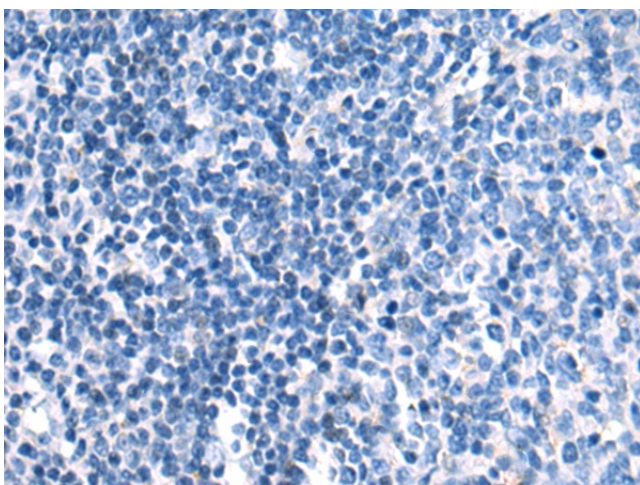
Immunohistochemistry of paraffin-embedded Human colorectal cancer tissue using [TA368641] (LRP1 Antibody) at dilution 1/50 (Original magnification: ×200)



Immunohistochemistry of paraffin-embedded Human colorectal cancer tissue using [TA368641] (LRP1 Antibody) at dilution 1/50, treated with synthetic peptide. (Original magnification:  $\times 200$ )



Immunohistochemistry of paraffin-embedded Human tonsil tissue using [TA368641] (LRP1 Antibody) at dilution 1/50 (Original magnification:  $\times 200$ )



Immunohistochemistry of paraffin-embedded Human tonsil tissue using [TA368641] (LRP1 Antibody) at dilution 1/50, treated with synthetic peptide. (Original magnification:  $\times 200$ )