

## Product datasheet for **TA368640S**

### APAF1 Rabbit Polyclonal Antibody

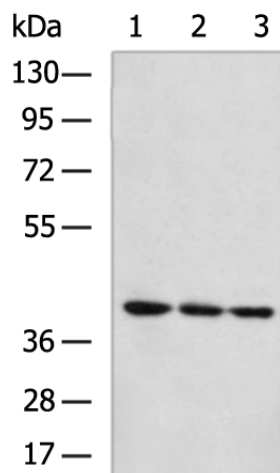
#### Product data:

Product Type:	Primary Antibodies
Applications:	WB
Recommended Dilution:	WB: 500-2000 WB positive control: 293T cell, Jurkat cell, Hela cell lysates
Reactivity:	Human, Mouse, Rat
Host:	Rabbit
Isotype:	IgG
Clonality:	Polyclonal
Immunogen:	Synthetic peptide of human APAF1
Formulation:	pH7.4 PBS, 0.05% NaN <sub>3</sub> , 40% Glycerol
Purification:	Antigen affinity purification
Conjugation:	Unconjugated
Storage:	Store at -20°C.
Stability:	1 year
Predicted Protein Size:	142 kDa
Gene Name:	apoptotic peptidase activating factor 1
Database Link:	<a href="#">Entrez Gene 317 Human O14727</a>
Background:	This gene encodes a cytoplasmic protein that initiates apoptosis. This protein contains several copies of the WD-40 domain, a caspase recruitment domain (CARD), and an ATPase domain (NB-ARC). Upon binding cytochrome c and dATP, this protein forms an oligomeric apoptosome. The apoptosome binds and cleaves caspase 9 preproprotein, releasing its mature, activated form. Activated caspase 9 stimulates the subsequent caspase cascade that commits the cell to apoptosis. Alternative splicing results in several transcript variants encoding different isoforms.
Synonyms:	APAF-1; CED4; DKFZp781B1145; KIAA0413



[View online »](#)

## Product images:



Gel: 6%SDS-PAGE  
Lysate: 40  $\mu$ g  
Lane 1-3: 293T cell  
Jurkat cell  
Hela cell lysates  
Primary antibody: [TA368640] (APAF1 Antibody)  
at dilution 1/800  
Secondary antibody: Goat anti rabbit IgG at  
1/5000 dilution  
Exposure time: 2 minutes