

Product datasheet for **TA368640**

APAF1 Rabbit Polyclonal Antibody

Product data:

Product Type:	Primary Antibodies
Applications:	WB
Recommended Dilution:	WB: 500-2000 WB positive control: 293T cell, Jurkat cell, Hela cell lysates
Reactivity:	Human, Mouse, Rat
Host:	Rabbit
Isotype:	IgG
Clonality:	Polyclonal
Immunogen:	Synthetic peptide of human APAF1
Formulation:	pH7.4 PBS, 0.05% NaN ₃ , 40% Glycerol
Concentration:	lot specific
Purification:	Antigen affinity purification
Conjugation:	Unconjugated
Storage:	Store at -20°C.
Stability:	1 year
Predicted Protein Size:	142 kDa
Gene Name:	apoptotic peptidase activating factor 1
Database Link:	Entrez Gene 317 Human O14727

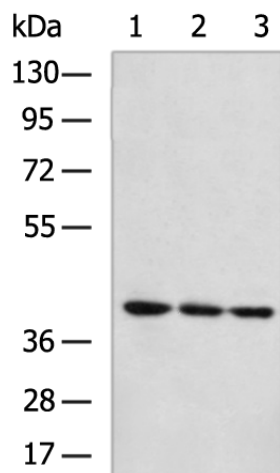
Background: This gene encodes a cytoplasmic protein that initiates apoptosis. This protein contains several copies of the WD-40 domain, a caspase recruitment domain (CARD), and an ATPase domain (NB-ARC). Upon binding cytochrome c and dATP, this protein forms an oligomeric apoptosome. The apoptosome binds and cleaves caspase 9 preproprotein, releasing its mature, activated form. Activated caspase 9 stimulates the subsequent caspase cascade that commits the cell to apoptosis. Alternative splicing results in several transcript variants encoding different isoforms.

Synonyms: APAF-1; CED4; DKFZp781B1145; KIAA0413



[View online »](#)

Product images:



Gel: 6%SDS-PAGE
Lysate: 40 μ g
Lane 1-3: 293T cell
Jurkat cell
Hela cell lysates
Primary antibody: TA368640 (APAF1 Antibody) at
dilution 1/800
Secondary antibody: Goat anti rabbit IgG at
1/5000 dilution
Exposure time: 2 minutes