

## Product datasheet for **TA368631S**

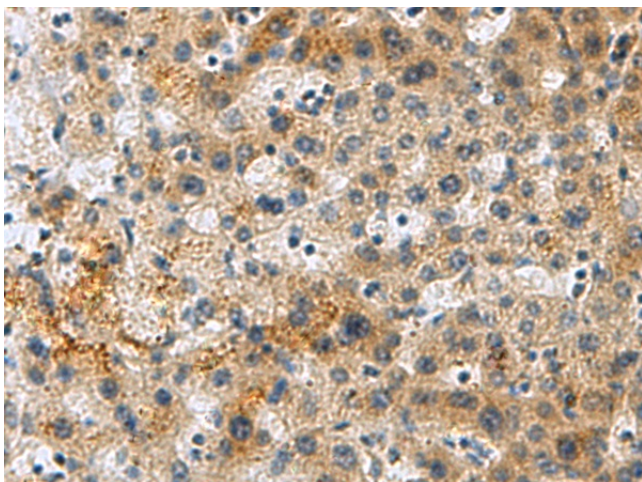
### **KIAA1881 (PLIN4) Rabbit Polyclonal Antibody**

#### **Product data:**

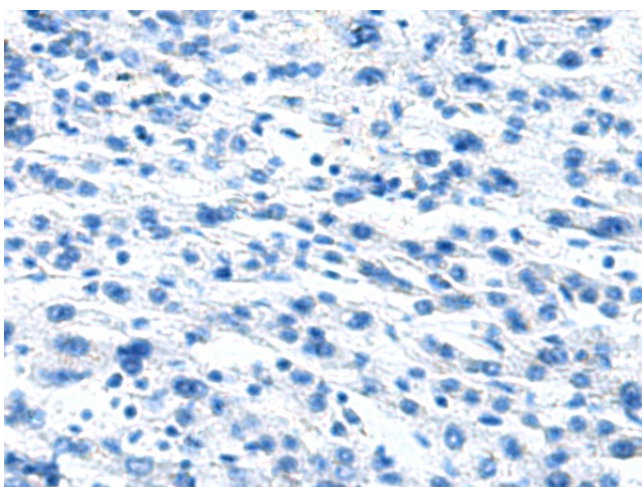
Product Type:	Primary Antibodies
Applications:	IHC
Recommended Dilution:	IHC: 50-200 Positive control: Human liver cancer Predicted cell location: Cell membrane
Reactivity:	Human
Host:	Rabbit
Isotype:	IgG
Clonality:	Polyclonal
Immunogen:	Synthetic peptide of human PLIN4
Formulation:	pH7.4 PBS, 0.05% NaN <sub>3</sub> , 40% Glycerol
Purification:	Antigen affinity purification
Conjugation:	Unconjugated
Storage:	Store at -20°C.
Stability:	1 year
Gene Name:	perilipin 4
Database Link:	<a href="#">Entrez Gene 729359 Human Q96Q06</a>
Background:	Members of the perilipin family, such as PLIN4, coat intracellular lipid storage droplets (Wolins et al., 2003 [PubMed 12840023]). May play a role in triacylglycerol packaging into adipocytes. May function as a coat protein involved in the biogenesis of lipid droplets (By similarity).
Synonyms:	KIAA1881; S3-12



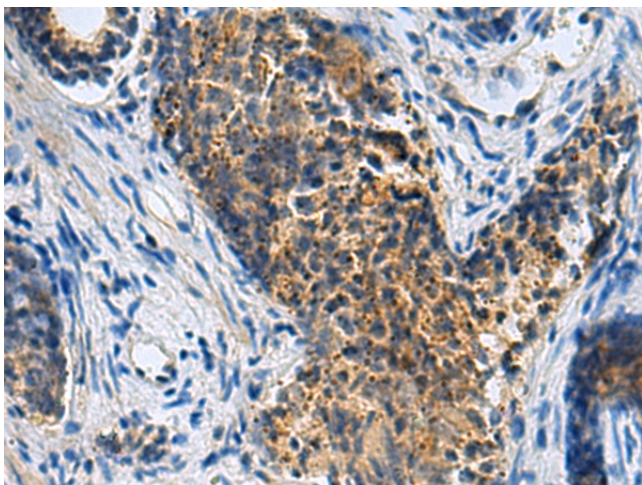
[View online »](#)

**Product images:**

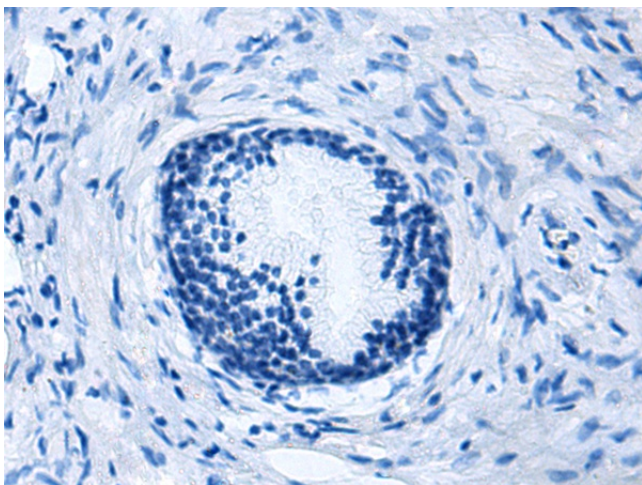
Immunohistochemistry of paraffin-embedded Human liver cancer tissue using [TA368631] (PLIN4 Antibody) at dilution 1/50 (Original magnification: ×200)



Immunohistochemistry of paraffin-embedded Human liver cancer tissue using [TA368631] (PLIN4 Antibody) at dilution 1/50, treated with synthetic peptide. (Original magnification: ×200)



Immunohistochemistry of paraffin-embedded Human prostate cancer tissue using [TA368631] (PLIN4 Antibody) at dilution 1/50 (Original magnification:  $\times 200$ )



Immunohistochemistry of paraffin-embedded Human prostate cancer tissue using [TA368631] (PLIN4 Antibody) at dilution 1/50, treated with synthetic peptide. (Original magnification:  $\times 200$ )