

## Product datasheet for **TA368631**

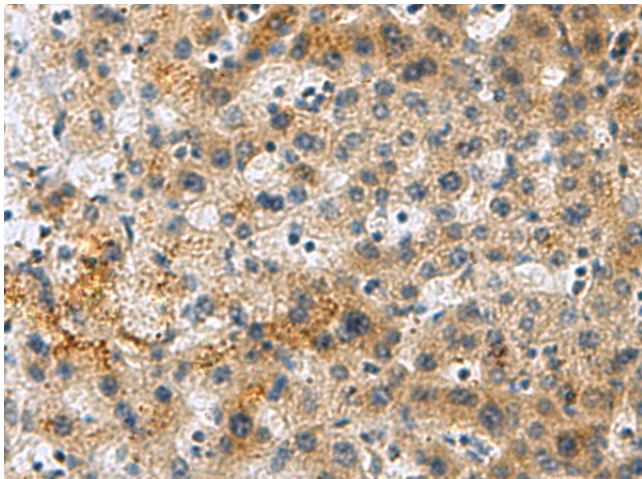
### **KIAA1881 (PLIN4) Rabbit Polyclonal Antibody**

#### **Product data:**

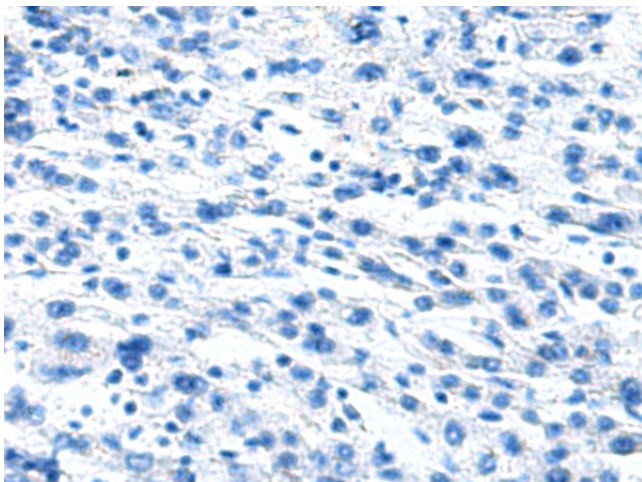
<b>Product Type:</b>	Primary Antibodies
<b>Applications:</b>	IHC
<b>Recommended Dilution:</b>	IHC: 50-200 Positive control: Human liver cancer Predicted cell location: Cell membrane
<b>Reactivity:</b>	Human
<b>Host:</b>	Rabbit
<b>Isotype:</b>	IgG
<b>Clonality:</b>	Polyclonal
<b>Immunogen:</b>	Synthetic peptide of human PLIN4
<b>Formulation:</b>	pH7.4 PBS, 0.05% NaN <sub>3</sub> , 40% Glycerol
<b>Concentration:</b>	lot specific
<b>Purification:</b>	Antigen affinity purification
<b>Conjugation:</b>	Unconjugated
<b>Storage:</b>	Store at -20°C.
<b>Stability:</b>	1 year
<b>Gene Name:</b>	perilipin 4
<b>Database Link:</b>	<a href="#">Entrez Gene 729359 Human Q96Q06</a>
<b>Background:</b>	Members of the perilipin family, such as PLIN4, coat intracellular lipid storage droplets (Wolins et al., 2003 [PubMed 12840023]). May play a role in triacylglycerol packaging into adipocytes. May function as a coat protein involved in the biogenesis of lipid droplets (By similarity).
<b>Synonyms:</b>	KIAA1881; S3-12



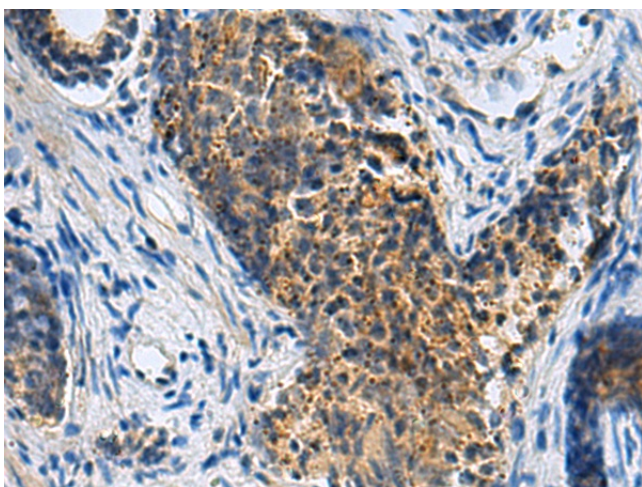
[View online »](#)

**Product images:**

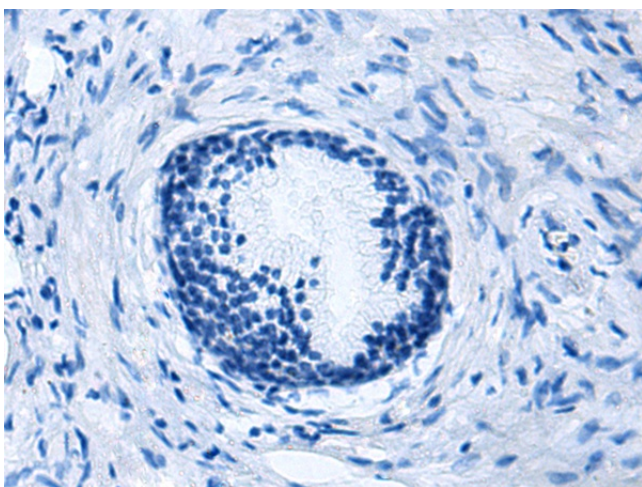
Immunohistochemistry of paraffin-embedded Human liver cancer tissue using TA368631 (PLIN4 Antibody) at dilution 1/50 (Original magnification: ×200)



Immunohistochemistry of paraffin-embedded Human liver cancer tissue using TA368631 (PLIN4 Antibody) at dilution 1/50, treated with synthetic peptide. (Original magnification: ×200)



Immunohistochemistry of paraffin-embedded Human prostate cancer tissue using TA368631 (PLIN4 Antibody) at dilution 1/50 (Original magnification:  $\times 200$ )



Immunohistochemistry of paraffin-embedded Human prostate cancer tissue using TA368631 (PLIN4 Antibody) at dilution 1/50, treated with synthetic peptide. (Original magnification:  $\times 200$ )