

Product datasheet for **TA368626**

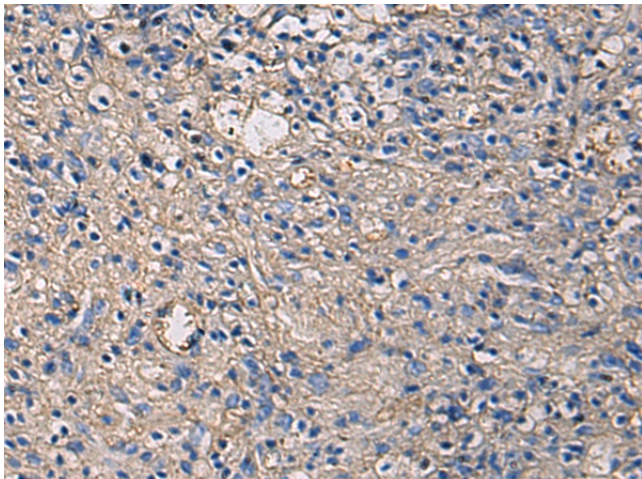
IGHG1 Rabbit Polyclonal Antibody

Product data:

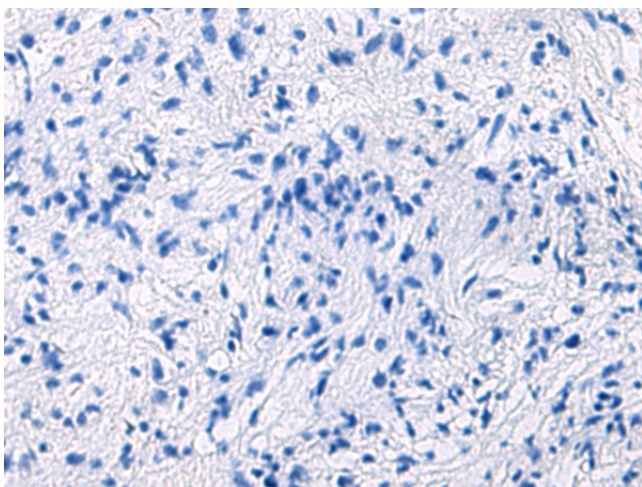
Product Type:	Primary Antibodies
Applications:	IHC
Recommended Dilution:	IHC: 50-200 Positive control: Human brain Predicted cell location: Secreted
Reactivity:	Human
Host:	Rabbit
Isotype:	IgG
Clonality:	Polyclonal
Immunogen:	Synthetic peptide of human IGHG1
Formulation:	pH7.4 PBS, 0.05% NaN ₃ , 40% Glycerol
Concentration:	lot specific
Purification:	Antigen affinity purification
Conjugation:	Unconjugated
Storage:	Store at -20°C.
Stability:	1 year
Gene Name:	immunoglobulin heavy constant gamma 1 (G1m marker)
Database Link:	Entrez Gene 3500 Human P01857
Background:	The function of this protein remains unknown.
Synonyms:	IGHG1



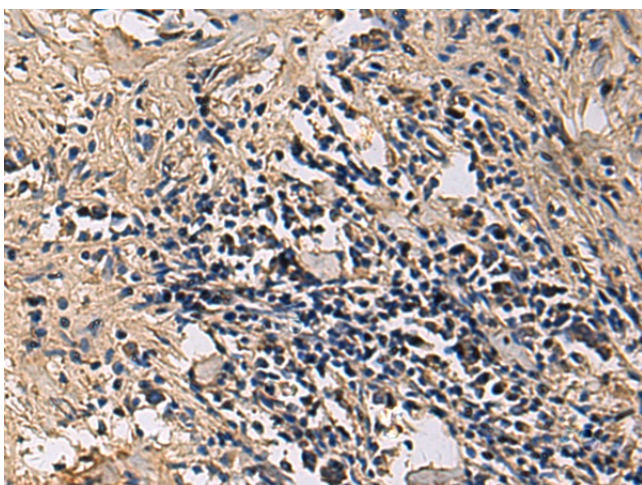
[View online »](#)

Product images:

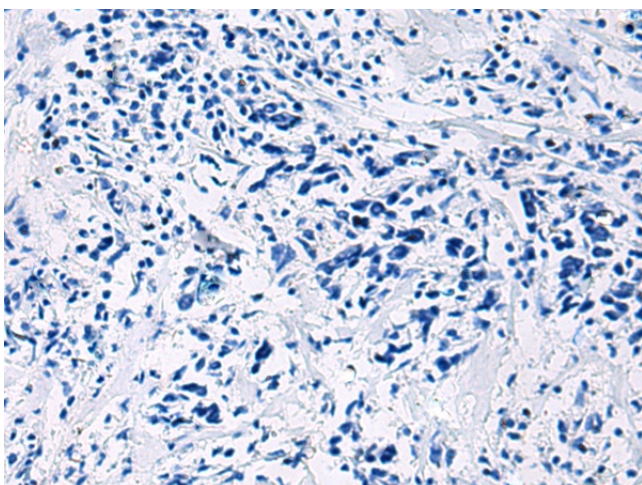
Immunohistochemistry of paraffin-embedded Human brain using TA368626 (IGHG1 Antibody) at dilution 1/60 (Original magnification: ×200)



Immunohistochemistry of paraffin-embedded Human brain using TA368626 (IGHG1 Antibody) at dilution 1/60, treated with synthetic peptide. (Original magnification: ×200)



Immunohistochemistry of paraffin-embedded Human breast cancer using TA368626 (IGHG1 Antibody) at dilution 1/60 (Original magnification: $\times 200$)



Immunohistochemistry of paraffin-embedded Human breast cancer using TA368626 (IGHG1 Antibody) at dilution 1/60, treated with synthetic peptide. (Original magnification: $\times 200$)