

## Product datasheet for **TA368625**

### **KIAA0020 (PUM3) Rabbit Polyclonal Antibody**

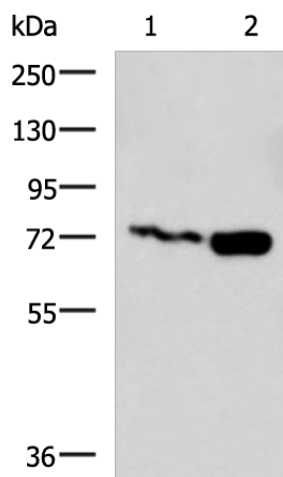
#### **Product data:**

Product Type:	Primary Antibodies
Applications:	WB
Recommended Dilution:	WB: 1000-5000 WB positive control: Jurkat and Raji cell lysates
Reactivity:	Human
Host:	Rabbit
Isotype:	IgG
Clonality:	Polyclonal
Immunogen:	Synthetic peptide of human PUM3
Formulation:	pH7.4 PBS, 0.05% NaN <sub>3</sub> , 40% Glycerol
Concentration:	lot specific
Purification:	Antigen affinity purification
Conjugation:	Unconjugated
Storage:	Store at -20°C.
Stability:	1 year
Predicted Protein Size:	74 kDa
Gene Name:	pumilio RNA binding family member 3
Database Link:	<a href="#">Entrez Gene 9933 Human Q15397</a>
Background:	Inhibits the poly(ADP-ribosyl)ation activity of PARP1 and the degradation of PARP1 by CASP3 following genotoxic stress. Binds to double-stranded RNA or DNA without sequence specificity. Involved in development of the eye and of primordial germ cells.



[View online »](#)

## Product images:



Gel: 8%SDS-PAGE

Lysate: 40  $\mu$ g

Lane 1-2: Jurkat and Raji cell lysates

Primary antibody: TA368625 (PUM3 Antibody) at dilution 1/800

Secondary antibody: Goat anti rabbit IgG at 1/5000 dilution

Exposure time: 1 minute