

Product datasheet for **TA368617S**

Keratin 12 (KRT12) Rabbit Polyclonal Antibody

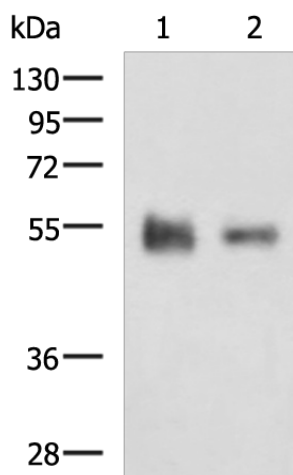
Product data:

Product Type:	Primary Antibodies
Applications:	WB
Recommended Dilution:	WB: 200-1000 WB positive control: Rat eye tissue and Human skin tissue lysates
Reactivity:	Human, Rat
Host:	Rabbit
Isotype:	IgG
Clonality:	Polyclonal
Immunogen:	Synthetic peptide of human KRT12
Formulation:	pH7.4 PBS, 0.05% NaN ₃ , 40% Glycerol
Purification:	Antigen affinity purification
Conjugation:	Unconjugated
Storage:	Store at -20°C.
Stability:	1 year
Predicted Protein Size:	54 kDa
Gene Name:	keratin 12
Database Link:	Entrez Gene 3859 Human Q99456
Background:	KRT12 encodes the type I intermediate filament chain keratin 12, expressed in corneal epithelia. Mutations in this gene lead to Meesmann corneal dystrophy.
Synonyms:	CK-12; Cytokeratin-12; K12; Keratin-12



[View online »](#)

Product images:



Gel: 8%SDS-PAGE

Lysate: 40 µg

Lane 1-2: Rat eye tissue and Human skin tissue lysates

Primary antibody: [TA368617] (KRT12 Antibody) at dilution 1/750

Secondary antibody: Goat anti rabbit IgG at 1/5000 dilution

Exposure time: 10 minutes