

Product datasheet for **TA368617**

Keratin 12 (KRT12) Rabbit Polyclonal Antibody

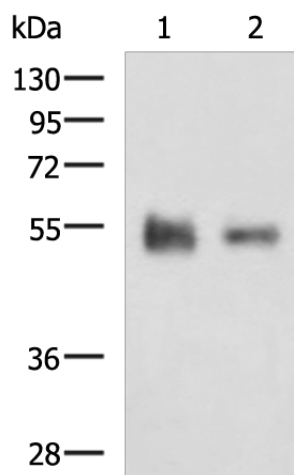
Product data:

| | |
|-------------------------|---|
| Product Type: | Primary Antibodies |
| Applications: | WB |
| Recommended Dilution: | WB: 200-1000 WB positive control: Rat eye tissue and Human skin tissue lysates |
| Reactivity: | Human, Rat |
| Host: | Rabbit |
| Isotype: | IgG |
| Clonality: | Polyclonal |
| Immunogen: | Synthetic peptide of human KRT12 |
| Formulation: | pH7.4 PBS, 0.05% NaN ₃ , 40% Glycerol |
| Concentration: | lot specific |
| Purification: | Antigen affinity purification |
| Conjugation: | Unconjugated |
| Storage: | Store at -20°C. |
| Stability: | 1 year |
| Predicted Protein Size: | 54 kDa |
| Gene Name: | keratin 12 |
| Database Link: | Entrez Gene 3859 Human Q99456 |
| Background: | KRT12 encodes the type I intermediate filament chain keratin 12, expressed in corneal epithelia. Mutations in this gene lead to Meesmann corneal dystrophy. |
| Synonyms: | CK-12; Cytokeratin-12; K12; Keratin-12 |



[View online »](#)

Product images:



Gel: 8%SDS-PAGE

Lysate: 40 μ g

Lane 1-2: Rat eye tissue and Human skin tissue lysates

Primary antibody: TA368617 (KRT12 Antibody) at dilution 1/750

Secondary antibody: Goat anti rabbit IgG at 1/5000 dilution

Exposure time: 10 minutes