

Product datasheet for **TA368607**

KCNK18 Rabbit Polyclonal Antibody

Product data:

Product Type:	Primary Antibodies
Applications:	IHC, WB
Recommended Dilution:	WB: 500-2000 WB positive control: TM4 cell lysate IHC: 70-350 Positive control: Human liver cancer Predicted cell location: Cytoplasm
Reactivity:	Human, Mouse
Host:	Rabbit
Isotype:	IgG
Clonality:	Polyclonal
Immunogen:	Synthetic peptide of human KCNK18
Formulation:	pH7.4 PBS, 0.05% NaN ₃ , 40% Glycerol
Concentration:	lot specific
Purification:	Antigen affinity purification
Conjugation:	Unconjugated
Storage:	Store at -20°C.
Stability:	1 year
Predicted Protein Size:	44 kDa
Gene Name:	potassium two pore domain channel subfamily K member 18
Database Link:	Entrez Gene 338567 Human Q7Z418

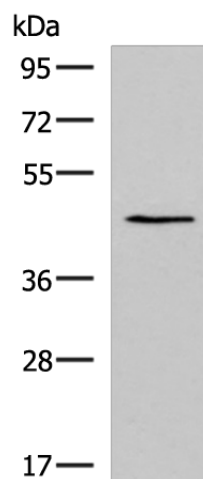
Background: Potassium channels play a role in many cellular processes including maintenance of the action potential, muscle contraction, hormone secretion, osmotic regulation, and ion flow. This gene encodes a member of the superfamily of potassium channel proteins containing two pore-forming P domains and the encoded protein functions as an outward rectifying potassium channel. A mutation in this gene has been found to be associated with migraine with aura.



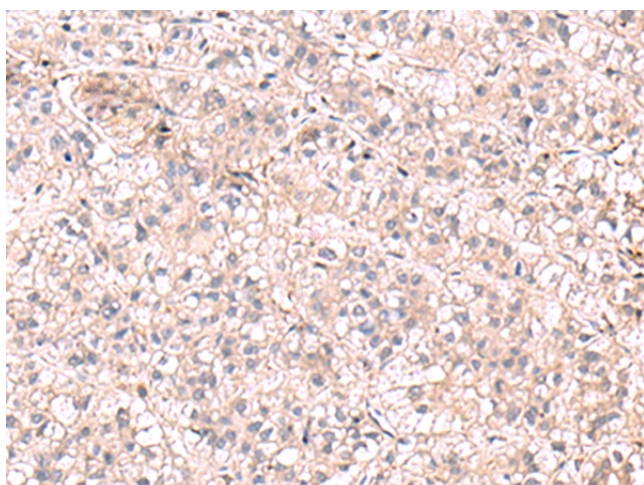
[View online »](#)

Synonyms: K2p18.1; TRESK; TRESK-2; TRESK2; TRIK

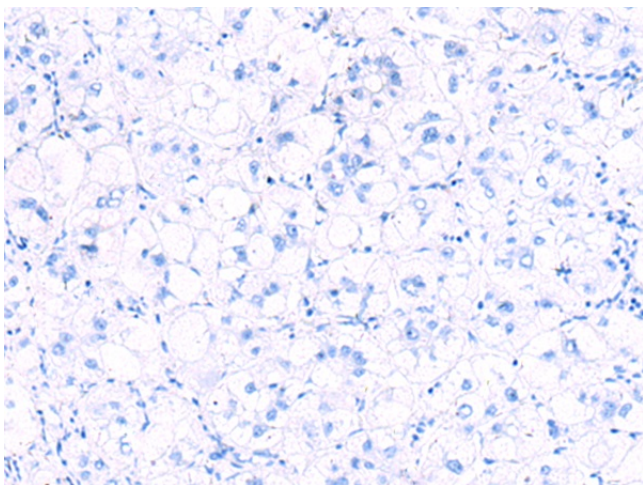
Product images:



Gel: 8%SDS-PAGE
Lysate: 40 μ g
Lane: TM4 cell lysate
Primary antibody: TA368607 (KCNK18 Antibody) at dilution 1/800
Secondary antibody: Goat anti rabbit IgG at 1/5000 dilution
Exposure time: 1 minute



Immunohistochemistry of paraffin-embedded Human liver cancer tissue using TA368607 (KCNK18 Antibody) at dilution 1/75 (Original magnification: \times 200)



Immunohistochemistry of paraffin-embedded Human liver cancer tissue using TA368607 (KCNK18 Antibody) at dilution 1/75, treated with synthetic peptide. (Original magnification: $\times 200$)