

Product datasheet for **TA368606**

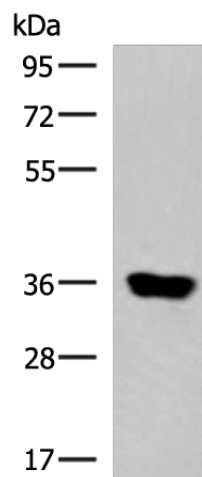
KCNK15 Rabbit Polyclonal Antibody

Product data:

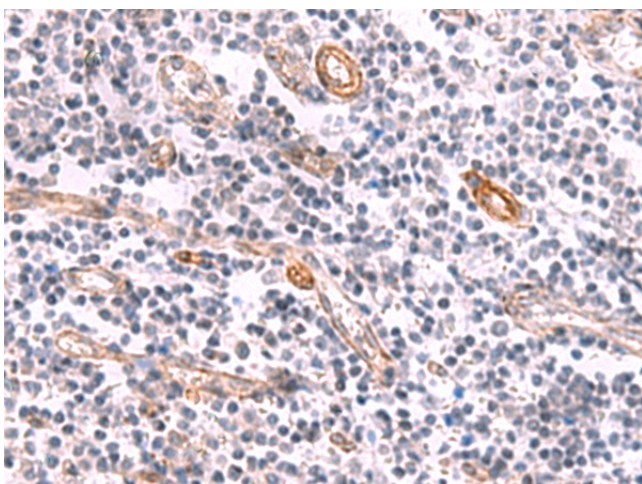
Product Type:	Primary Antibodies
Applications:	IHC, WB
Recommended Dilution:	WB: 1000-5000 WB positive control: Human muscle tissue lysate IHC: 25-100 Positive control: Human tonsil Predicted cell location: Cytoplasm
Reactivity:	Human
Host:	Rabbit
Isotype:	IgG
Clonality:	Polyclonal
Immunogen:	Synthetic peptide of human KCNK15
Formulation:	pH7.4 PBS, 0.05% NaN ₃ , 40% Glycerol
Concentration:	lot specific
Purification:	Antigen affinity purification
Conjugation:	Unconjugated
Storage:	Store at -20°C.
Stability:	1 year
Predicted Protein Size:	36 kDa
Gene Name:	potassium two pore domain channel subfamily K member 15
Database Link:	Entrez Gene 60598 Human Q9H427
Background:	This gene encodes one of the members of the superfamily of potassium channel proteins containing two pore-forming P domains. The product of this gene has not been shown to be a functional channel, however, it may require other non-pore-forming proteins for activity.
Synonyms:	dj781B1.1; K2p15.1; KCNK11; KCNK14; KIAA0237; KT3.3; TASK-5; TASK5



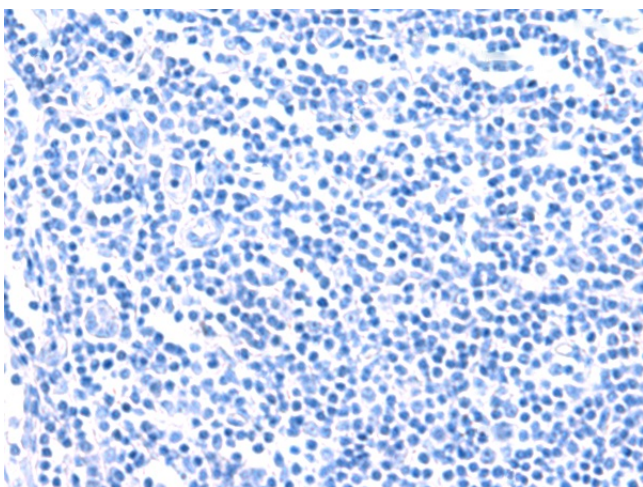
[View online »](#)

Product images:

Gel: 8%SDS-PAGE
Lysate: 40 μ g
Lane: Human muscle tissue lysate
Primary antibody: TA368606 (KCNK15 Antibody)
at dilution 1/1000
Secondary antibody: Goat anti rabbit IgG at
1/5000 dilution
Exposure time: 40 seconds



Immunohistochemistry of paraffin-embedded
Human tonsil tissue using TA368606 (KCNK15
Antibody) at dilution 1/45 (Original magnification:
 \times 200)



Immunohistochemistry of paraffin-embedded Human tonsil tissue using TA368606 (KCNK15 Antibody) at dilution 1/45, treated with synthetic peptide. (Original magnification: x200)