

## Product datasheet for **TA368601**

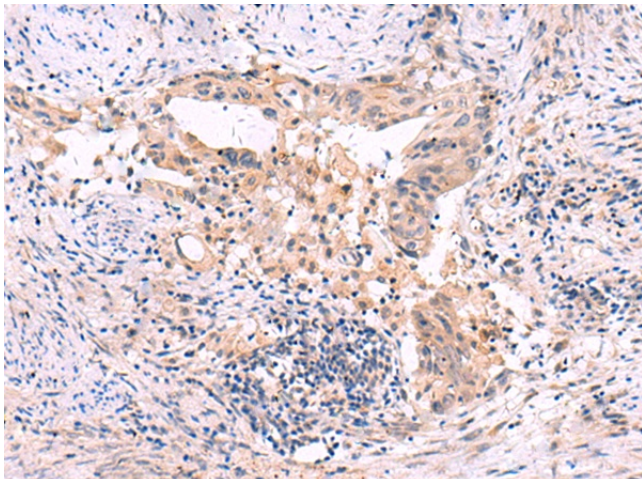
### **KCC2 (SLC12A5) Rabbit Polyclonal Antibody**

#### **Product data:**

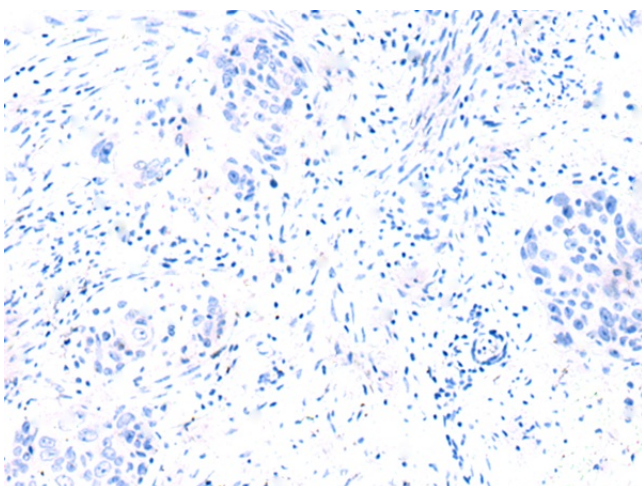
<b>Product Type:</b>	Primary Antibodies
<b>Applications:</b>	IHC
<b>Recommended Dilution:</b>	IHC: 30-150 Positive control: Human cervical cancer Predicted cell location: Cytoplasm
<b>Reactivity:</b>	Human, Mouse, Rat
<b>Host:</b>	Rabbit
<b>Isotype:</b>	IgG
<b>Clonality:</b>	Polyclonal
<b>Immunogen:</b>	Synthetic peptide of human SLC12A5
<b>Formulation:</b>	pH7.4 PBS, 0.05% NaN <sub>3</sub> , 40% Glycerol
<b>Concentration:</b>	lot specific
<b>Purification:</b>	Antigen affinity purification
<b>Conjugation:</b>	Unconjugated
<b>Storage:</b>	Store at -20°C.
<b>Stability:</b>	1 year
<b>Gene Name:</b>	solute carrier family 12 member 5
<b>Database Link:</b>	<a href="#">Entrez Gene 57468 Human Q9H2X9</a>
<b>Background:</b>	K-Cl cotransporters are proteins that lower intracellular chloride concentrations below the electrochemical equilibrium potential. The protein encoded by this gene is an integral membrane K-Cl cotransporter that can function in either a net efflux or influx pathway, depending on the chemical concentration gradients of potassium and chloride. The encoded protein can act as a homomultimer, or as a heteromultimer with other K-Cl cotransporters, to maintain chloride homeostasis in neurons. Alternative splicing results in two transcript variants encoding different isoforms.
<b>Synonyms:</b>	hKCC2; KCC2; KIAA1176



[View online »](#)

**Product images:**

Immunohistochemistry of paraffin-embedded Human cervical cancer tissue using TA368601 (SLC12A5 Antibody) at dilution 1/40 (Original magnification:  $\times 200$ )



Immunohistochemistry of paraffin-embedded Human cervical cancer tissue using TA368601 (SLC12A5 Antibody) at dilution 1/40, treated with synthetic peptide. (Original magnification:  $\times 200$ )