

## Product datasheet for **TA368600S**

### **KBTBD11 Rabbit Polyclonal Antibody**

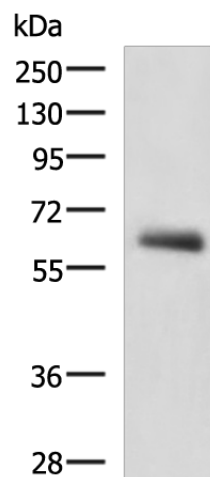
#### **Product data:**

Product Type:	Primary Antibodies
Applications:	WB
Recommended Dilution:	WB: 1000-5000 WB positive control: Human metastatic papillary carcinoma(thyroid cancer) tissue lysate
Reactivity:	Human, Mouse
Host:	Rabbit
Isotype:	IgG
Clonality:	Polyclonal
Immunogen:	Synthetic peptide of human KBTBD11
Formulation:	pH7.4 PBS, 0.05% NaN <sub>3</sub> , 40% Glycerol
Purification:	Antigen affinity purification
Conjugation:	Unconjugated
Storage:	Store at -20°C.
Stability:	1 year
Predicted Protein Size:	66 kDa
Gene Name:	kelch repeat and BTB domain containing 11
Database Link:	<a href="#">Entrez Gene 9920 Human O94819</a>
Background:	The function of this protein remains unknown.
Synonyms:	KIAA0711; KLHDC7C



[View online »](#)

## Product images:



Gel: 8%SDS-PAGE  
Lysate: 40  $\mu$ g  
Lane: Human metastatic papillary carcinoma(thyroid cancer) tissue lysate  
Primary antibody: [TA368600] (KBTBD11 Antibody) at dilution 1/2300  
Secondary antibody: Goat anti rabbit IgG at 1/5000 dilution  
Exposure time: 2 minutes