

## Product datasheet for **TA368596**

### **KAP1 (TRIM28) Rabbit Polyclonal Antibody**

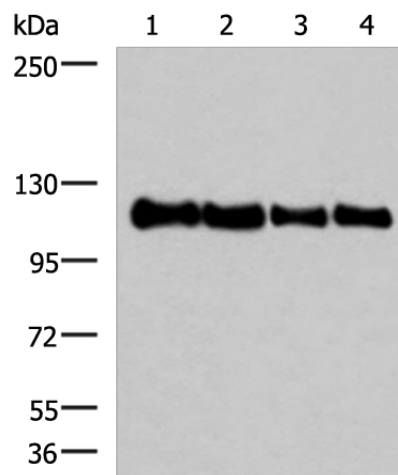
#### **Product data:**

Product Type:	Primary Antibodies
Applications:	IHC, WB
Recommended Dilution:	WB: 1000-5000 WB positive control: 293T, HEPG2, Hela and TM4 cell lysates IHC: 50-300 Positive control: Human ovarian cancer Predicted cell location: Nucleus
Reactivity:	Human, Mouse, Rat
Host:	Rabbit
Isotype:	IgG
Clonality:	Polyclonal
Immunogen:	Synthetic peptide of human TRIM28(phospho-Ser824)
Formulation:	pH7.4 PBS, 0.05% NaN <sub>3</sub> , 40% Glycerol
Concentration:	lot specific
Purification:	Antigen affinity purification
Conjugation:	Unconjugated
Storage:	Store at -20°C.
Stability:	1 year
Predicted Protein Size:	89 kDa
Gene Name:	tripartite motif containing 28
Database Link:	<a href="#">Entrez Gene 10155 Human Q13263</a>
Background:	The protein encoded by this gene mediates transcriptional control by interaction with the Kruppel-associated box repression domain found in many transcription factors. The protein localizes to the nucleus and is thought to associate with specific chromatin regions. The protein is a member of the tripartite motif family. This tripartite motif includes three zinc-binding domains, a RING, a B-box type 1 and a B-box type 2, and a coiled-coil region.
Synonyms:	FLJ29029; KAP-1; KAP1; KRIP-1; RNF96; TF1B; TIF1-beta; TIF1B



[View online »](#)

## Product images:



Gel: 6%SDS-PAGE

Lysate: 40  $\mu$ g

Lane 1-4: 293T

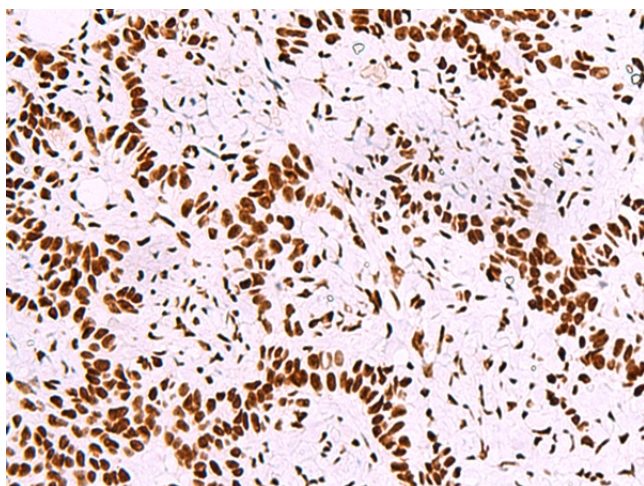
HEPG2

Hela and TM4 cell lysates

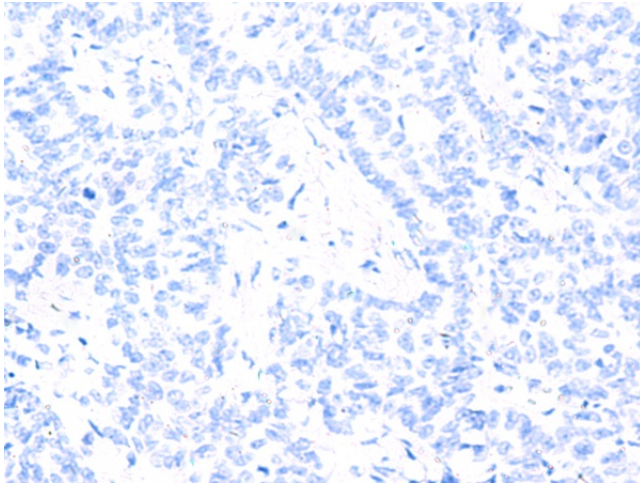
Primary antibody: TA368596 (TRIM28(phospho-Ser824) Antibody) at dilution 1/1000

Secondary antibody: Goat anti rabbit IgG at 1/5000 dilution

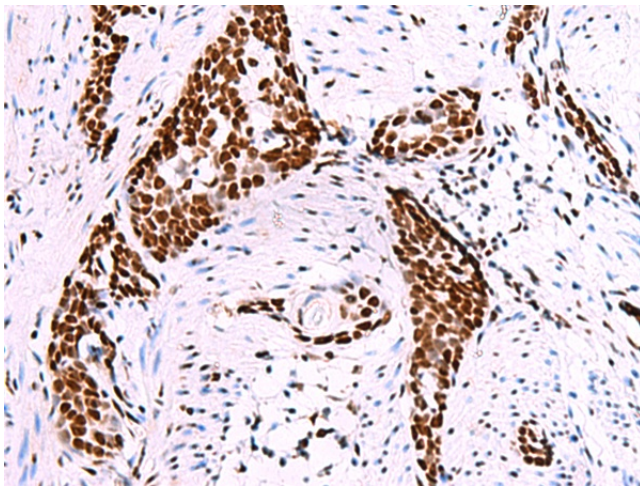
Exposure time: 20 seconds



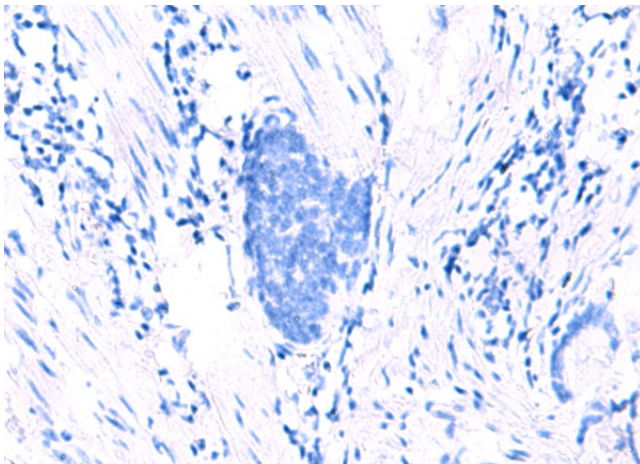
Immunohistochemistry of paraffin-embedded Human ovarian cancer tissue using TA368596 (TRIM28(phospho-Ser824) Antibody) at dilution 1/50 (Original magnification:  $\times 200$ )



Immunohistochemistry of paraffin-embedded Human ovarian cancer tissue using TA368596 (TRIM28(phospho-Ser824) Antibody) at dilution 1/50, treated with synthetic peptide. (Original magnification:  $\times 200$ )



Immunohistochemistry of paraffin-embedded Human esophagus cancer tissue using TA368596 (TRIM28(phospho-Ser824) Antibody) at dilution 1/50 (Original magnification:  $\times 200$ )



Immunohistochemistry of paraffin-embedded Human esophagus cancer tissue using TA368596 (TRIM28(phospho-Ser824) Antibody) at dilution 1/50, treated with synthetic peptide. (Original magnification:  $\times 200$ )