

Product datasheet for **TA368595**

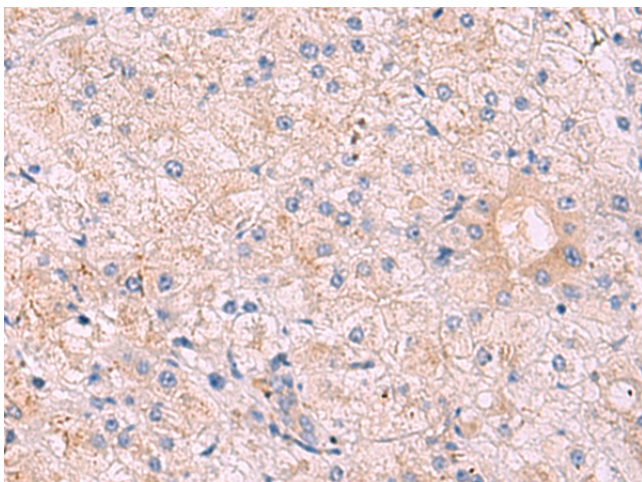
KANSL1L Rabbit Polyclonal Antibody

Product data:

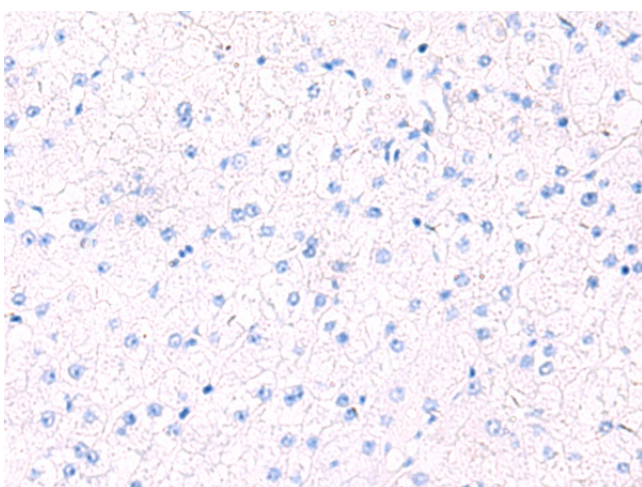
Product Type:	Primary Antibodies
Applications:	IHC
Recommended Dilution:	IHC: 30-150 Positive control: Human tonsil Predicted cell location: Cytoplasm
Reactivity:	Human
Host:	Rabbit
Isotype:	IgG
Clonality:	Polyclonal
Immunogen:	Synthetic peptide of human KANSL1L
Formulation:	pH7.4 PBS, 0.05% NaN ₃ , 40% Glycerol
Concentration:	lot specific
Purification:	Antigen affinity purification
Conjugation:	Unconjugated
Storage:	Store at -20°C.
Stability:	1 year
Gene Name:	KAT8 regulatory NSL complex subunit 1 like
Database Link:	Entrez Gene 151050 Human A0AUZ9
Background:	The function of this protein remains unknown.
Synonyms:	C2orf67; MSL1v2



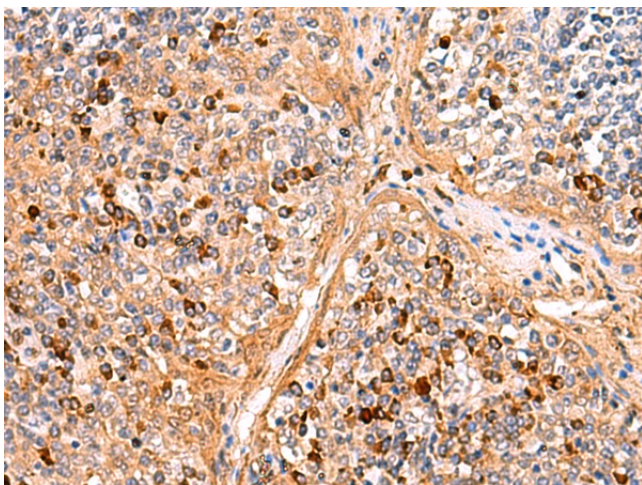
[View online »](#)

Product images:


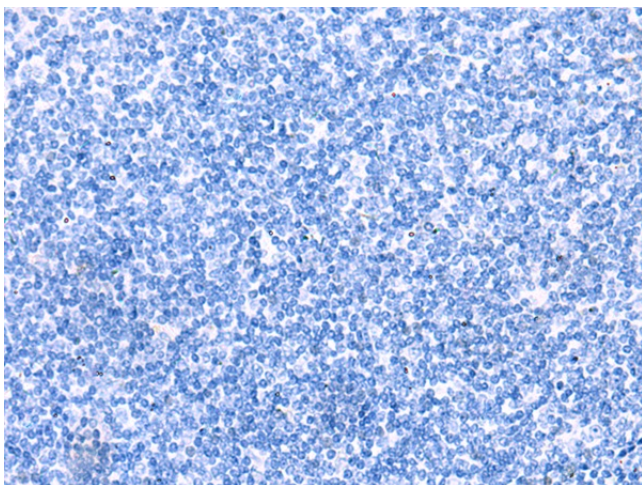
Immunohistochemistry of paraffin-embedded Human tonsil tissue using TA368595 (KANSL1L Antibody) at dilution 1/40 (Original magnification: ×200)



Immunohistochemistry of paraffin-embedded Human tonsil tissue using TA368595 (KANSL1L Antibody) at dilution 1/40, treated with synthetic peptide. (Original magnification: ×200)



Immunohistochemistry of paraffin-embedded Human liver cancer tissue using TA368595 (KANSL1L Antibody) at dilution 1/40 (Original magnification: ×200)



Immunohistochemistry of paraffin-embedded Human liver cancer tissue using TA368595 (KANSL1L Antibody) at dilution 1/40, treated with synthetic peptide. (Original magnification: ×200)