

## Product datasheet for **TA368594**

### Interferon alpha (IFNA13) Rabbit Polyclonal Antibody

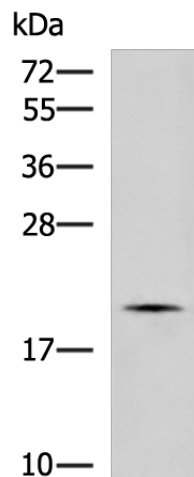
#### Product data:

Product Type:	Primary Antibodies
Applications:	IHC, WB
Recommended Dilution:	WB: 200-1000 WB positive control: Mouse liver tissue lysate IHC: 30-150 Positive control: Human tonsil Predicted cell location: Cytoplasm
Reactivity:	Human, Mouse
Host:	Rabbit
Isotype:	IgG
Clonality:	Polyclonal
Immunogen:	Synthetic peptide of human IFNA1/IFNA13
Formulation:	pH7.4 PBS, 0.05% NaN <sub>3</sub> , 40% Glycerol
Concentration:	lot specific
Purification:	Antigen affinity purification
Conjugation:	Unconjugated
Storage:	Store at -20°C.
Stability:	1 year
Predicted Protein Size:	22 kDa
Gene Name:	interferon, alpha 13
Database Link:	<a href="#">Entrez Gene 3447 Human P01562</a>
Background:	Produced by macrophages, IFN-alpha have antiviral activities. Interferon stimulates the production of two enzymes: a protein kinase and an oligoadenylate synthetase.
Synonyms:	IFNA13

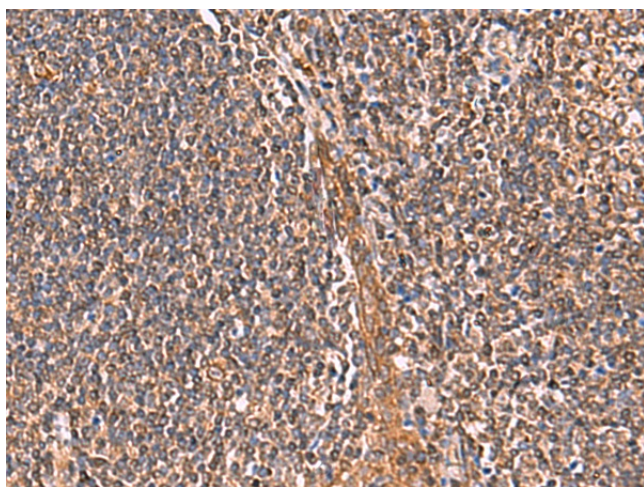


[View online »](#)

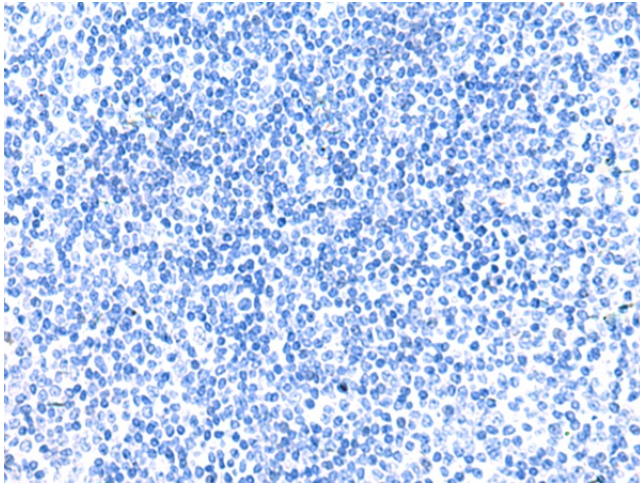
## Product images:



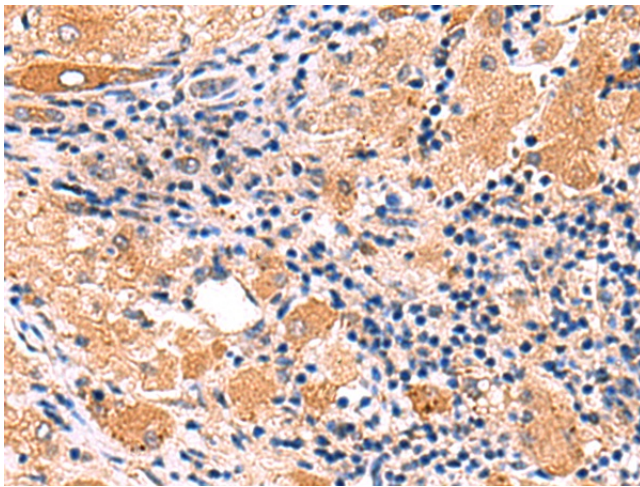
Gel: 12%SDS-PAGE  
Lysate: 40  $\mu$ g  
Lane: Mouse liver tissue lysate  
Primary antibody: TA368594 (IFNA1/IFNA13 Antibody) at dilution 1/400  
Secondary antibody: Goat anti rabbit IgG at 1/5000 dilution  
Exposure time: 1 minute



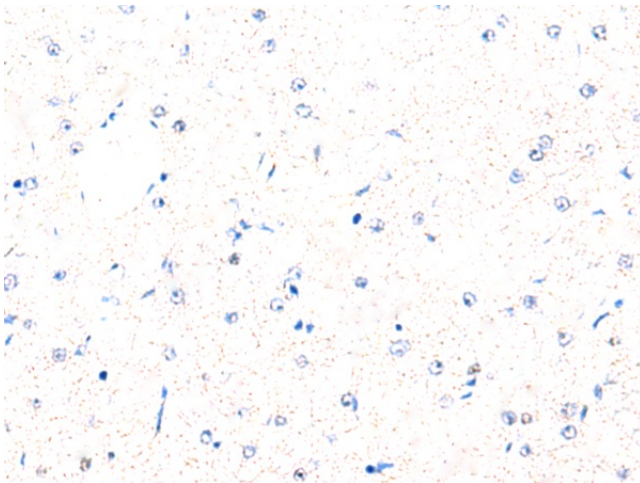
Immunohistochemistry of paraffin-embedded Human tonsil tissue using TA368594 (IFNA1/IFNA13 Antibody) at dilution 1/35 (Original magnification:  $\times$ 200)



Immunohistochemistry of paraffin-embedded Human tonsil tissue using TA368594 (IFNA1/IFNA13 Antibody) at dilution 1/35, treated with synthetic peptide. (Original magnification: ×200)



Immunohistochemistry of paraffin-embedded Human liver cancer tissue using TA368594 (IFNA1/IFNA13 Antibody) at dilution 1/35 (Original magnification: ×200)



Immunohistochemistry of paraffin-embedded Human liver cancer tissue using TA368594 (IFNA1/IFNA13 Antibody) at dilution 1/35, treated with synthetic peptide. (Original magnification: ×200)