

## Product datasheet for **TA368587**

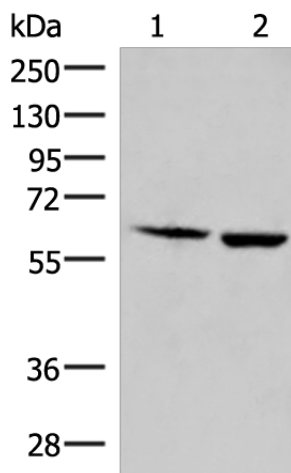
### JRKL Rabbit Polyclonal Antibody

#### Product data:

Product Type:	Primary Antibodies
Applications:	WB
Recommended Dilution:	WB: 1000-5000 WB positive control: Juakat and K562 cell lysates
Reactivity:	Human, Mouse
Host:	Rabbit
Isotype:	IgG
Clonality:	Polyclonal
Immunogen:	Synthetic peptide of human JRKL
Formulation:	pH7.4 PBS, 0.05% NaN <sub>3</sub> , 40% Glycerol
Concentration:	lot specific
Purification:	Antigen affinity purification
Conjugation:	Unconjugated
Storage:	Store at -20°C.
Stability:	1 year
Predicted Protein Size:	60 kDa
Gene Name:	JRK-like
Database Link:	<a href="#">Entrez Gene 8690 Human Q9Y4A0</a>
Background:	The function of this gene has not yet been defined, however, the encoded protein shares similarity with the human (41% identical) and mouse (34% identical) jerky gene products. This protein may act as a nuclear regulatory protein. Alternatively spliced transcript variants have been found for this gene.
Synonyms:	HHMJG; MGC129608; OTTHUMP00000207000



[View online »](#)

**Product images:**


Gel: 8%SDS-PAGE

Lysate: 40 µg

Lane 1-2: Juakat and K562 cell lysates

Primary antibody: TA368587 (JRKL Antibody) at dilution 1/800

Secondary antibody: Goat anti rabbit IgG at 1/5000 dilution

Exposure time: 20 seconds