

Product datasheet for **TA368583**

PEAMT (PEMT) Rabbit Polyclonal Antibody

Product data:

Product Type:	Primary Antibodies
Applications:	IHC, WB
Recommended Dilution:	WB: 1000-5000 WB positive control: Mouse liver tissue, HepG2, 293T and 231 cell lysates IHC: 50-300 Positive control: Human colorectal cancer Predicted cell location: Cytoplasm
Reactivity:	Human, Mouse
Host:	Rabbit
Isotype:	IgG
Clonality:	Polyclonal
Immunogen:	Synthetic peptide of human PEMT
Formulation:	pH7.4 PBS, 0.05% NaN ₃ , 40% Glycerol
Concentration:	lot specific
Purification:	Antigen affinity purification
Conjugation:	Unconjugated
Storage:	Store at -20°C.
Stability:	1 year
Predicted Protein Size:	22 kDa
Gene Name:	phosphatidylethanolamine N-methyltransferase
Database Link:	Entrez Gene 10400 Human Q9UBM1



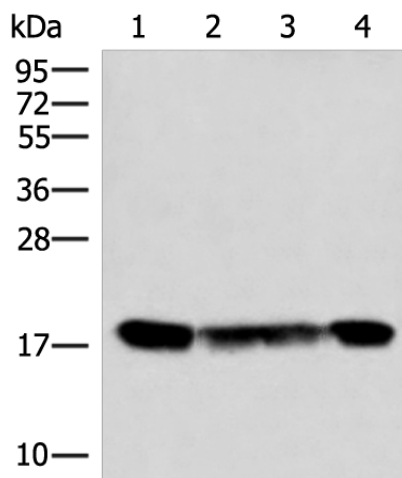
[View online »](#)

Background:

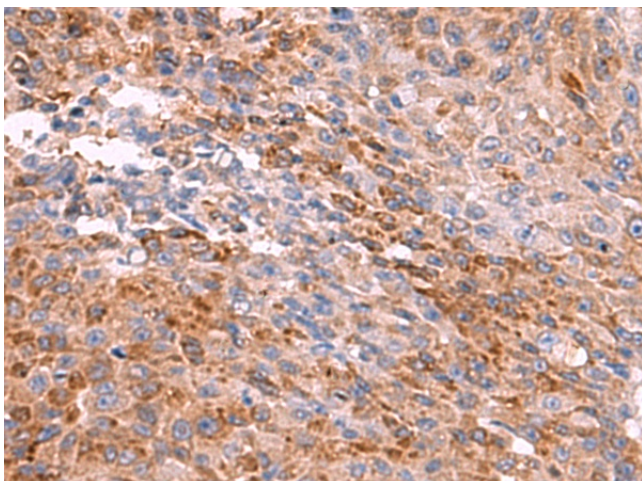
Phosphatidylcholine (PC) is the most abundant mammalian phospholipid. This gene encodes an enzyme which converts phosphatidylethanolamine to phosphatidylcholine by sequential methylation in the liver. Another distinct synthetic pathway in nucleated cells converts intracellular choline to phosphatidylcholine by a three-step process. The protein isoforms encoded by this gene localize to the endoplasmic reticulum and mitochondria-associated membranes. Alternate splicing of this gene results in multiple transcript variants encoding different isoforms.

Synonyms:

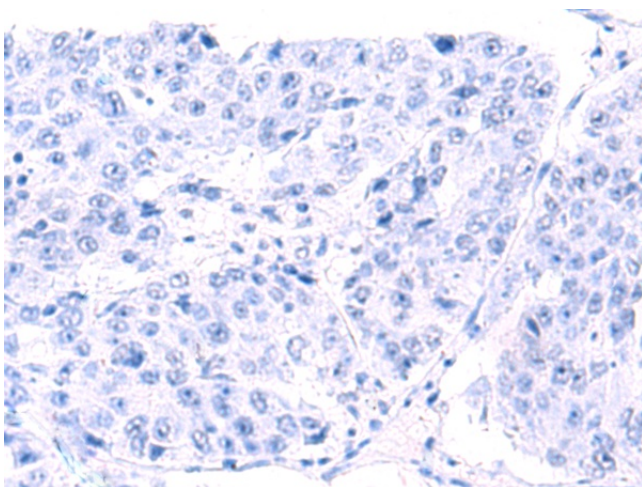
MGC2483; OTTHUMP00000065537; PEAMT; PEMPT; PEMT2; PNMT

Product images:


Gel: 12%SDS-PAGE
 Lysate: 40 µg
 Lane 1-4: Mouse liver tissue
 HepG2
 293T and 231 cell lysates
 Primary antibody: TA368583 (PEMT Antibody) at dilution 1/800
 Secondary antibody: Goat anti rabbit IgG at 1/5000 dilution
 Exposure time: 1 second



Immunohistochemistry of paraffin-embedded Human colorectal cancer tissue using TA368583 (PEMT Antibody) at dilution 1/55 (Original magnification: ×200)



Immunohistochemistry of paraffin-embedded Human colorectal cancer tissue using TA368583 (PEMT Antibody) at dilution 1/55, treated with synthetic peptide. (Original magnification: ×200)