

Product datasheet for **TA368582**

JPH1 Rabbit Polyclonal Antibody

Product data:

Product Type:	Primary Antibodies
Applications:	IHC, WB
Recommended Dilution:	WB: 1000-5000 WB positive control: Mouse heart tissue and Mouse skeletal muscle tissue lysates IHC: 30-150 Positive control: Human liver cancer Predicted cell location: Cytoplasm
Reactivity:	Human, Mouse
Host:	Rabbit
Isotype:	IgG
Clonality:	Polyclonal
Immunogen:	Synthetic peptide of human JPH1
Formulation:	pH7.4 PBS, 0.05% NaN ₃ , 40% Glycerol
Concentration:	lot specific
Purification:	Antigen affinity purification
Conjugation:	Unconjugated
Storage:	Store at -20°C.
Stability:	1 year
Predicted Protein Size:	72 kDa
Gene Name:	junctophilin 1
Database Link:	Entrez Gene 56704 Human Q9HDC5



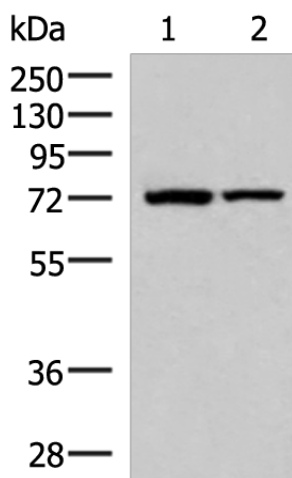
[View online »](#)

Background:

Junctional complexes between the plasma membrane and endoplasmic/sarcoplasmic reticulum are a common feature of all excitable cell types and mediate cross talk between cell surface and intracellular ion channels. The protein encoded by this gene is a component of junctional complexes and is composed of a C-terminal hydrophobic segment spanning the endoplasmic/sarcoplasmic reticulum membrane and a remaining cytoplasmic domain that shows specific affinity for the plasma membrane. This gene is a member of the junctophilin gene family.

Synonyms:

DKFZp762L0313; JP-1; JP1; mitsugumin72

Product images:


Gel: 8%SDS-PAGE

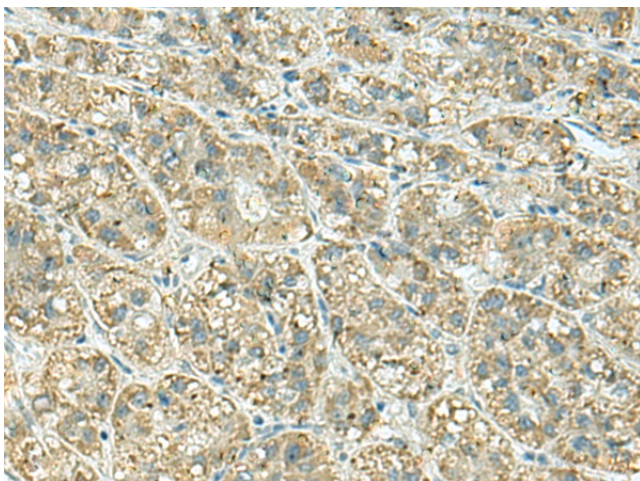
Lysate: 40 µg

Lane 1-2: Mouse heart tissue and Mouse skeletal muscle tissue lysates

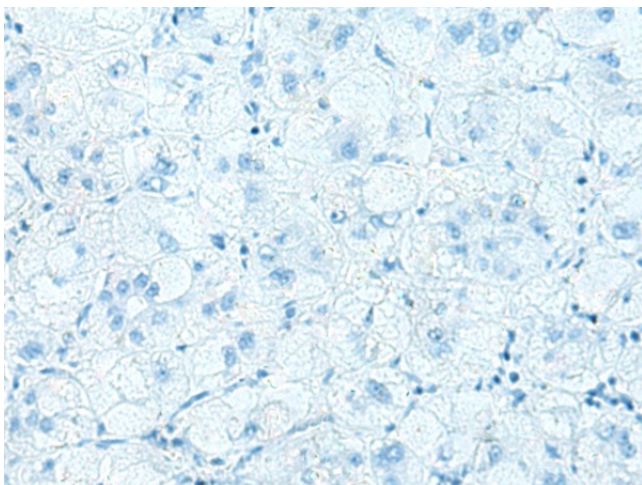
Primary antibody: TA368582 (JPH1 Antibody) at dilution 1/800

Secondary antibody: Goat anti rabbit IgG at 1/5000 dilution

Exposure time: 10 seconds



Immunohistochemistry of paraffin-embedded Human liver cancer tissue using TA368582 (JPH1 Antibody) at dilution 1/30 (Original magnification: ×200)



Immunohistochemistry of paraffin-embedded Human liver cancer tissue using TA368582 (JPH1 Antibody) at dilution 1/30, treated with synthetic peptide. (Original magnification: ×200)