

## Product datasheet for **TA368574**

### ISY1-RAB43 Rabbit Polyclonal Antibody

#### Product data:

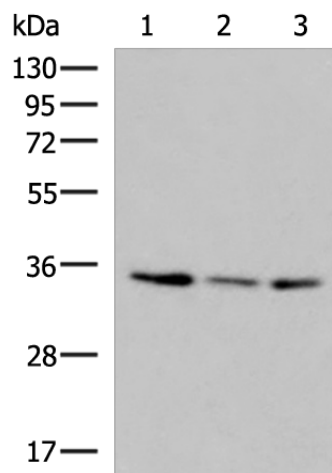
Product Type:	Primary Antibodies
Applications:	IHC, WB
Recommended Dilution:	WB: 1000-5000 WB positive control: HepG2, HL60 cell, Human fetal liver tissue lysates IHC: 50-300 Positive control: Human esophagus cancer Predicted cell location: Nucleus
Reactivity:	Human, Mouse, Rat
Host:	Rabbit
Isotype:	IgG
Clonality:	Polyclonal
Immunogen:	Synthetic peptide of human ISY1-RAB43
Formulation:	pH7.4 PBS, 0.05% NaN <sub>3</sub> , 40% Glycerol
Concentration:	lot specific
Purification:	Antigen affinity purification
Conjugation:	Unconjugated
Storage:	Store at -20°C.
Stability:	1 year
Predicted Protein Size:	33 kDa
Gene Name:	ISY1-RAB43 readthrough
Database Link:	<a href="#">Entrez Gene 100534599 Human Q9ULR0</a>

**Background:** This locus represents naturally occurring read-through transcription between the neighboring ISY1 (ISY1 splicing factor homolog) and RAB43 (RAB43, member RAS oncogene family) gene on chromosome 3. The read-through transcript encodes a protein that shares sequence identity with the upstream gene product, but its C-terminus is distinct due to a frameshift relative to the downstream gene.

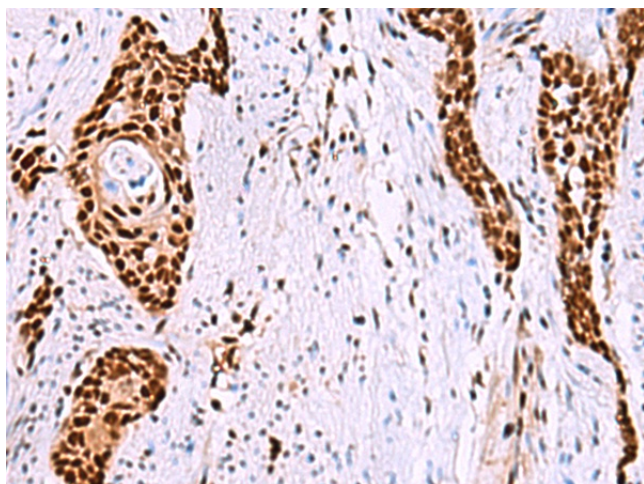


[View online »](#)

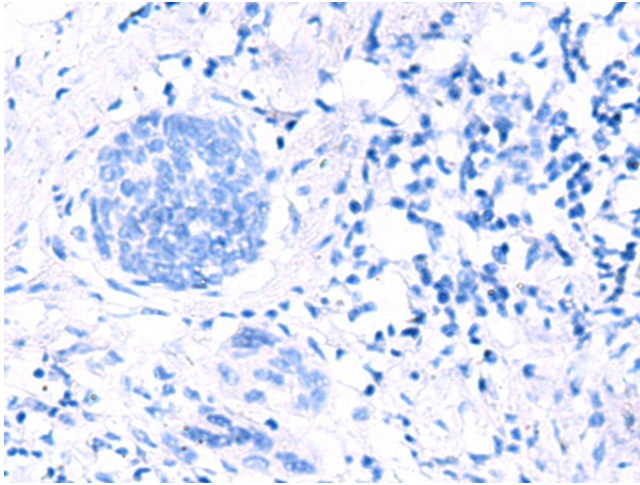
## Product images:



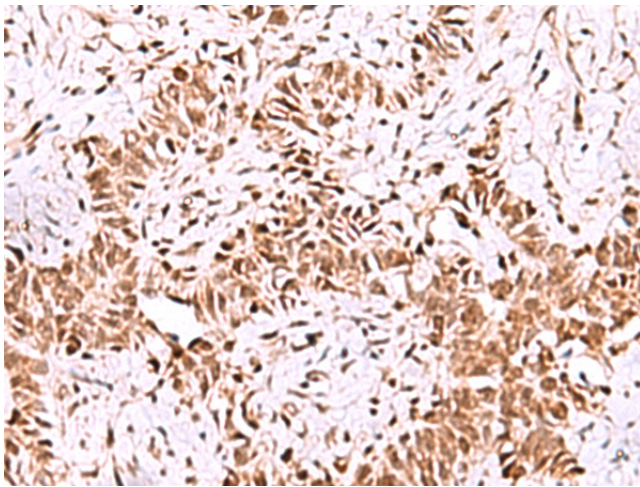
Gel: 8%SDS-PAGE  
Lysate: 40  $\mu$ g  
Lane 1-3: HepG2  
HL60 cell  
Human fetal liver tissue lysates  
Primary antibody: TA368574 (ISY1-RAB43  
Antibody) at dilution 1/1000  
Secondary antibody: Goat anti rabbit IgG at  
1/5000 dilution  
Exposure time: 10 seconds



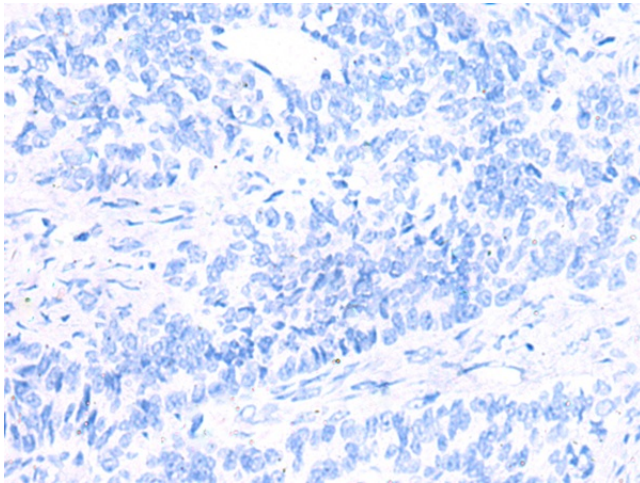
Immunohistochemistry of paraffin-embedded  
Human esophagus cancer tissue using TA368574  
(ISY1-RAB43 Antibody) at dilution 1/55 (Original  
magnification:  $\times$ 200)



Immunohistochemistry of paraffin-embedded Human esophagus cancer tissue using TA368574 (ISY1-RAB43 Antibody) at dilution 1/55, treated with synthetic peptide. (Original magnification: ×200)



Immunohistochemistry of paraffin-embedded Human ovarian cancer tissue using TA368574 (ISY1-RAB43 Antibody) at dilution 1/55 (Original magnification: ×200)



Immunohistochemistry of paraffin-embedded Human ovarian cancer tissue using TA368574 (ISY1-RAB43 Antibody) at dilution 1/55, treated with synthetic peptide. (Original magnification: ×200)