

Product datasheet for **TA368572**

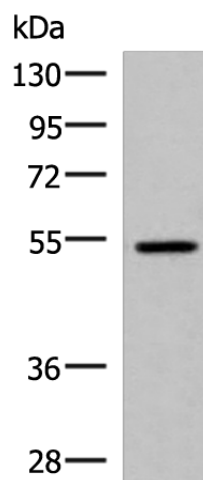
ISM1 Rabbit Polyclonal Antibody

Product data:

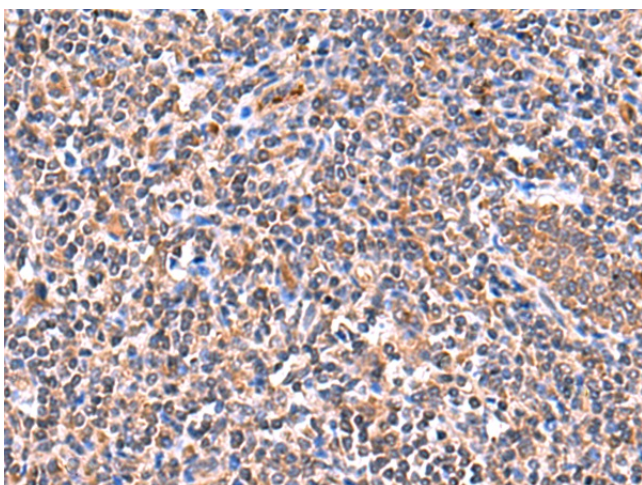
Product Type:	Primary Antibodies
Applications:	IHC, WB
Recommended Dilution:	WB: 1000-5000 WB positive control: HepG2 cell lysate IHC: 50-300 Positive control: Human tonsil Predicted cell location: Secreted
Reactivity:	Human, Mouse
Host:	Rabbit
Isotype:	IgG
Clonality:	Polyclonal
Immunogen:	Synthetic peptide of human ISM1
Formulation:	pH7.4 PBS, 0.05% NaN ₃ , 40% Glycerol
Concentration:	lot specific
Purification:	Antigen affinity purification
Conjugation:	Unconjugated
Storage:	Store at -20°C.
Stability:	1 year
Predicted Protein Size:	52 kDa
Gene Name:	isthmin 1, angiogenesis inhibitor
Database Link:	Entrez Gene 140862 Human B1AKI9
Background:	Acts as an angiogenesis inhibitor.
Synonyms:	bA149118.1; C20orf82; dj107712.1; ISM; Isthmin



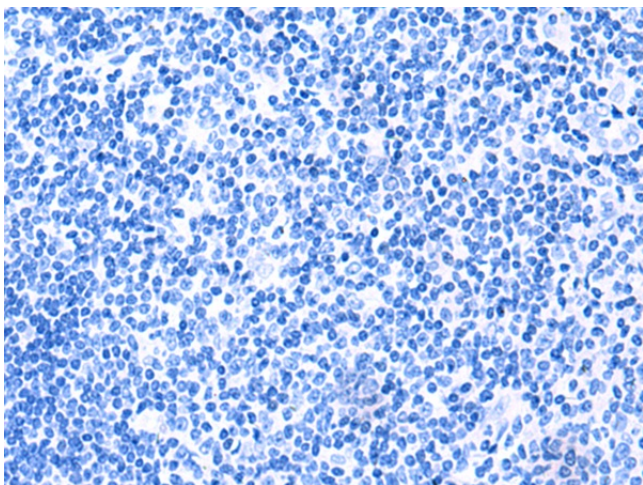
[View online »](#)

Product images:

Gel: 8%SDS-PAGE
Lysate: 40 μ g
Lane: HepG2 cell lysate
Primary antibody: TA368572 (ISM1 Antibody) at dilution 1/1000
Secondary antibody: Goat anti rabbit IgG at 1/5000 dilution
Exposure time: 7 seconds



Immunohistochemistry of paraffin-embedded Human tonsil tissue using TA368572 (ISM1 Antibody) at dilution 1/60 (Original magnification: \times 200)



Immunohistochemistry of paraffin-embedded Human tonsil tissue using TA368572 (ISM1 Antibody) at dilution 1/60, treated with synthetic peptide. (Original magnification: $\times 200$)