

## Product datasheet for **TA368566**

### IRX1 Rabbit Polyclonal Antibody

#### Product data:

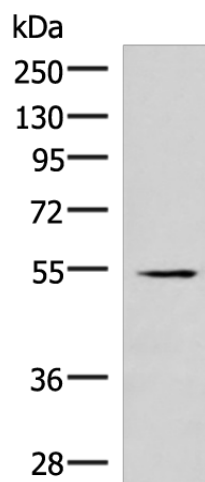
Product Type:	Primary Antibodies
Applications:	IHC, WB
Recommended Dilution:	WB: 500-2000 WB positive control: Human heart tissue lysate IHC: 40-200 Positive control: Human lung cancer Predicted cell location: Nucleus
Reactivity:	Human, Mouse
Host:	Rabbit
Isotype:	IgG
Clonality:	Polyclonal
Immunogen:	Synthetic peptide of human IRX1
Formulation:	pH7.4 PBS, 0.05% NaN <sub>3</sub> , 40% Glycerol
Concentration:	lot specific
Purification:	Antigen affinity purification
Conjugation:	Unconjugated
Storage:	Store at -20°C.
Stability:	1 year
Predicted Protein Size:	50 kDa
Gene Name:	iroquois homeobox 1
Database Link:	<a href="#">Entrez Gene 79192 Human P78414</a>

**Background:** This gene encodes a member of the Iroquois homeobox protein family. Homeobox genes in this family are involved in pattern formation in the embryo. The gene product has been identified as a tumor suppressor in gastric and head and neck cancers. A pseudogene of this gene is located on chromosome 13.

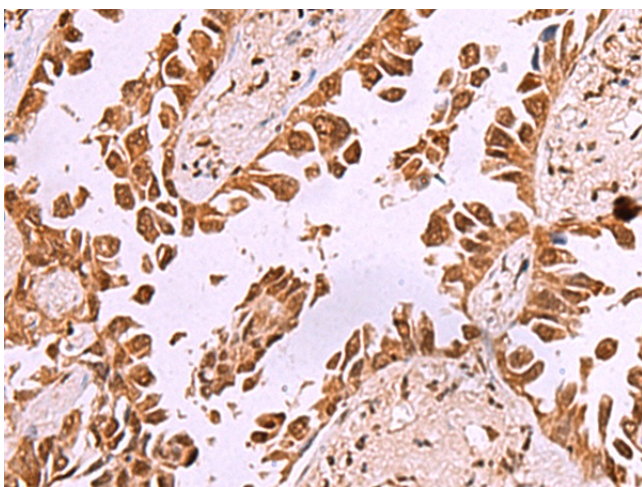
**Synonyms:** IRX-5; IRXA1



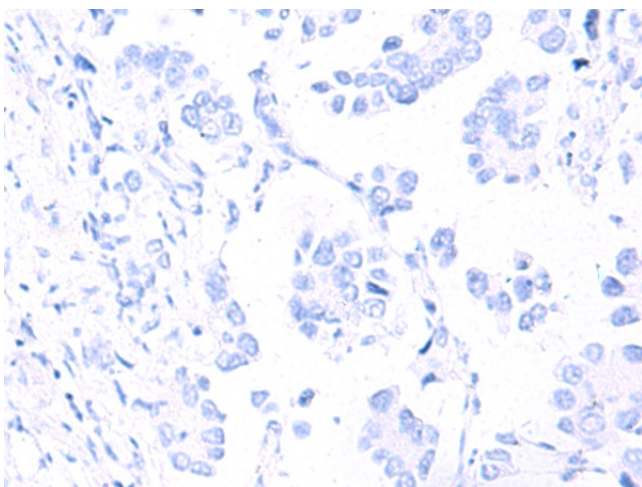
[View online »](#)

**Product images:**


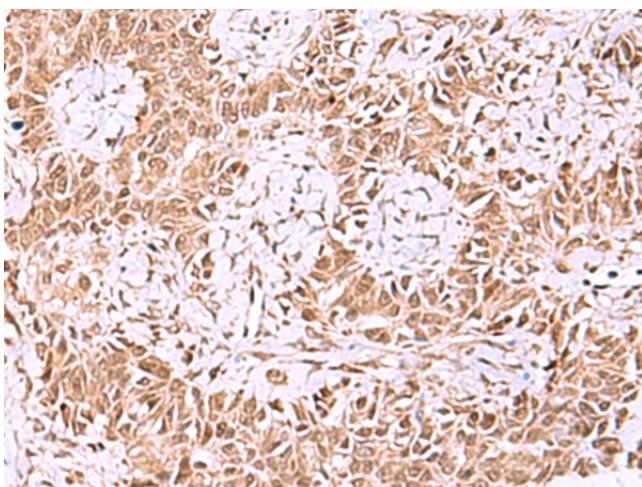
Gel: 8%SDS-PAGE  
 Lysate: 40 µg  
 Lane: Human heart tissue lysate  
 Primary antibody: TA368566 (IRX1 Antibody) at dilution 1/300  
 Secondary antibody: Goat anti rabbit IgG at 1/8000 dilution  
 Exposure time: 1 minute



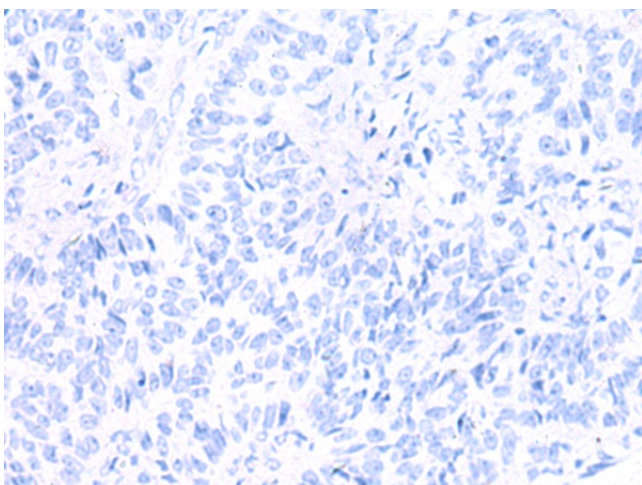
Immunohistochemistry of paraffin-embedded Human lung cancer tissue using TA368566 (IRX1 Antibody) at dilution 1/35 (Original magnification: ×200)



Immunohistochemistry of paraffin-embedded Human lung cancer tissue using TA368566 (IRX1 Antibody) at dilution 1/35, treated with synthetic peptide. (Original magnification: ×200)



Immunohistochemistry of paraffin-embedded Human ovarian cancer tissue using TA368566 (IRX1 Antibody) at dilution 1/35 (Original magnification: ×200)



Immunohistochemistry of paraffin-embedded Human ovarian cancer tissue using TA368566 (IRX1 Antibody) at dilution 1/35, treated with synthetic peptide. (Original magnification: ×200)