

## Product datasheet for **TA368565**

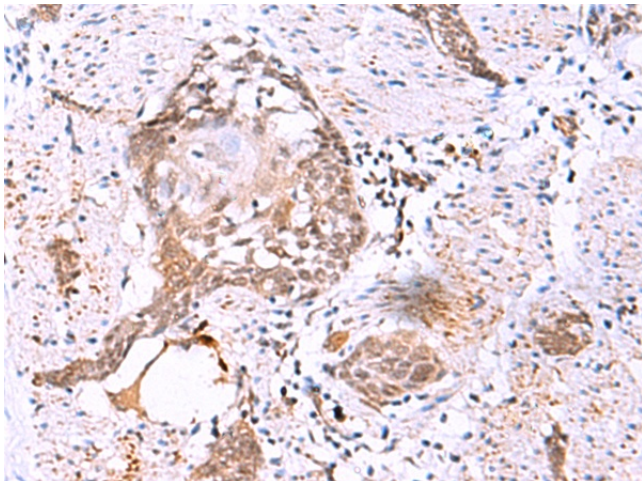
### Iroquois homeobox protein 3 (IRX3) Rabbit Polyclonal Antibody

#### Product data:

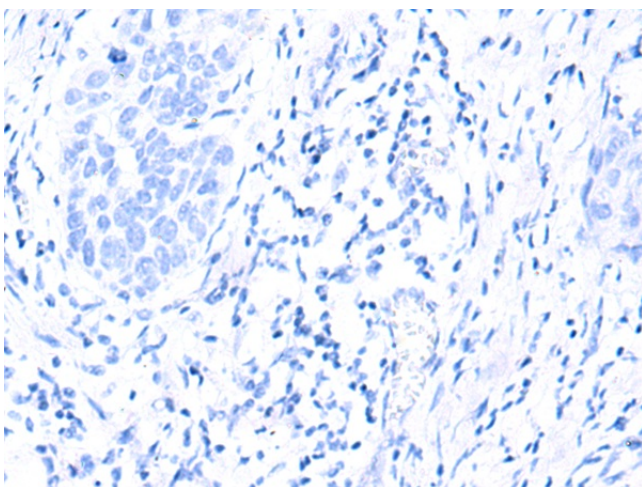
Product Type:	Primary Antibodies
Applications:	IHC
Recommended Dilution:	IHC: 20-100 Positive control: Human esophagus cancer Predicted cell location: Nucleus
Reactivity:	Human, Mouse
Host:	Rabbit
Isotype:	IgG
Clonality:	Polyclonal
Immunogen:	Synthetic peptide of human IRX3
Formulation:	pH7.4 PBS, 0.05% NaN <sub>3</sub> , 40% Glycerol
Concentration:	lot specific
Purification:	Antigen affinity purification
Conjugation:	Unconjugated
Storage:	Store at -20°C.
Stability:	1 year
Gene Name:	iroquois homeobox 3
Database Link:	<a href="#">Entrez Gene 79191 Human P78415</a>
Background:	IRX3 is a member of the Iroquois homeobox gene family and plays a role in an early step of neural development. Members of this family appear to play multiple roles during pattern formation of vertebrate embryos.
Synonyms:	FLJ99187; IRX-1; IRXB1



[View online »](#)

**Product images:**

Immunohistochemistry of paraffin-embedded Human esophagus cancer tissue using TA368565 (IRX3 Antibody) at dilution 1/25 (Original magnification:  $\times 200$ )



Immunohistochemistry of paraffin-embedded Human esophagus cancer tissue using TA368565 (IRX3 Antibody) at dilution 1/25, treated with synthetic peptide. (Original magnification:  $\times 200$ )