

Product datasheet for **TA368562**

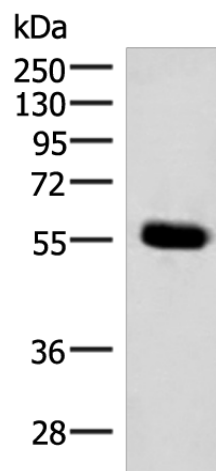
IPPK Rabbit Polyclonal Antibody

Product data:

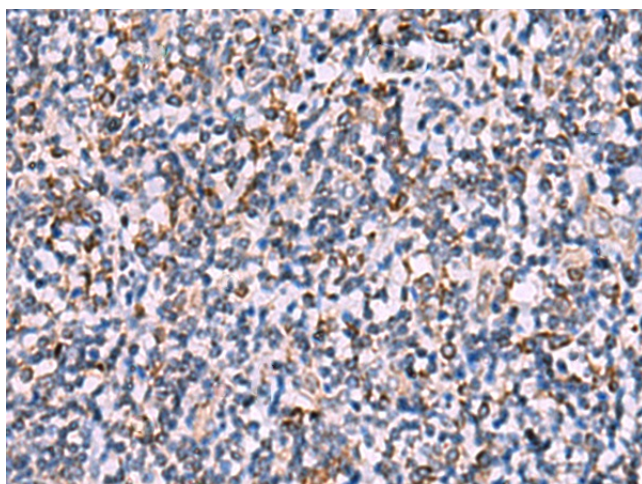
Product Type:	Primary Antibodies
Applications:	IHC, WB
Recommended Dilution:	WB: 500-2000 WB positive control: Mouse pancreas tissue lysate IHC: 30-150 Positive control: Human tonsil Predicted cell location: Cytoplasm
Reactivity:	Human, Mouse, Rat
Host:	Rabbit
Isotype:	IgG
Clonality:	Polyclonal
Immunogen:	Synthetic peptide of human IPPK
Formulation:	pH7.4 PBS, 0.05% NaN ₃ , 40% Glycerol
Concentration:	lot specific
Purification:	Antigen affinity purification
Conjugation:	Unconjugated
Storage:	Store at -20°C.
Stability:	1 year
Predicted Protein Size:	56 kDa
Gene Name:	inositol-pentakisphosphate 2-kinase
Database Link:	Entrez Gene 64768 Human Q9H8X2
Background:	The protein encoded by this gene is a kinase that phosphorylates position 2 of inositol-1,3,4,5,6-pentakisphosphate to form inositol-1,2,3,4,5,6-hexakisphosphate (InsP6). InsP6 has a variety of functions, including stimulation of DNA repair, endocytosis, and mRNA export.
Synonyms:	bA476B13.1; C9orf12; FLJ13163; INSP5K2; IP5K; IPK1; KIAA0699



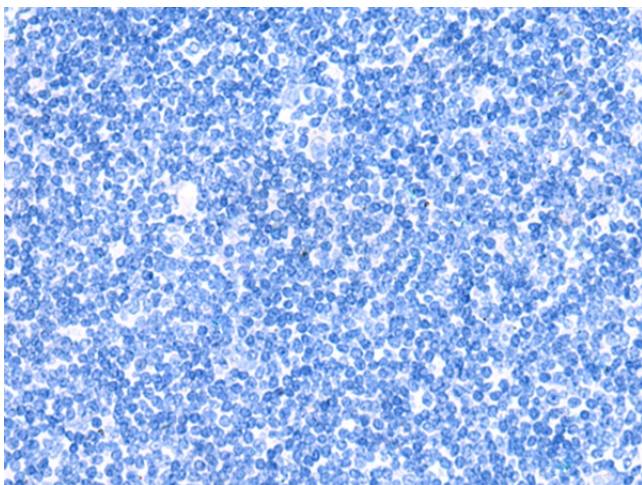
[View online »](#)

Product images:

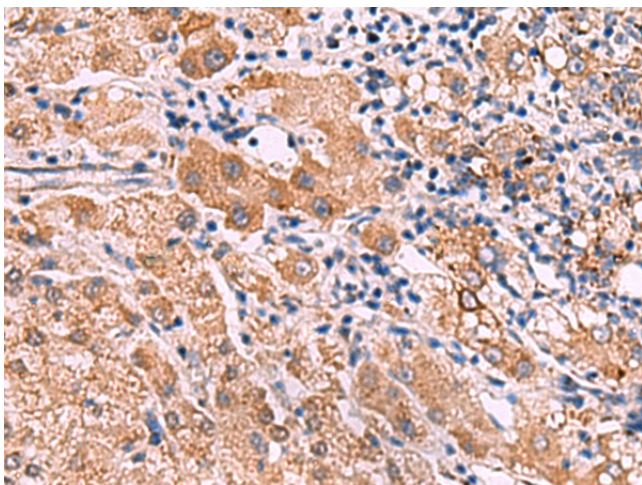
Gel: 8%SDS-PAGE
Lysate: 40 μ g
Lane: Mouse pancreas tissue lysate
Primary antibody: TA368562 (IPPK Antibody) at dilution 1/350
Secondary antibody: Goat anti rabbit IgG at 1/8000 dilution
Exposure time: 10 seconds



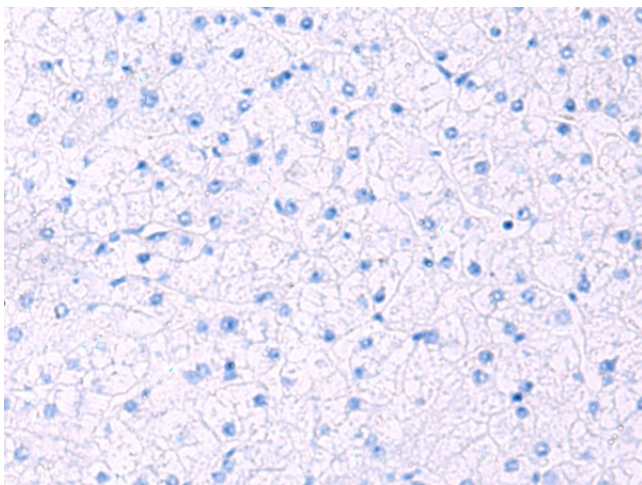
Immunohistochemistry of paraffin-embedded Human tonsil tissue using TA368562 (IPPK Antibody) at dilution 1/30 (Original magnification: \times 200)



Immunohistochemistry of paraffin-embedded Human tonsil tissue using TA368562 (IPPK Antibody) at dilution 1/30, treated with synthetic peptide. (Original magnification: $\times 200$)



Immunohistochemistry of paraffin-embedded Human liver cancer tissue using TA368562 (IPPK Antibody) at dilution 1/30 (Original magnification: $\times 200$)



Immunohistochemistry of paraffin-embedded Human liver cancer tissue using TA368562 (IPPK Antibody) at dilution 1/30, treated with synthetic peptide. (Original magnification: $\times 200$)