

Product datasheet for **TA368561**

IP6K1 Rabbit Polyclonal Antibody

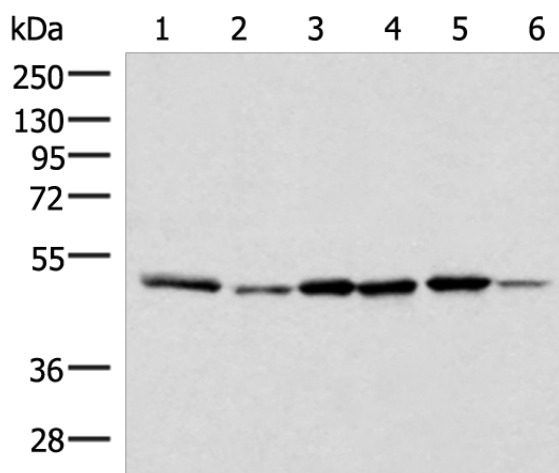
Product data:

Product Type:	Primary Antibodies
Applications:	IHC, WB
Recommended Dilution:	WB: 500-2000 WB positive control: Jurkat, PC-3, HepG2, HeLa, HT-29 and Raji cell lysates IHC: 40-200 Positive control: Human tonsil Predicted cell location: Cytoplasm
Reactivity:	Human, Mouse, Rat
Host:	Rabbit
Isotype:	IgG
Clonality:	Polyclonal
Immunogen:	Synthetic peptide of human IP6K1
Formulation:	pH7.4 PBS, 0.05% NaN ₃ , 40% Glycerol
Concentration:	lot specific
Purification:	Antigen affinity purification
Conjugation:	Unconjugated
Storage:	Store at -20°C.
Stability:	1 year
Predicted Protein Size:	50 kDa
Gene Name:	inositol hexakisphosphate kinase 1
Database Link:	Entrez Gene 9807 Human Q92551
Background:	This gene encodes a member of the inositol phosphokinase family. The encoded protein may be responsible for the conversion of inositol hexakisphosphate (InsP ₆) to diphosphoinositol pentakisphosphate (InsP ₇ /PP-InsP ₅). It may also convert 1,3,4,5,6-pentakisphosphate (InsP ₅) to PP-InsP ₄ . Alternatively spliced transcript variants have been described.
Synonyms:	IHPK1; KIAA0263; MGC9925; PiUS



[View online »](#)

Product images:



Gel: 8%SDS-PAGE

Lysate: 40 μ g

Lane 1-6: Jurkat

PC-3

HepG2

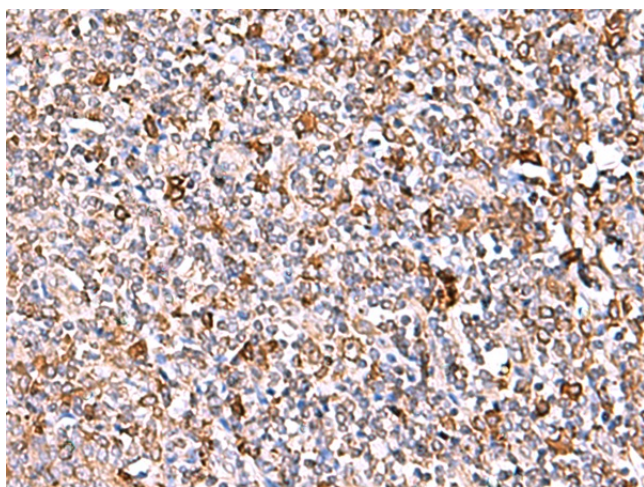
HeLa

HT-29 and Raji cell lysates

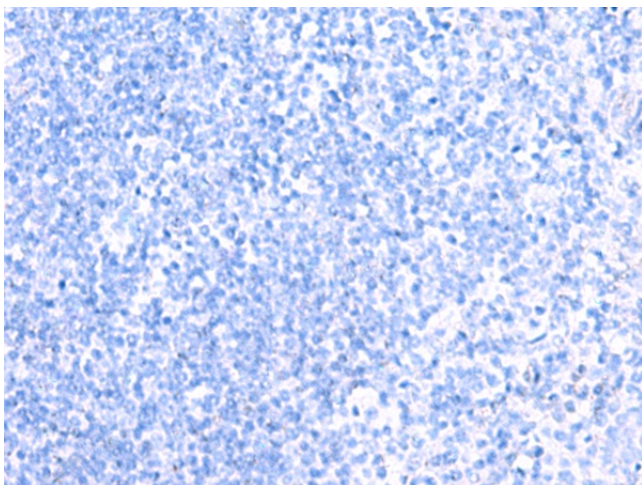
Primary antibody: TA368561 (IP6K1 Antibody) at dilution 1/400

Secondary antibody: Goat anti rabbit IgG at 1/8000 dilution

Exposure time: 5 seconds



Immunohistochemistry of paraffin-embedded Human tonsil tissue using TA368561 (IP6K1 Antibody) at dilution 1/40 (Original magnification: \times 200)



Immunohistochemistry of paraffin-embedded Human tonsil tissue using TA368561 (IP6K1 Antibody) at dilution 1/40, treated with synthetic peptide. (Original magnification: $\times 200$)