

Product datasheet for **TA368557S**

Invadolysin (LMLN) Rabbit Polyclonal Antibody

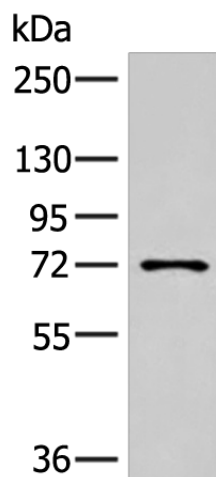
Product data:

Product Type:	Primary Antibodies
Applications:	IHC, WB
Recommended Dilution:	WB: 200-1000 WB positive control: K562 cell lysate IHC: 25-100 Positive control: Human tonsil Predicted cell location: Cytoplasm
Reactivity:	Human
Host:	Rabbit
Isotype:	IgG
Clonality:	Polyclonal
Immunogen:	Synthetic peptide of human LMLN
Formulation:	pH7.4 PBS, 0.05% NaN ₃ , 40% Glycerol
Purification:	Antigen affinity purification
Conjugation:	Unconjugated
Storage:	Store at -20°C.
Stability:	1 year
Predicted Protein Size:	74 kDa
Gene Name:	leishmanolysin like peptidase
Database Link:	Entrez Gene 89782 Human Q96KR4
Background:	This gene encodes a zinc-metallopeptidase. The encoded protein may play a role in cell migration and invasion. Studies of a similar protein in <i>Drosophila</i> indicate a potential role in mitotic progression. Alternatively spliced transcript variants have been described.
Synonyms:	Gp63; INV; invadolysin; IX14; leishmanolysin-2; leishmanolysin-like; Msp

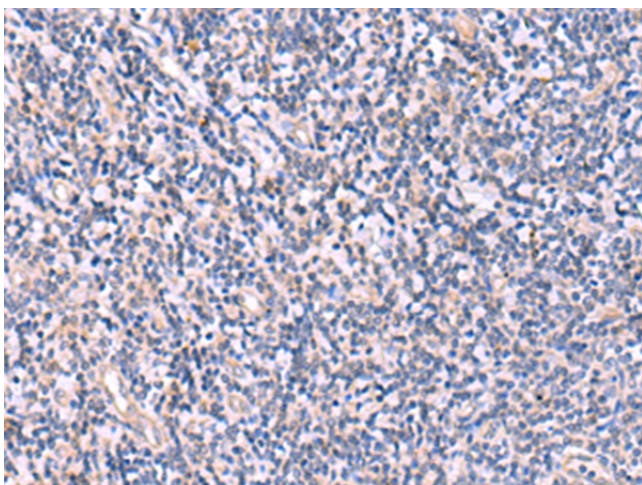


[View online »](#)

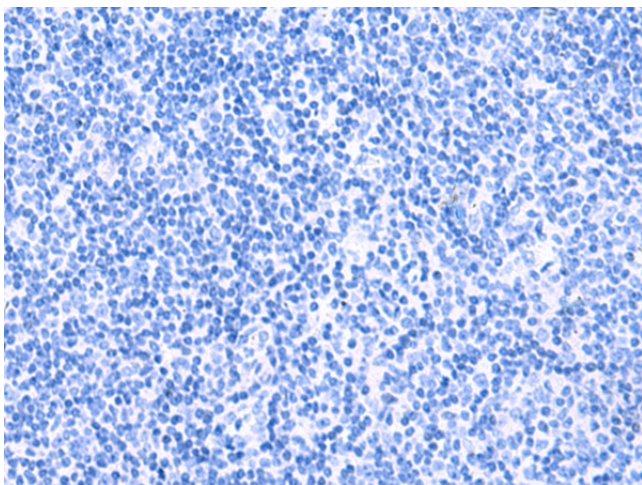
Product images:



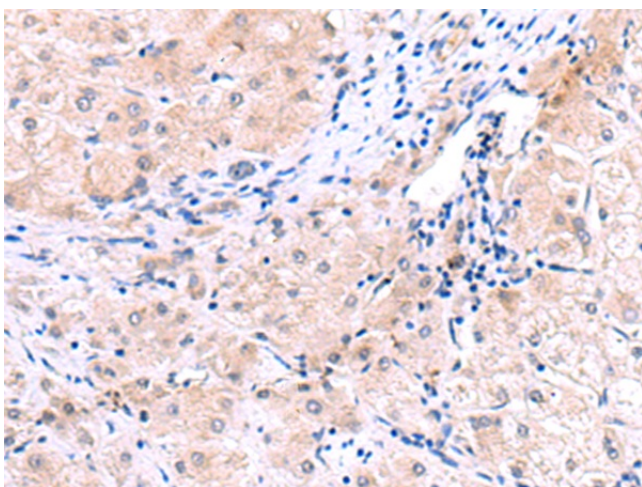
Gel: 8%SDS-PAGE
Lysate: 40 μ g
Lane: K562 cell lysate
Primary antibody: [TA368557] (LMLN Antibody) at dilution 1/250
Secondary antibody: Goat anti rabbit IgG at 1/8000 dilution
Exposure time: 40 seconds



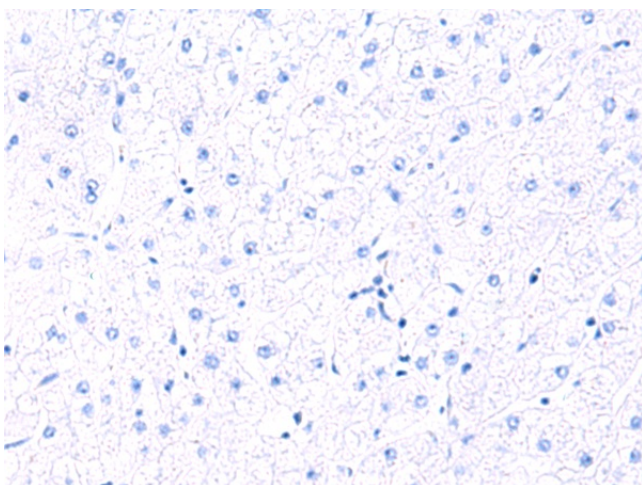
Immunohistochemistry of paraffin-embedded Human tonsil tissue using [TA368557] (LMLN Antibody) at dilution 1/30 (Original magnification: \times 200)



Immunohistochemistry of paraffin-embedded Human tonsil tissue using [TA368557] (LMLN Antibody) at dilution 1/30, treated with synthetic peptide. (Original magnification: $\times 200$)



Immunohistochemistry of paraffin-embedded Human liver cancer tissue using [TA368557] (LMLN Antibody) at dilution 1/30 (Original magnification: $\times 200$)



Immunohistochemistry of paraffin-embedded Human liver cancer tissue using [TA368557] (LMLN Antibody) at dilution 1/30, treated with synthetic peptide. (Original magnification: $\times 200$)