

## Product datasheet for **TA368556S**

### Intersectin 2 (ITSN2) Rabbit Polyclonal Antibody

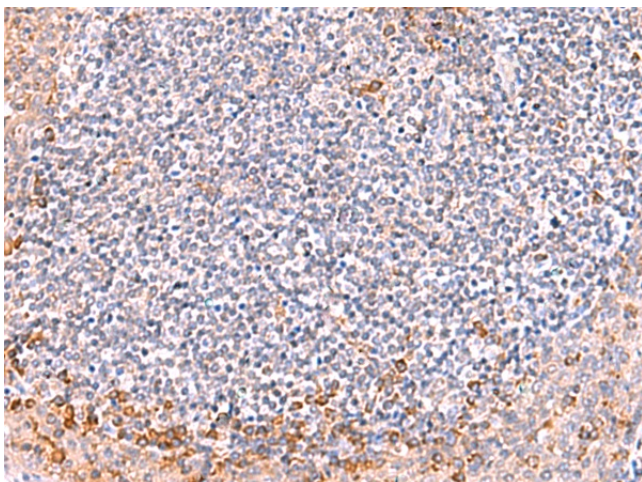
#### Product data:

Product Type:	Primary Antibodies
Applications:	IHC
Recommended Dilution:	IHC: 40-200 Positive control: Human tonsil Predicted cell location: Cytoplasm
Reactivity:	Human, Mouse
Host:	Rabbit
Isotype:	IgG
Clonality:	Polyclonal
Immunogen:	Synthetic peptide of human ITSN2
Formulation:	pH7.4 PBS, 0.05% NaN <sub>3</sub> , 40% Glycerol
Purification:	Antigen affinity purification
Conjugation:	Unconjugated
Storage:	Store at -20°C.
Stability:	1 year
Gene Name:	intersectin 2
Database Link:	<a href="#">Entrez Gene 50618 Human Q9NZM3</a>
Background:	This gene encodes a cytoplasmic protein which contains SH3 domains. This protein is a member of a family of proteins involved in clathrin-mediated endocytosis. Intersectin 2 is thought to regulate the formation of clathrin-coated vesicles and also may function in the induction of T cell antigen receptor (TCR) endocytosis.
Synonyms:	KIAA1256; OTTHUMP00000116039; PRO2015; SH3D1B; SH3P18; SWA; SWAP

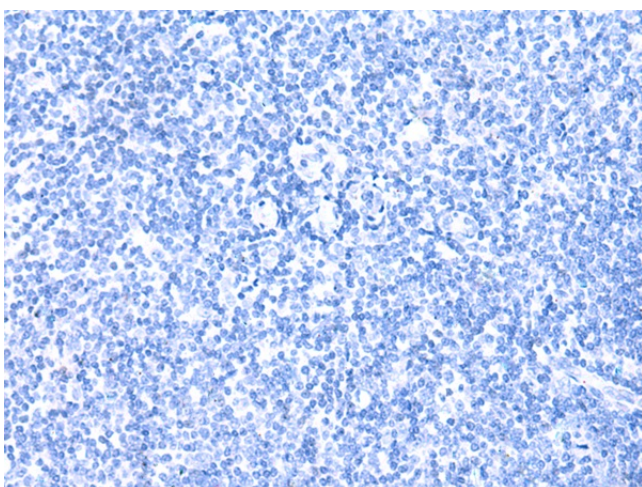


[View online »](#)

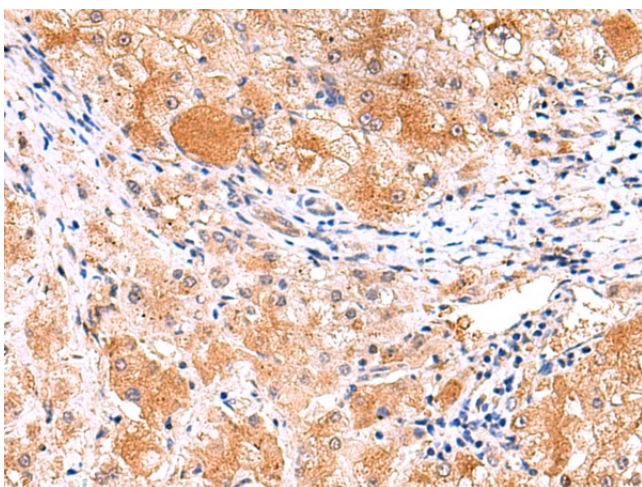
## Product images:



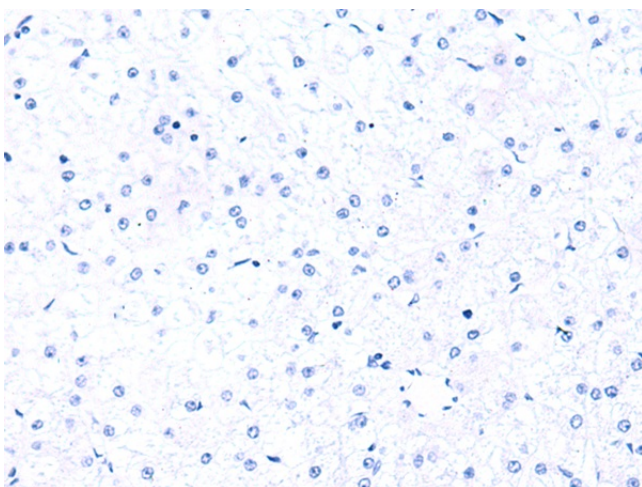
Immunohistochemistry of paraffin-embedded Human tonsil tissue using [TA368556] (ITSN2 Antibody) at dilution 1/40 (Original magnification: ×200)



Immunohistochemistry of paraffin-embedded Human tonsil tissue using [TA368556] (ITSN2 Antibody) at dilution 1/40, treated with synthetic peptide. (Original magnification: ×200)



Immunohistochemistry of paraffin-embedded Human liver cancer tissue using [TA368556] (ITSN2 Antibody) at dilution 1/40 (Original magnification:  $\times 200$ )



Immunohistochemistry of paraffin-embedded Human liver cancer tissue using [TA368556] (ITSN2 Antibody) at dilution 1/40, treated with synthetic peptide. (Original magnification:  $\times 200$ )