

Product datasheet for **TA368555**

Interferon alpha 2 (IFNA2) Rabbit Polyclonal Antibody

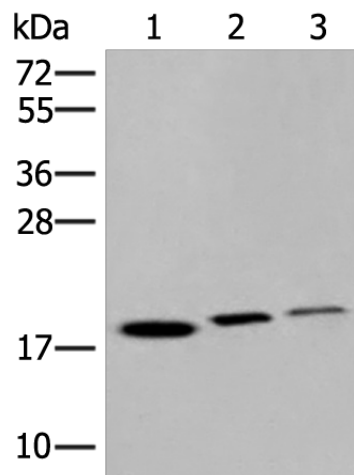
Product data:

Product Type:	Primary Antibodies
Applications:	IHC, WB
Recommended Dilution:	WB: 200-1000 WB positive control: Mouse liver tissue, Hela and Raji cell lysates IHC: 25-100 Positive control: Human tonsil Predicted cell location: Secreted
Reactivity:	Human, Mouse
Host:	Rabbit
Isotype:	IgG
Clonality:	Polyclonal
Immunogen:	Synthetic peptide of human IFNA2
Formulation:	pH7.4 PBS, 0.05% NaN ₃ , 40% Glycerol
Concentration:	lot specific
Purification:	Antigen affinity purification
Conjugation:	Unconjugated
Storage:	Store at -20°C.
Stability:	1 year
Predicted Protein Size:	22 kDa
Gene Name:	interferon, alpha 2
Database Link:	Entrez Gene 3440 Human P01563
Background:	This gene is a member of the alpha interferon gene cluster on chromosome 9. The encoded protein is a cytokine produced in response to viral infection. Use of the recombinant form of this protein has been shown to be effective in reducing the symptoms and duration of the common cold.
Synonyms:	IFNA; INFA2; MGC125764; MGC125765

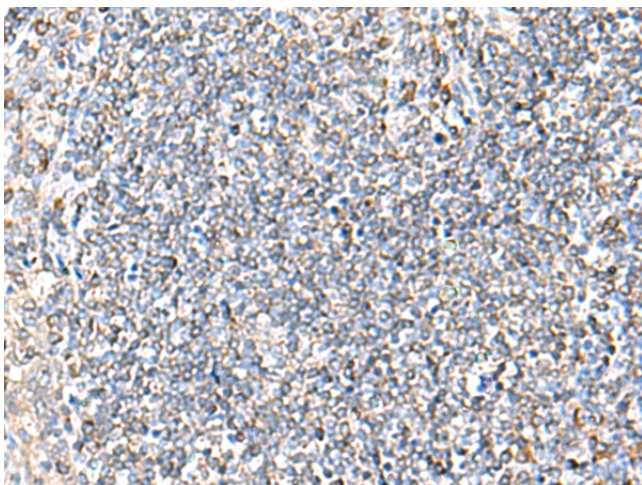


[View online »](#)

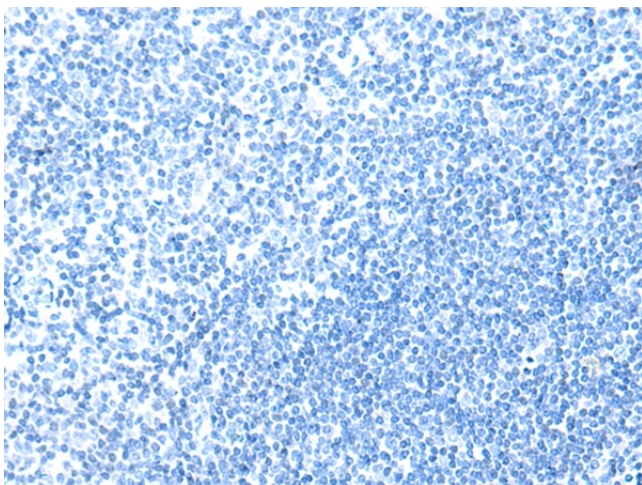
Product images:



Gel: 12%SDS-PAGE
Lysate: 40 μ g
Lane 1-3: Mouse liver tissue
HeLa and Raji cell lysates
Primary antibody: TA368555 (IFNA2 Antibody) at dilution 1/300
Secondary antibody: Goat anti rabbit IgG at 1/8000 dilution
Exposure time: 15 seconds



Immunohistochemistry of paraffin-embedded Human tonsil tissue using TA368555 (IFNA2 Antibody) at dilution 1/30 (Original magnification: \times 200)



Immunohistochemistry of paraffin-embedded Human tonsil tissue using TA368555 (IFNA2 Antibody) at dilution 1/30, treated with synthetic peptide. (Original magnification: $\times 200$)