

Product datasheet for **TA368543**

IL37 Rabbit Polyclonal Antibody

Product data:

Product Type:	Primary Antibodies
Applications:	IHC, WB
Recommended Dilution:	WB: 500-2000 WB positive control: A549, HT29 and Raji cell lysates IHC: 20-100 Positive control: Human brain Predicted cell location: Cytoplasm
Reactivity:	Human
Host:	Rabbit
Isotype:	IgG
Clonality:	Polyclonal
Immunogen:	Synthetic peptide of human IL37
Formulation:	pH7.4 PBS, 0.05% NaN ₃ , 40% Glycerol
Concentration:	lot specific
Purification:	Antigen affinity purification
Conjugation:	Unconjugated
Storage:	Store at -20°C.
Stability:	1 year
Predicted Protein Size:	24 kDa
Gene Name:	interleukin 37
Database Link:	Entrez Gene 27178 Human Q9NZH6



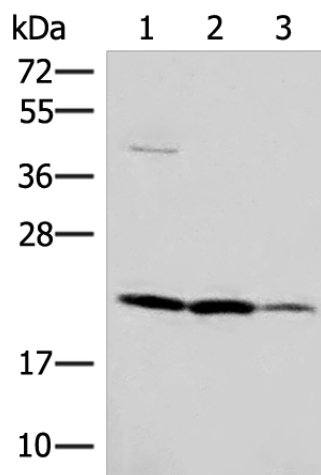
[View online »](#)

Background:

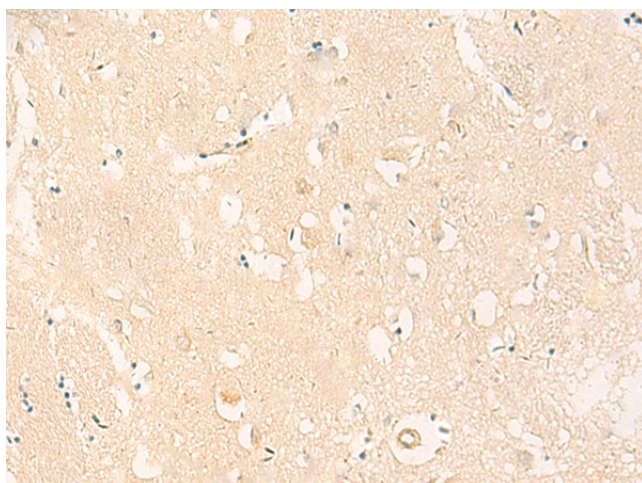
The protein encoded by this gene is a member of the interleukin 1 cytokine family. This cytokine can bind to, and may be a ligand for interleukin 18 receptor (IL18R1/IL-1Rrp). This cytokine also binds to interleukin 18 binding protein (IL18BP), an inhibitory binding protein of interleukin 18 (IL18), and subsequently forms a complex with IL18 receptor beta subunit, and through which it inhibits the activity of IL18. This gene along with eight other interleukin 1 family genes form a cytokine gene cluster on chromosome 2. Five alternatively spliced transcript variants encoding distinct isoforms have been reported.

Synonyms:

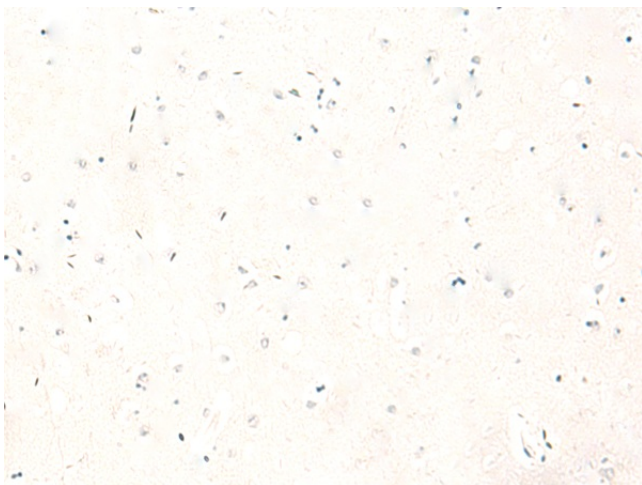
FIL1; FIL1(ZETA); FIL1Z; IL-1F7; IL-1H; IL-1H4; IL-1RP1; IL-37; IL1F7; IL1H4; IL1RP1

Product images:


Gel: 12%SDS-PAGE
 Lysate: 40 µg
 Lane 1-3: A549
 HT29 and Raji cell lysates
 Primary antibody: TA368543 (IL37 Antibody) at dilution 1/650
 Secondary antibody: Goat anti rabbit IgG at 1/8000 dilution
 Exposure time: 5 seconds



Immunohistochemistry of paraffin-embedded Human brain tissue using TA368543 (IL37 Antibody) at dilution 1/50 (Original magnification: ×200)



Immunohistochemistry of paraffin-embedded Human brain tissue using TA368543 (IL37 Antibody) at dilution 1/50, treated with synthetic peptide. (Original magnification: $\times 200$)