

## Product datasheet for **TA368537S**

### **IKAP (IKBKAP) Rabbit Polyclonal Antibody**

#### **Product data:**

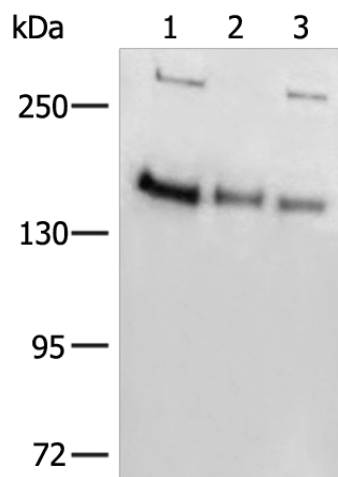
Product Type:	Primary Antibodies
Applications:	IHC, WB
Recommended Dilution:	WB: 200-1000 WB positive control: 231, K562 and A172 cell lysates IHC: 25-100 Positive control: Human tonsil Predicted cell location: Cytoplasm
Reactivity:	Human
Host:	Rabbit
Isotype:	IgG
Clonality:	Polyclonal
Immunogen:	Synthetic peptide of human ELP1
Formulation:	pH7.4 PBS, 0.05% NaN <sub>3</sub> , 40% Glycerol
Purification:	Antigen affinity purification
Conjugation:	Unconjugated
Storage:	Store at -20°C.
Stability:	1 year
Predicted Protein Size:	150 kDa
Gene Name:	inhibitor of kappa light polypeptide gene enhancer in B-cells, kinase complex-associated protein
Database Link:	<a href="#">Entrez Gene 8518 Human O95163</a>
Background:	The protein encoded by this gene is a scaffold protein and a regulator for three different kinases involved in proinflammatory signaling. The encoded protein can bind NF-kappa-B-inducing kinase and I-kappa-B kinases through separate domains and assemble them into an active kinase complex. Mutations in this gene have been associated with familial dysautonomia. Alternative splicing results in multiple transcript variants encoding different isoforms.



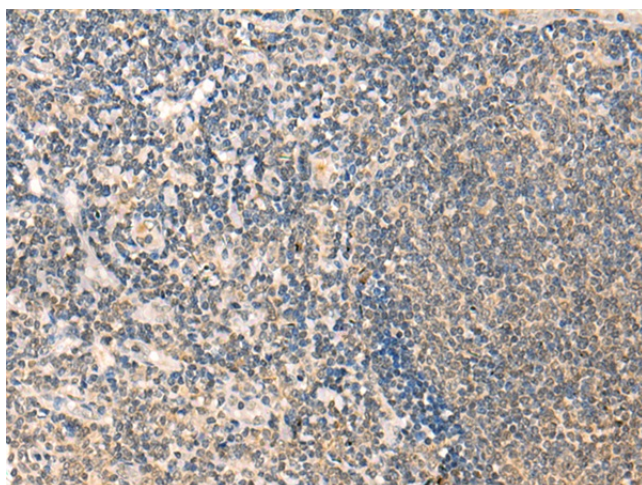
[View online »](#)

Synonyms: DKFZp781H1425; DYS; ELP1; FD; FLJ12497; IKAP; IKI3; p150; TOT1

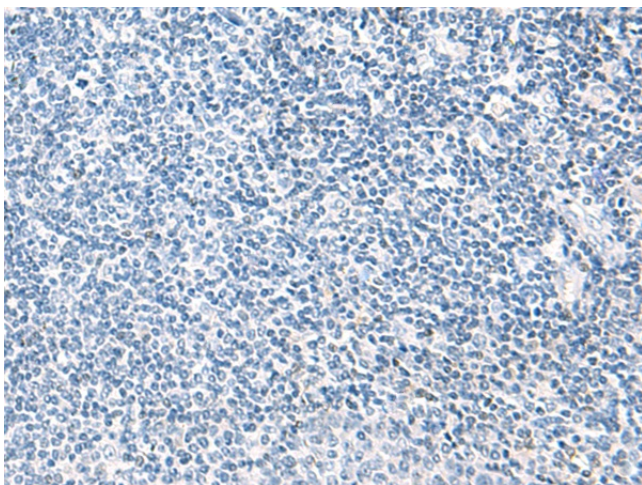
**Product images:**



Gel: 6%SDS-PAGE  
 Lysate: 40 µg  
 Lane 1-3: 231  
 K562 and A172 cell lysates  
 Primary antibody: [TA368537] (ELP1 Antibody) at dilution 1/200  
 Secondary antibody: Goat anti rabbit IgG at 1/8000 dilution  
 Exposure time: 1 minute



Immunohistochemistry of paraffin-embedded Human tonsil tissue using [TA368537] (ELP1 Antibody) at dilution 1/25 (Original magnification: ×200)



Immunohistochemistry of paraffin-embedded Human tonsil tissue using [TA368537] (ELP1 Antibody) at dilution 1/25, treated with synthetic peptide. (Original magnification:  $\times 200$ )