

Product datasheet for **TA368524**

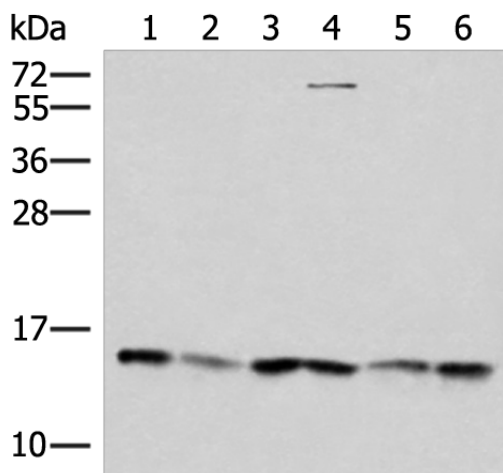
HSPC152 (TRMT112) Rabbit Polyclonal Antibody

Product data:

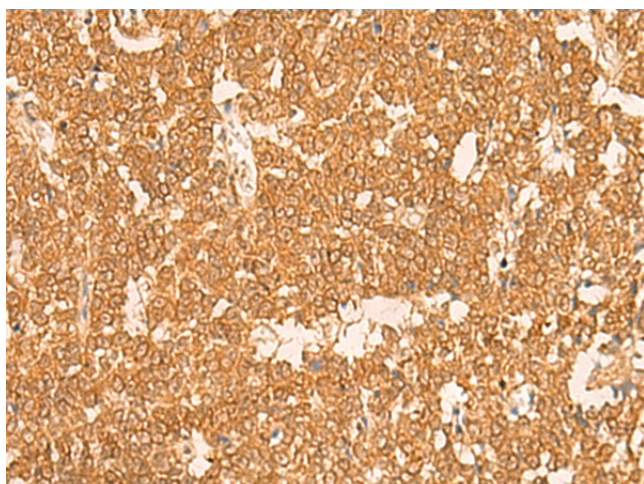
Product Type:	Primary Antibodies
Applications:	IHC, WB
Recommended Dilution:	WB: 200-1000 WB positive control: 231, A172, A549, HepG2, PC3 and Hela cell lysates IHC: 40-200 Positive control: Human ovarian cancer Predicted cell location: Cytoplasm and Nucleus
Reactivity:	Human, Mouse
Host:	Rabbit
Isotype:	IgG
Clonality:	Polyclonal
Immunogen:	Synthetic peptide of human TRMT112
Formulation:	pH7.4 PBS, 0.05% NaN ₃ , 40% Glycerol
Concentration:	lot specific
Purification:	Antigen affinity purification
Conjugation:	Unconjugated
Storage:	Store at -20°C.
Stability:	1 year
Predicted Protein Size:	14 kDa
Gene Name:	tRNA methyltransferase 11-2 homolog (<i>S. cerevisiae</i>)
Database Link:	Entrez Gene 51504 Human Q9UI30
Background:	Participates both in methylation of protein and tRNA species. The heterodimer with HEMK2/N6AMT1 catalyzes N5-methylation of ETF1 on 'Gln-185', using S-adenosyl L-methionine as methyl donor. The heterodimer with ALKBH8 catalyzes the methylation of 5-carboxymethyl uridine to 5-methylcarboxymethyl uridine at the wobble position of the anticodon loop in target tRNA species.
Synonyms:	HSPC152; HSPC170; TRM112; TRMT11-2



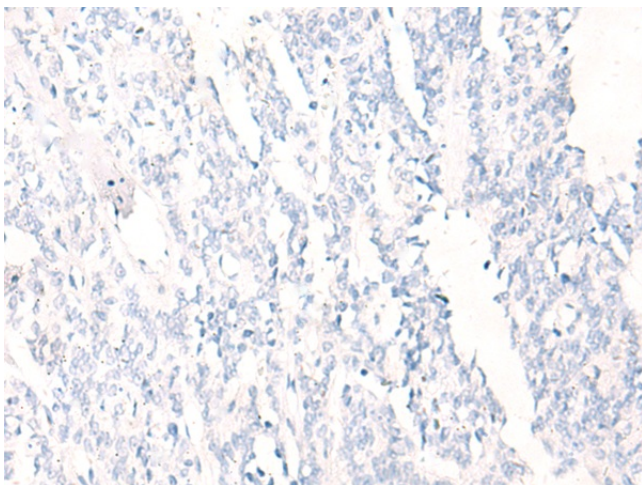
[View online »](#)

Product images:


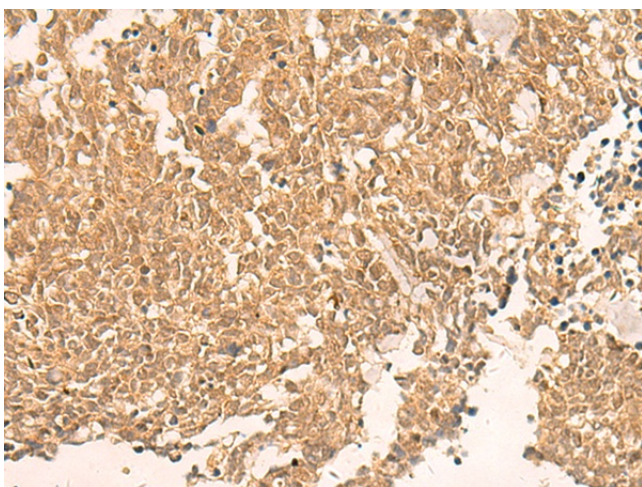
Gel: 12%SDS-PAGE
 Lysate: 40 μ g
 Lane 1-6: 231
 A172
 A549
 HepG2
 PC3 and Hela cell lysates
 Primary antibody: TA368524 (TRMT112 Antibody)
 at dilution 1/300
 Secondary antibody: Goat anti rabbit IgG at
 1/8000 dilution
 Exposure time: 30 seconds



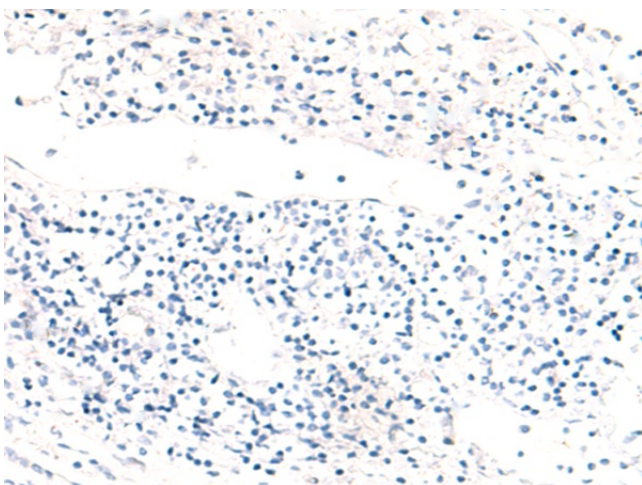
Immunohistochemistry of paraffin-embedded
 Human ovarian cancer tissue using TA368524
 (TRMT112 Antibody) at dilution 1/30 (Original
 magnification: \times 200)



Immunohistochemistry of paraffin-embedded Human ovarian cancer tissue using TA368524 (TRMT112 Antibody) at dilution 1/30, treated with synthetic peptide. (Original magnification: ×200)



Immunohistochemistry of paraffin-embedded Human lung cancer tissue using TA368524 (TRMT112 Antibody) at dilution 1/30 (Original magnification: ×200)



Immunohistochemistry of paraffin-embedded Human lung cancer tissue using TA368524 (TRMT112 Antibody) at dilution 1/30, treated with synthetic peptide. (Original magnification: ×200)