

Product datasheet for **TA368503**

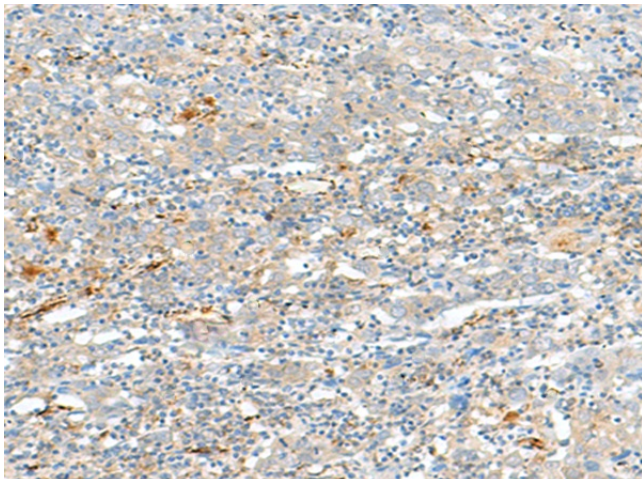
HLA-DQA2 Rabbit Polyclonal Antibody

Product data:

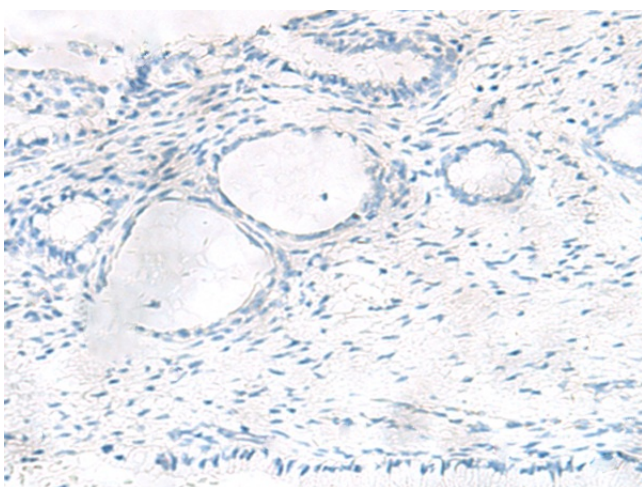
Product Type:	Primary Antibodies
Applications:	IHC
Recommended Dilution:	IHC: 20-100 Positive control: Human cervical cancer Predicted cell location: Cell membrane
Reactivity:	Human
Host:	Rabbit
Isotype:	IgG
Clonality:	Polyclonal
Immunogen:	Synthetic peptide of human HLA-DQA2
Formulation:	pH7.4 PBS, 0.05% NaN ₃ , 40% Glycerol
Concentration:	lot specific
Purification:	Antigen affinity purification
Conjugation:	Unconjugated
Storage:	Store at -20°C.
Stability:	1 year
Gene Name:	major histocompatibility complex, class II, DQ alpha 2
Database Link:	Entrez Gene 3118 Human P01906
Background:	This gene belongs to the HLA class II alpha chain family. The encoded protein forms a heterodimer with a class II beta chain. It is located in intracellular vesicles and plays a central role in the peptide loading of MHC class II molecules by helping to release the CLIP molecule from the peptide binding site. Class II molecules are expressed in antigen presenting cells (B lymphocytes, dendritic cells, macrophages) and are used to present antigenic peptides on the cell surface to be recognized by CD4 T-cells.
Synonyms:	DX-ALPHA; HLA-DXA



[View online »](#)

Product images:

Immunohistochemistry of paraffin-embedded Human cervical cancer tissue using TA368503 (HLA-DQA2 Antibody) at dilution 1/20 (Original magnification: $\times 200$)



Immunohistochemistry of paraffin-embedded Human cervical cancer tissue using TA368503 (HLA-DQA2 Antibody) at dilution 1/20, treated with synthetic peptide. (Original magnification: $\times 200$)