

Product datasheet for **TA368497**

Histone H1x (H1FX) Rabbit Polyclonal Antibody

Product data:

| | |
|-------------------------|---|
| Product Type: | Primary Antibodies |
| Applications: | IHC, WB |
| Recommended Dilution: | WB: 200-1000 WB positive control: Human left thymus tissue lysate IHC: 50-300 Positive control: Human esophagus cancer Predicted cell location: Nucleus |
| Reactivity: | Human |
| Host: | Rabbit |
| Isotype: | IgG |
| Clonality: | Polyclonal |
| Immunogen: | Synthetic peptide of human H1-10 |
| Formulation: | pH7.4 PBS, 0.05% NaN ₃ , 40% Glycerol |
| Concentration: | lot specific |
| Purification: | Antigen affinity purification |
| Conjugation: | Unconjugated |
| Storage: | Store at -20°C. |
| Stability: | 1 year |
| Predicted Protein Size: | 22 kDa |
| Gene Name: | H1 histone family member X |
| Database Link: | Entrez Gene 8971 Human Q92522 |



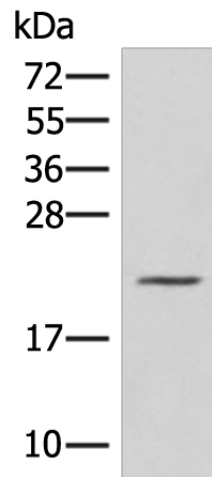
[View online »](#)

Background:

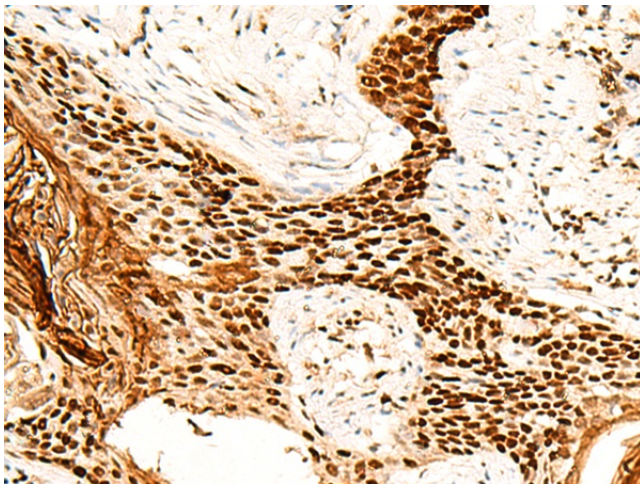
Histones are basic nuclear proteins that are responsible for the nucleosome structure of the chromosomal fiber in eukaryotes. Nucleosomes consist of approximately 146 bp of DNA wrapped around a histone octamer composed of pairs of each of the four core histones (H2A, H2B, H3, and H4). The chromatin fiber is further compacted through the interaction of a linker histone, H1, with the DNA between the nucleosomes to form higher order chromatin structures. This gene encodes a replication-independent histone that is a member of the histone H1 family. [provided by RefSeq, Oct 2015]

Synonyms:

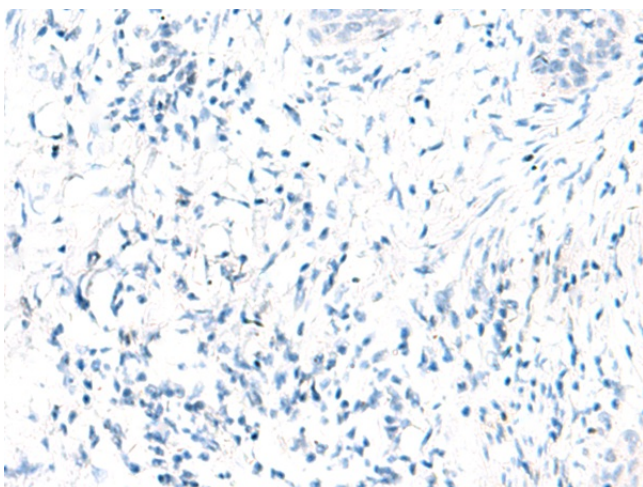
H1X; MGC8350; MGC15959

Product images:

Gel: 12%SDS-PAGE
Lysate: 40 µg
Lane: Human left thymus tissue lysate
Primary antibody: TA368497 (H1-10 Antibody) at dilution 1/500
Secondary antibody: Goat anti rabbit IgG at 1/8000 dilution
Exposure time: 2 minutes



Immunohistochemistry of paraffin-embedded Human esophagus cancer tissue using TA368497 (H1-10 Antibody) at dilution 1/60 (Original magnification: ×200)



Immunohistochemistry of paraffin-embedded Human esophagus cancer tissue using TA368497 (H1-10 Antibody) at dilution 1/60, treated with synthetic peptide. (Original magnification: ×200)