

Product datasheet for **TA368495**

Histone acetyltransferase MYST3 (KAT6A) Rabbit Polyclonal Antibody

Product data:

Product Type:	Primary Antibodies
Applications:	IHC
Recommended Dilution:	IHC: 25-100 Positive control: Human esophagus cancer Predicted cell location: Nucleus
Reactivity:	Human, Mouse, Rat
Host:	Rabbit
Isotype:	IgG
Clonality:	Polyclonal
Immunogen:	Synthetic peptide of human KAT6A
Formulation:	pH7.4 PBS, 0.05% NaN ₃ , 40% Glycerol
Concentration:	lot specific
Purification:	Antigen affinity purification
Conjugation:	Unconjugated
Storage:	Store at -20°C.
Stability:	1 year
Gene Name:	lysine acetyltransferase 6A
Database Link:	Entrez Gene 7994 Human Q92794

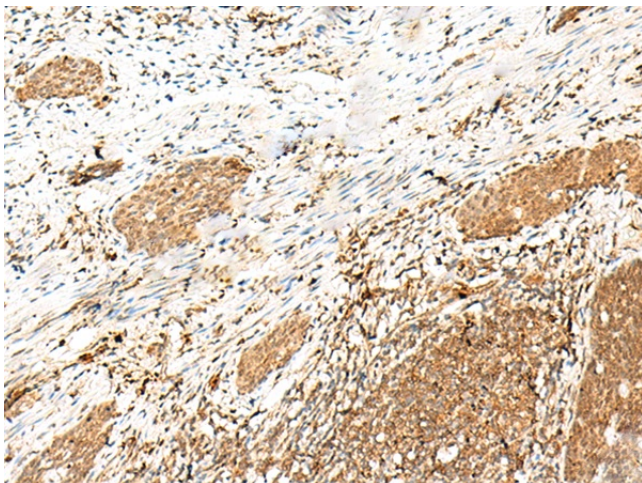
Background: This gene encodes a member of the MOZ, YBFR2, SAS2, TIP60 family of histone acetyltransferases. The protein is composed of a nuclear localization domain, a double C2H2 zinc finger domain that binds to acetylated histone tails, a histone acetyl-transferase domain, a glutamate/aspartate-rich region, and a serine- and methionine-rich transactivation domain. It is part of a complex that acetylates lysine-9 residues in histone 3, and in addition, it acts as a co-activator for several transcription factors. Allelic variants of this gene are associated with an autosomal dominant form of cognitive disability. Chromosomal translocations of this gene are associated with acute myeloid leukemia. Alternative splicing results in multiple transcript variants.



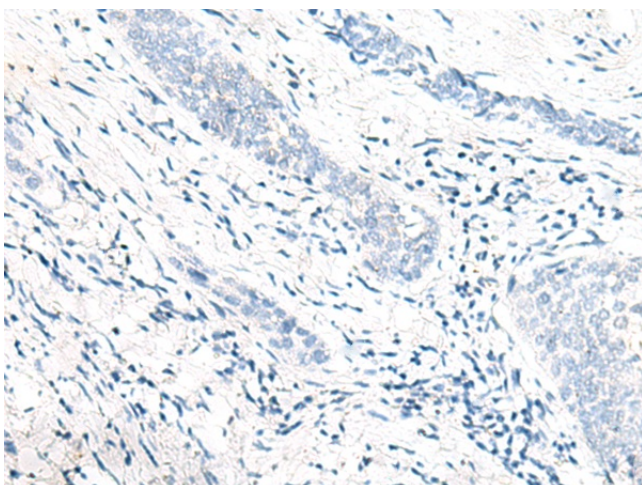
[View online »](#)

Synonyms: 1500036M03; 9930021N24Rik; MOZ; Moz; Myst3; Runxpb2; Zfp220; Znf220

Product images:



Immunohistochemistry of paraffin-embedded Human esophagus cancer tissue using TA368495 (KAT6A Antibody) at dilution 1/20 (Original magnification: $\times 200$)



Immunohistochemistry of paraffin-embedded Human esophagus cancer tissue using TA368495 (KAT6A Antibody) at dilution 1/20, treated with synthetic peptide. (Original magnification: $\times 200$)