

## Product datasheet for **TA368493**

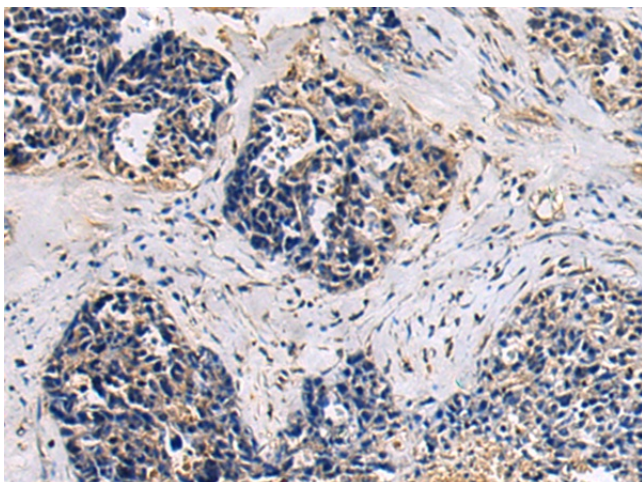
### HIC2 Rabbit Polyclonal Antibody

#### Product data:

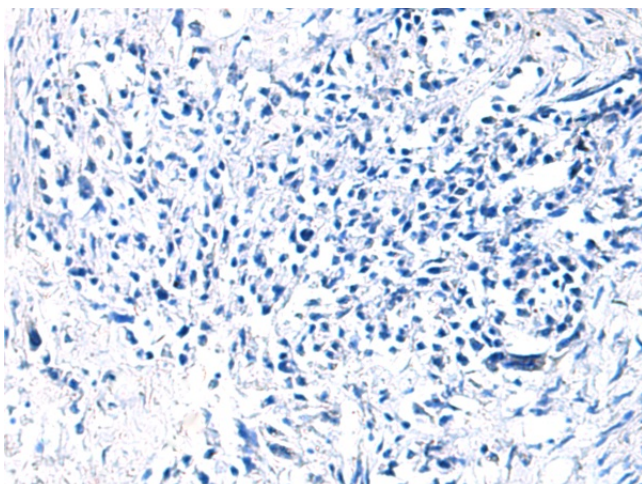
Product Type:	Primary Antibodies
Applications:	IHC
Recommended Dilution:	IHC: 50-200 Positive control: Human ovarian cancer Predicted cell location: Cytoplasm
Reactivity:	Human, Mouse
Host:	Rabbit
Isotype:	IgG
Clonality:	Polyclonal
Immunogen:	Synthetic peptide of human HIC2
Formulation:	pH7.4 PBS, 0.05% NaN <sub>3</sub> , 40% Glycerol
Concentration:	lot specific
Purification:	Antigen affinity purification
Conjugation:	Unconjugated
Storage:	Store at -20°C.
Stability:	1 year
Gene Name:	hypermethylated in cancer 2
Database Link:	<a href="#">Entrez Gene 23119 Human Q96JB3</a>
Background:	Transcriptional repressor.
Synonyms:	Hic-2; Hic-3; HIC1-related; HRG22; KIAA1020; OTTHUMP00000198510; OTTHUMP00000198511; ZBTB30



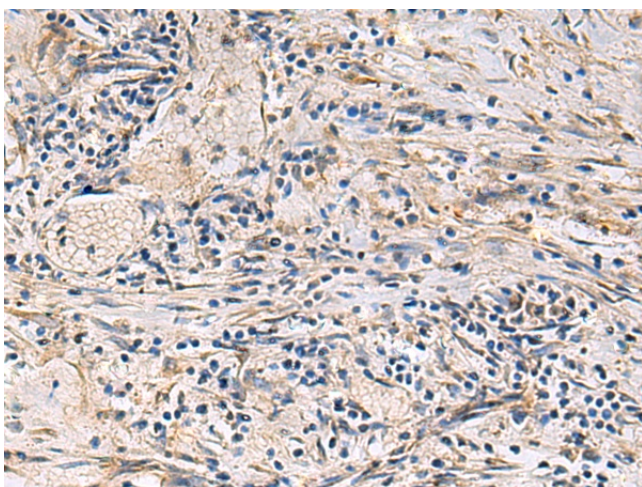
[View online »](#)

**Product images:**

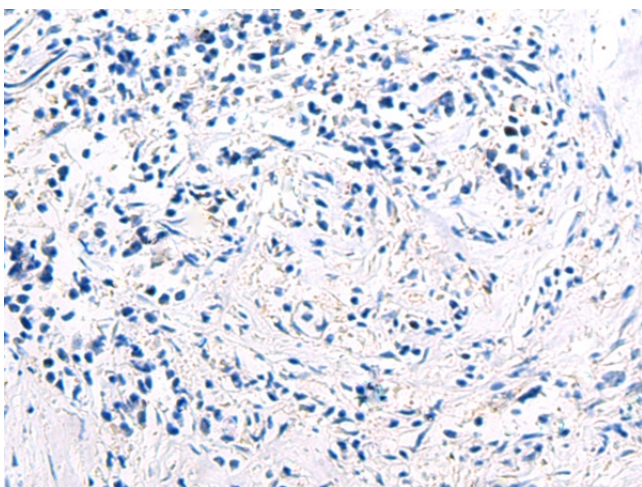
Immunohistochemistry of paraffin-embedded Human ovarian cancer using TA368493 (HIC2 Antibody) at dilution 1/75 (Original magnification: ×200)



Immunohistochemistry of paraffin-embedded Human ovarian cancer using TA368493 (HIC2 Antibody) at dilution 1/75, treated with synthetic peptide. (Original magnification: ×200)



Immunohistochemistry of paraffin-embedded Human breast cancer using TA368493 (HIC2 Antibody) at dilution 1/75 (Original magnification: ×200)



Immunohistochemistry of paraffin-embedded Human breast cancer using TA368493 (HIC2 Antibody) at dilution 1/75, treated with synthetic peptide. (Original magnification: ×200)