

## Product datasheet for **TA368488S**

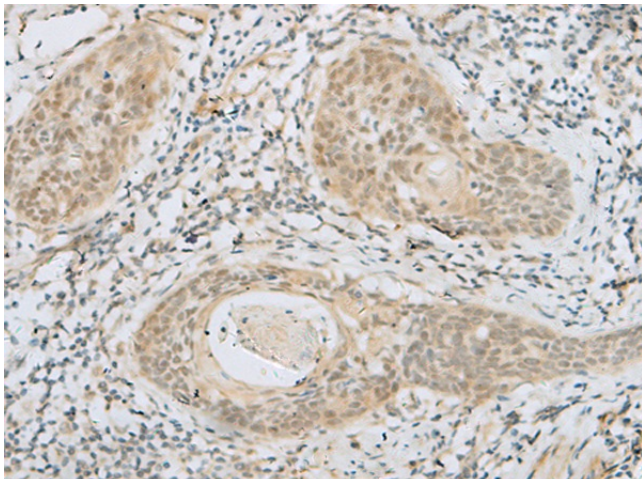
### HELT Rabbit Polyclonal Antibody

#### Product data:

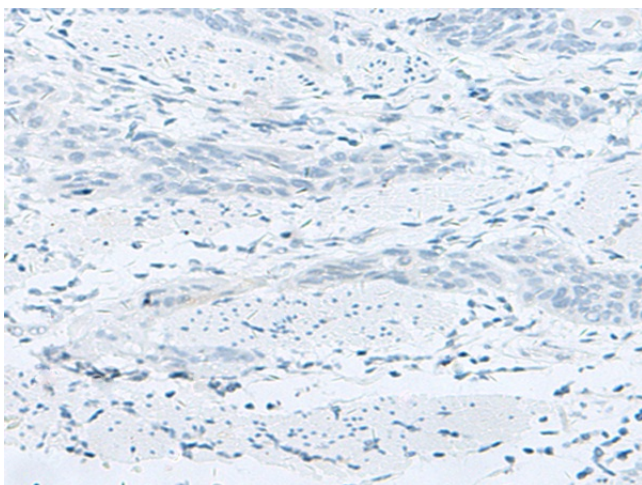
Product Type:	Primary Antibodies
Applications:	IHC
Recommended Dilution:	IHC: 30-150 Positive control: Human esophagus cancer Predicted cell location: Nucleus or Cytoplasm
Reactivity:	Human, Mouse
Host:	Rabbit
Isotype:	IgG
Clonality:	Polyclonal
Immunogen:	Synthetic peptide of human HELT
Formulation:	pH7.4 PBS, 0.05% NaN <sub>3</sub> , 40% Glycerol
Purification:	Antigen affinity purification
Conjugation:	Unconjugated
Storage:	Store at -20°C.
Stability:	1 year
Gene Name:	helt bHLH transcription factor
Database Link:	<a href="#">Entrez Gene 391723 Human A6NFD8</a>
Background:	Transcriptional repressor which binds preferentially to the canonical E box sequence 5'-CACGCG-3'.
Synonyms:	HCM1228; HES-like; HESL; Heslike; Mgn



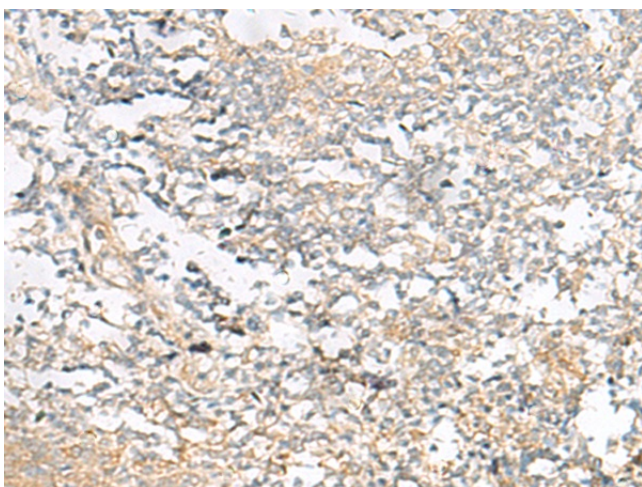
[View online »](#)

**Product images:**

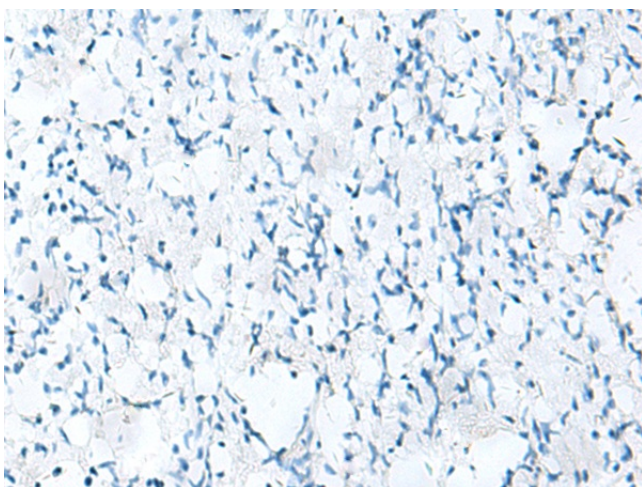
Immunohistochemistry of paraffin-embedded Human esophagus cancer tissue using [TA368488] (HELT Antibody) at dilution 1/40 (Original magnification:  $\times 200$ )



Immunohistochemistry of paraffin-embedded Human esophagus cancer tissue using [TA368488] (HELT Antibody) at dilution 1/40, treated with synthetic peptide. (Original magnification:  $\times 200$ )



Immunohistochemistry of paraffin-embedded Human tonsil tissue using [TA368488] (HELT Antibody) at dilution 1/40 (Original magnification: ×200)



Immunohistochemistry of paraffin-embedded Human tonsil tissue using [TA368488] (HELT Antibody) at dilution 1/40, treated with synthetic peptide. (Original magnification: ×200)