

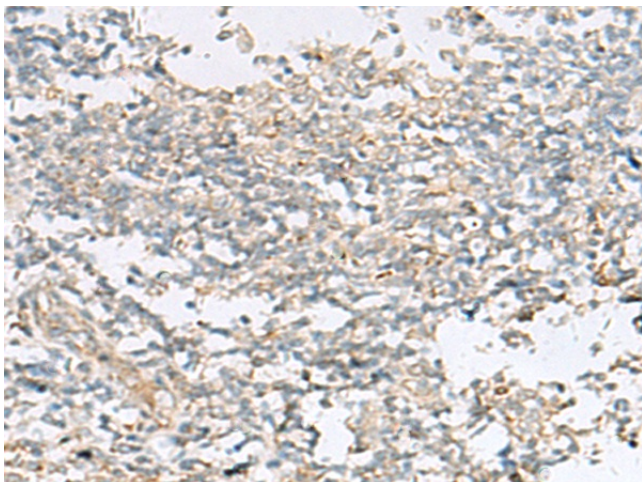
Product datasheet for **TA368487S**

HECA Rabbit Polyclonal Antibody

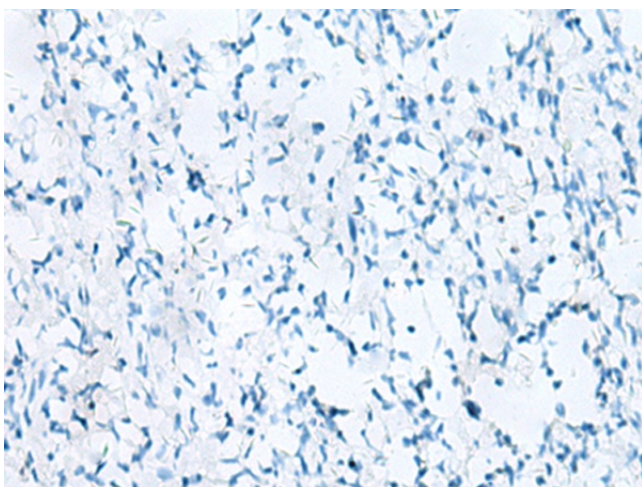
Product data:

Product Type:	Primary Antibodies
Applications:	IHC
Recommended Dilution:	IHC: 20–100 Positive control: Human tonsil Predicted cell location: Cytoplasm or Nucleus
Reactivity:	Human
Host:	Rabbit
Isotype:	IgG
Clonality:	Polyclonal
Immunogen:	Synthetic peptide of human HECA
Formulation:	pH7.4 PBS, 0.05% NaN ₃ , 40% Glycerol
Purification:	Antigen affinity purification
Conjugation:	Unconjugated
Storage:	Store at –20°C.
Stability:	1 year
Gene Name:	hdc homolog, cell cycle regulator
Database Link:	Entrez Gene 51696 Human Q9UBI9
Background:	This gene encodes the homolog of the Drosophila headcase protein, a highly basic, cytoplasmic protein that regulates the re-entry of imaginal cells into the mitotic cycle during adult morphogenesis. In Drosophila, the encoded protein also inhibits terminal branching of neighboring cells during tracheal development.
Synonyms:	dJ225E12.1; HDC; HDCL; headcase; hHDC

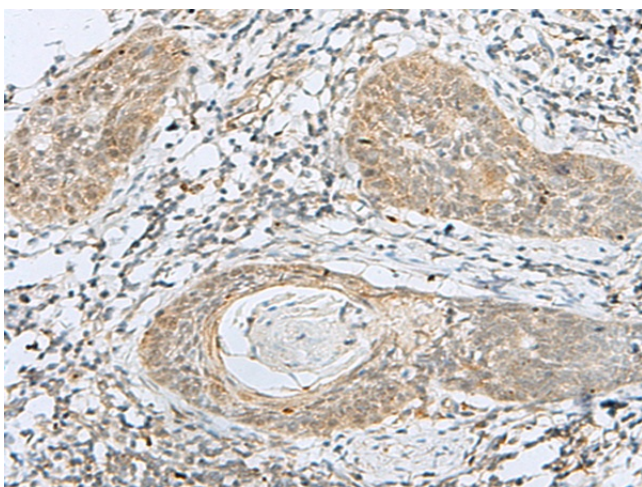


Product images:

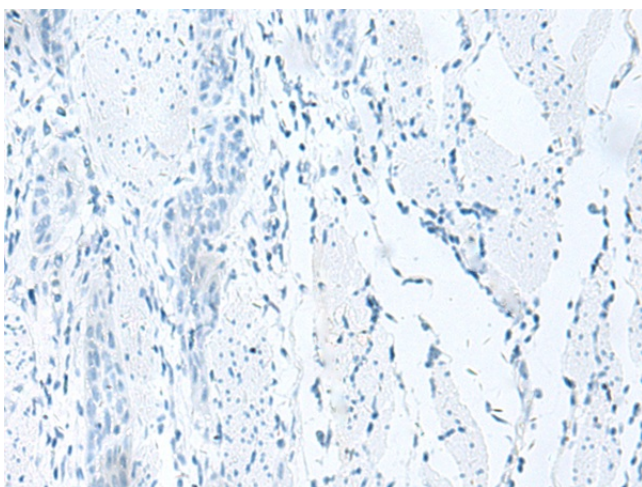
Immunohistochemistry of paraffin-embedded Human tonsil tissue using [TA368487] (HECA Antibody) at dilution 1/20 (Original magnification: $\times 200$)



Immunohistochemistry of paraffin-embedded Human tonsil tissue using [TA368487] (HECA Antibody) at dilution 1/20, treated with synthetic peptide. (Original magnification: $\times 200$)



Immunohistochemistry of paraffin-embedded Human esophagus cancer tissue using [TA368487] (HECA Antibody) at dilution 1/20 (Original magnification: $\times 200$)



Immunohistochemistry of paraffin-embedded Human esophagus cancer tissue using [TA368487] (HECA Antibody) at dilution 1/20, treated with synthetic peptide. (Original magnification: $\times 200$)