

Product datasheet for **TA368476**

HCCA2 (MOB2) Rabbit Polyclonal Antibody

Product data:

Product Type:	Primary Antibodies
Applications:	IHC, WB
Recommended Dilution:	WB: 200-1000 WB positive control: Mouse liver tissue and Rat liver tissue lysates IHC: 20-100 Positive control: Human liver cancer Predicted cell location: Cytoplasm
Reactivity:	Human, Mouse, Rat
Host:	Rabbit
Isotype:	IgG
Clonality:	Polyclonal
Immunogen:	Synthetic peptide of human MOB2
Formulation:	pH7.4 PBS, 0.05% NaN ₃ , 40% Glycerol
Concentration:	lot specific
Purification:	Antigen affinity purification
Conjugation:	Unconjugated
Storage:	Store at -20°C.
Stability:	1 year
Predicted Protein Size:	27 kDa
Gene Name:	MOB kinase activator 2
Database Link:	Entrez Gene 81532 Human Q70IA6



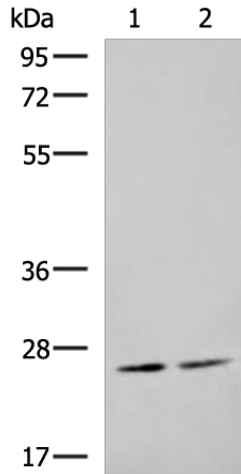
[View online »](#)

Background:

MOB2 (Mps one binder kinase activator-like 2), also known as HCCA2 (Hepatocellular carcinoma-associated gene 2), is a 467 amino acid protein that belongs to the MOB1/phoecin family. MOB2 is expressed in lung, spleen, brain, and fetal liver. It is highly expressed in hepatocellular carcinoma. MOB2 is localized in the perinuclear region of the cytoplasm in liver cancer tissues and colocalizes with MAD2L2 in the nucleus of Hela cells. MOB2 is characterized by two N-glycosylation sites, six N-myristoylation sites, two Src homology 3 (SH3), and several phosphorylation motifs which indicate that this protein may play a role in an intracellular signal transduction cascade. MOB2 binds to and regulates the autophosphorylation of the related human serine/threonine kinase 38 (NDR1) and serine/threonine kinase 38L(NDR2). It has been shown that MOB2 plays a critical role in cell cycle regulation. Overexpression of the protein during the G0/G1 phase inhibits cell proliferation causing cell cycle arrest. Stimulates the autophosphorylation and kinase activity of STK38 and STK38L.

Synonyms:

HCCA2

Product images:

Gel: 8%SDS-PAGE

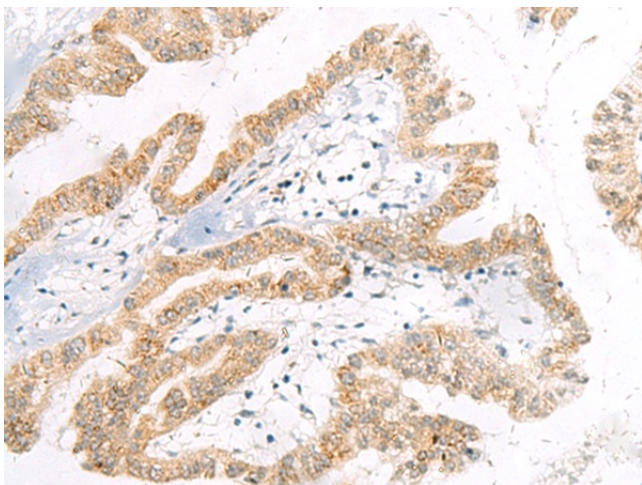
Lysate: 40 µg

Lane 1-2: Mouse liver tissue and Rat liver tissue lysates

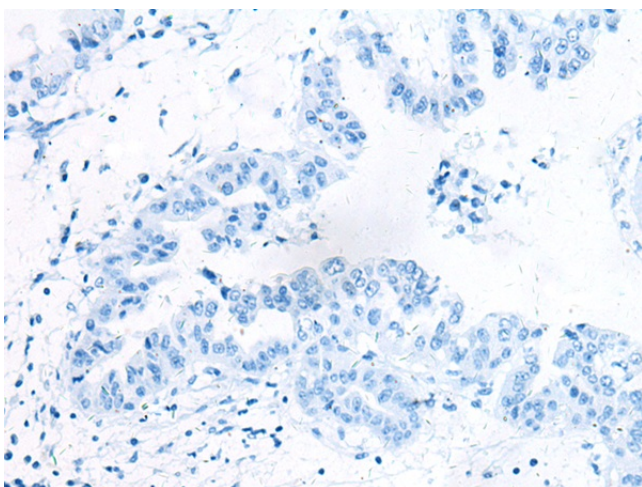
Primary antibody: TA368476 (MOB2 Antibody) at dilution 1/400

Secondary antibody: Goat anti rabbit IgG at 1/5000 dilution

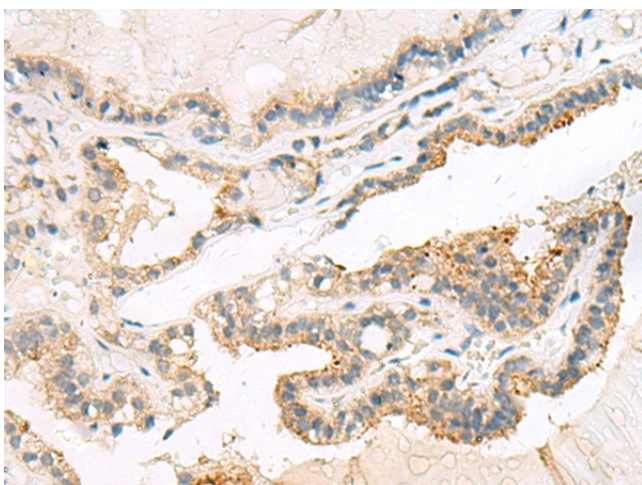
Exposure time: 20 seconds



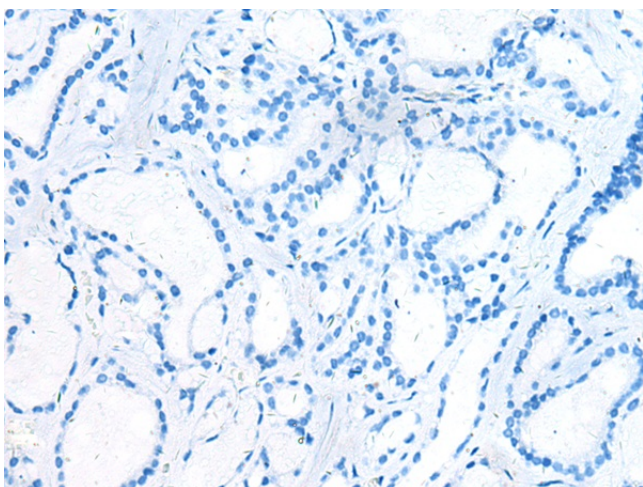
Immunohistochemistry of paraffin-embedded Human liver cancer tissue using TA368476 (MOB2 Antibody) at dilution 1/20 (Original magnification: $\times 200$)



Immunohistochemistry of paraffin-embedded Human liver cancer tissue using TA368476 (MOB2 Antibody) at dilution 1/20, treated with synthetic peptide. (Original magnification: $\times 200$)



Immunohistochemistry of paraffin-embedded Human thyroid cancer tissue using TA368476 (MOB2 Antibody) at dilution 1/20 (Original magnification: $\times 200$)



Immunohistochemistry of paraffin-embedded Human thyroid cancer tissue using TA368476 (MOB2 Antibody) at dilution 1/20, treated with synthetic peptide. (Original magnification: $\times 200$)