

## Product datasheet for **TA368475S**

### **MNX1 Rabbit Polyclonal Antibody**

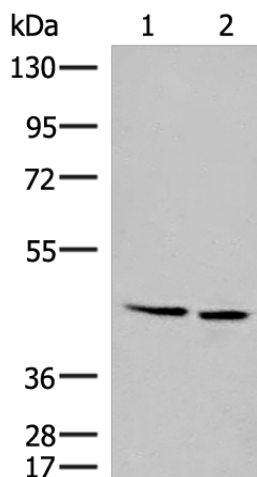
#### **Product data:**

Product Type:	Primary Antibodies
Applications:	WB
Recommended Dilution:	WB: 200-1000 WB positive control: Raji and HepG2 cell lysates
Reactivity:	Human
Host:	Rabbit
Isotype:	IgG
Clonality:	Polyclonal
Immunogen:	Synthetic peptide of human MNX1
Formulation:	pH7.4 PBS, 0.05% NaN <sub>3</sub> , 40% Glycerol
Purification:	Antigen affinity purification
Conjugation:	Unconjugated
Storage:	Store at -20°C.
Stability:	1 year
Predicted Protein Size:	41 kDa
Gene Name:	motor neuron and pancreas homeobox 1
Database Link:	<a href="#">Entrez Gene 3110 Human P50219</a>
Background:	This gene encodes a nuclear protein, which contains a homeobox domain and is a transcription factor. Mutations in this gene result in Currarino syndrome, an autosomic dominant congenital malformation. Alternatively spliced transcript variants encoding different isoforms have been found for this gene.
Synonyms:	HB9; HLXB9; HOXHB9; SCRA1



[View online »](#)

## Product images:



Gel: 8%SDS-PAGE

Lysate: 40  $\mu$ g

Lane 1-2: Raji and HepG2 cell lysates

Primary antibody: [TA368475] (MNX1 Antibody) at dilution 1/200

Secondary antibody: Goat anti rabbit IgG at 1/8000 dilution

Exposure time: 40 seconds