

Product datasheet for **TA368472**

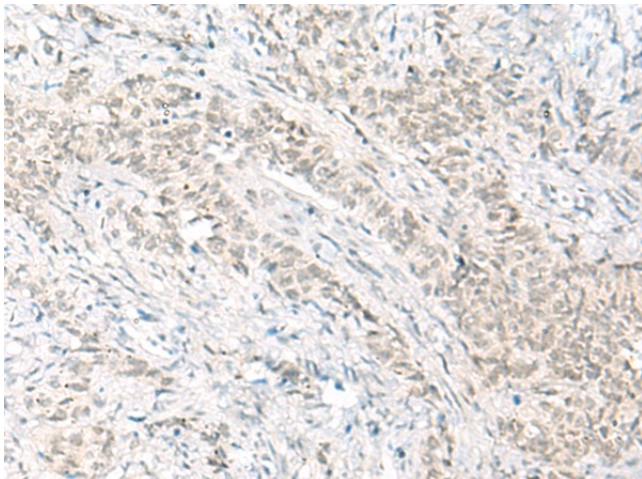
HABP4 Rabbit Polyclonal Antibody

Product data:

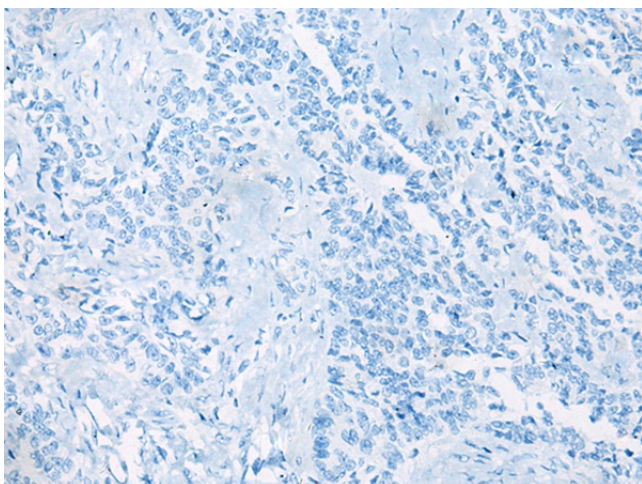
| | |
|-----------------------|---|
| Product Type: | Primary Antibodies |
| Applications: | IHC |
| Recommended Dilution: | IHC: 40-200 Positive control: Human ovarian cancer Predicted cell location: Nucleus |
| Reactivity: | Human, Mouse, Rat |
| Host: | Rabbit |
| Isotype: | IgG |
| Clonality: | Polyclonal |
| Immunogen: | Synthetic peptide of human HABP4 |
| Formulation: | pH7.4 PBS, 0.05% NaN ₃ , 40% Glycerol |
| Concentration: | lot specific |
| Purification: | Antigen affinity purification |
| Conjugation: | Unconjugated |
| Storage: | Store at -20°C. |
| Stability: | 1 year |
| Gene Name: | hyaluronan binding protein 4 |
| Database Link: | Entrez Gene 22927 Human Q5JVS0 |
| Background: | May be involved in nuclear functions such as the remodeling of chromatin and the regulation of transcription. |
| Synonyms: | IHABP4; Ki-1/57; MGC825; SERBP1L |



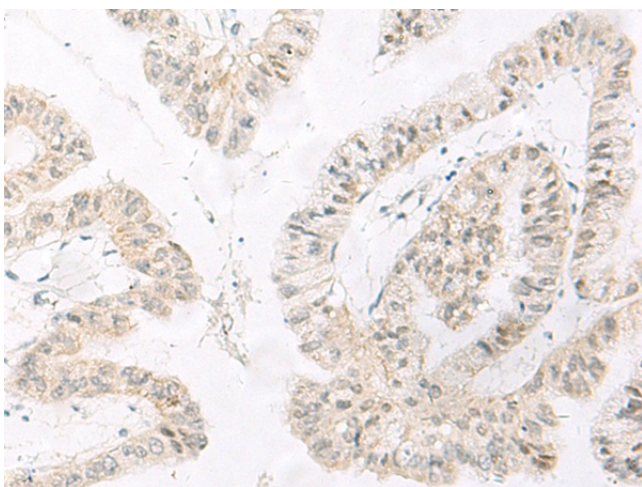
[View online »](#)

Product images:

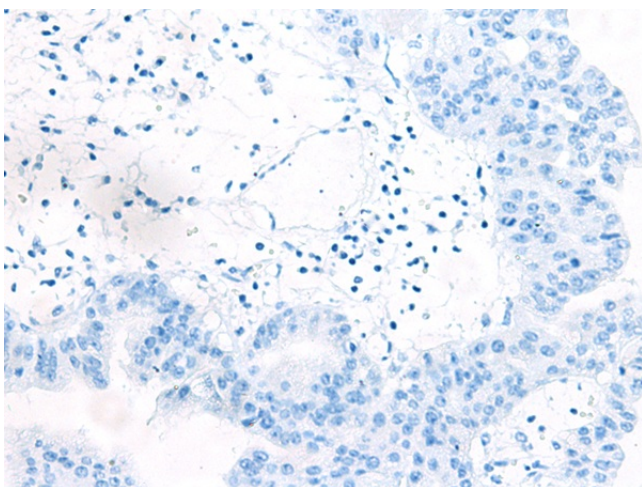
Immunohistochemistry of paraffin-embedded Human ovarian cancer tissue using TA368472 (HABP4 Antibody) at dilution 1/60 (Original magnification: $\times 200$)



Immunohistochemistry of paraffin-embedded Human ovarian cancer tissue using TA368472 (HABP4 Antibody) at dilution 1/60, treated with synthetic peptide. (Original magnification: $\times 200$)



Immunohistochemistry of paraffin-embedded Human liver cancer tissue using TA368472 (HABP4 Antibody) at dilution 1/60 (Original magnification: $\times 200$)



Immunohistochemistry of paraffin-embedded Human liver cancer tissue using TA368472 (HABP4 Antibody) at dilution 1/60, treated with synthetic peptide. (Original magnification: $\times 200$)