

Product datasheet for **TA368470**

Guanylin (GUCA2A) Rabbit Polyclonal Antibody

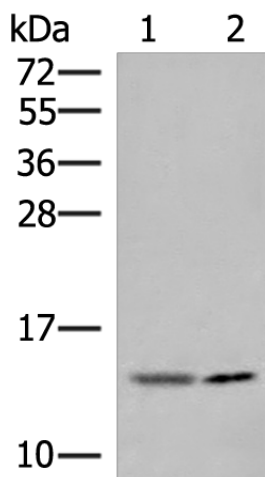
Product data:

Product Type:	Primary Antibodies
Applications:	IHC, WB
Recommended Dilution:	WB: 200-1000 WB positive control: Mouse small intestines tissue and K562 cell lysates IHC: 30-150 Positive control: Human cervical cancer Predicted cell location: Secreted
Reactivity:	Human
Host:	Rabbit
Isotype:	IgG
Clonality:	Polyclonal
Immunogen:	Synthetic peptide of human GUCA2A
Formulation:	pH7.4 PBS, 0.05% NaN ₃ , 40% Glycerol
Concentration:	lot specific
Purification:	Antigen affinity purification
Conjugation:	Unconjugated
Storage:	Store at -20°C.
Stability:	1 year
Predicted Protein Size:	12 kDa
Gene Name:	guanylate cyclase activator 2A
Database Link:	Entrez Gene 2980 Human Q02747
Background:	Endogenous activator of intestinal guanylate cyclase. It stimulates this enzyme through the same receptor binding region as the heat-stable enterotoxins.
Synonyms:	Gap-I; GUANYLIN; GUCA2; STARA

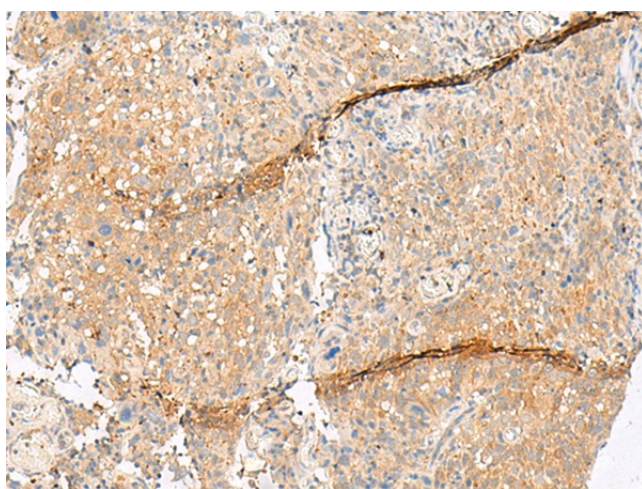


[View online »](#)

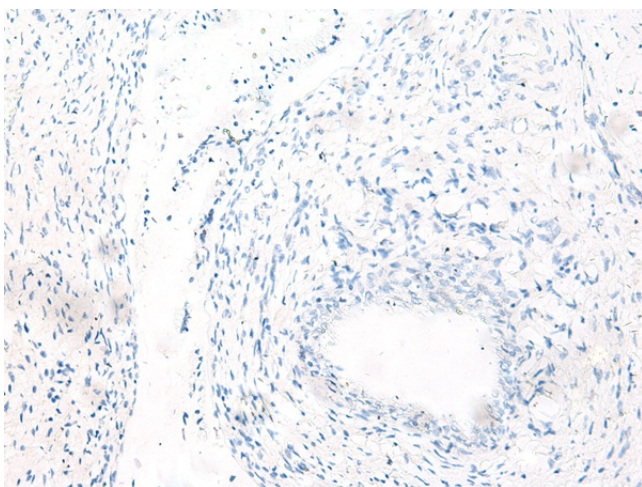
Product images:



Gel: 12%SDS-PAGE
 Lysate: 40 μ g
 Lane 1-2: Mouse small intestines tissue and K562 cell lysates
 Primary antibody: TA368470 (GUCA2A Antibody) at dilution 1/550
 Secondary antibody: Goat anti rabbit IgG at 1/8000 dilution
 Exposure time: 10 minutes



Immunohistochemistry of paraffin-embedded Human cervical cancer tissue using TA368470 (GUCA2A Antibody) at dilution 1/45 (Original magnification: \times 200)



Immunohistochemistry of paraffin-embedded Human cervical cancer tissue using TA368470 (GUCA2A Antibody) at dilution 1/45, treated with synthetic peptide. (Original magnification: ×200)