

Product datasheet for **TA368456**

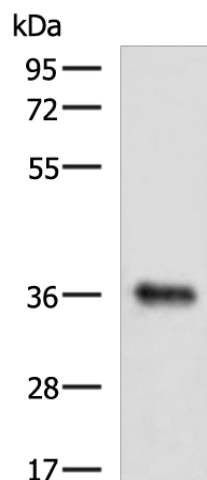
GRHPR Rabbit Polyclonal Antibody

Product data:

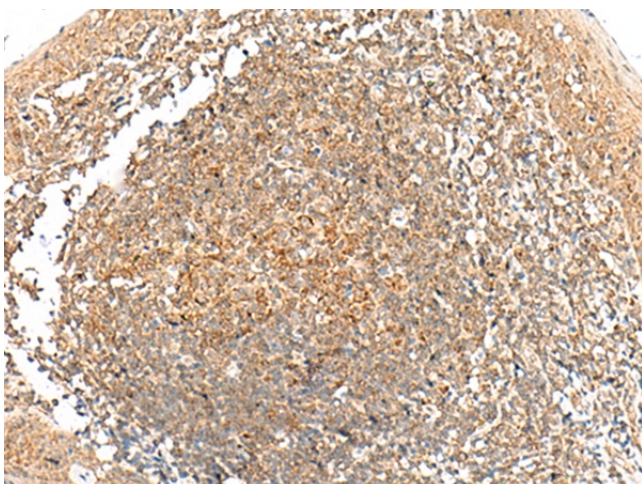
Product Type:	Primary Antibodies
Applications:	IHC, WB
Recommended Dilution:	WB: 500-2000 WB positive control: Mouse liver tissue lysate IHC: 30-150 Positive control: Human tonsil Predicted cell location: Cell membrane
Reactivity:	Human, Mouse
Host:	Rabbit
Isotype:	IgG
Clonality:	Polyclonal
Immunogen:	Synthetic peptide of human GRHPR
Formulation:	pH7.4 PBS, 0.05% NaN ₃ , 40% Glycerol
Concentration:	lot specific
Purification:	Antigen affinity purification
Conjugation:	Unconjugated
Storage:	Store at -20°C.
Stability:	1 year
Predicted Protein Size:	36 kDa
Gene Name:	glyoxylate reductase/hydroxypyruvate reductase
Database Link:	Entrez Gene 9380 Human Q9UBQ7
Background:	This gene encodes an enzyme with hydroxypyruvate reductase, glyoxylate reductase, and D-glycerate dehydrogenase enzymatic activities. The enzyme has widespread tissue expression and has a role in metabolism. Type II hyperoxaluria is caused by mutations in this gene.
Synonyms:	GLXR; GLYD; PH2



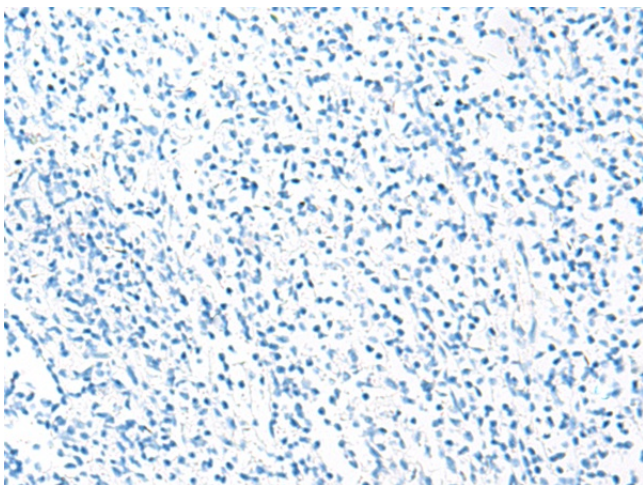
[View online »](#)

Product images:

Gel: 8%SDS-PAGE
Lysate: 40 μ g
Lane: Mouse liver tissue lysate
Primary antibody: TA368456 (GRHPR Antibody) at dilution 1/900
Secondary antibody: Goat anti rabbit IgG at 1/5000 dilution
Exposure time: 1 minute



Immunohistochemistry of paraffin-embedded Human tonsil tissue using TA368456 (GRHPR Antibody) at dilution 1/35 (Original magnification: \times 200)



Immunohistochemistry of paraffin-embedded Human tonsil tissue using TA368456 (GRHPR Antibody) at dilution 1/35, treated with synthetic peptide. (Original magnification: $\times 200$)