

Product datasheet for **TA368454**

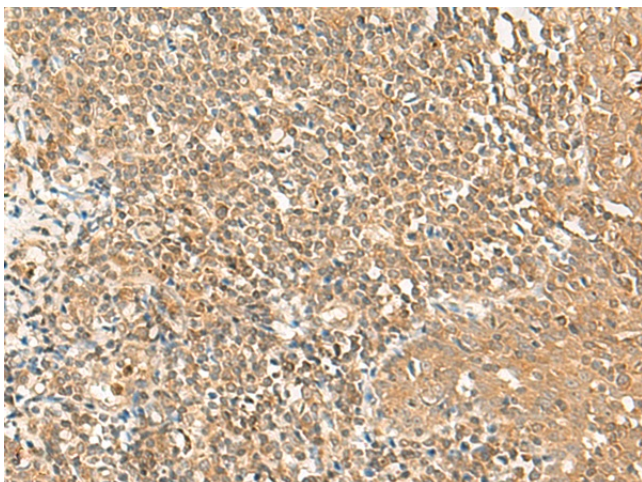
GRASP1 (GRIPAP1) Rabbit Polyclonal Antibody

Product data:

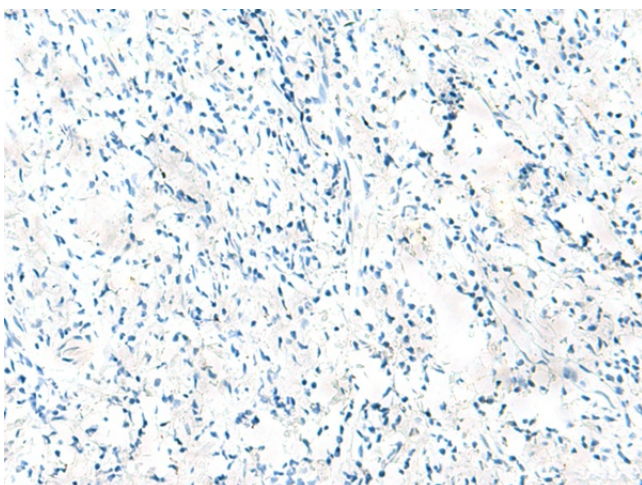
| | |
|-----------------------|--|
| Product Type: | Primary Antibodies |
| Applications: | IHC |
| Recommended Dilution: | IHC: 50-300 Positive control: Human tonsil Predicted cell location: Cytoplasm |
| Reactivity: | Human, Mouse, Rat |
| Host: | Rabbit |
| Isotype: | IgG |
| Clonality: | Polyclonal |
| Immunogen: | Synthetic peptide of human GRIPAP1 |
| Formulation: | pH7.4 PBS, 0.05% NaN ₃ , 40% Glycerol |
| Concentration: | lot specific |
| Purification: | Antigen affinity purification |
| Conjugation: | Unconjugated |
| Storage: | Store at -20°C. |
| Stability: | 1 year |
| Gene Name: | GRIP1 associated protein 1 |
| Database Link: | Entrez Gene 56850 Human Q4V328 |
| Background: | This gene encodes a guanine nucleotide exchange factor for the Ras family of small G proteins (RasGEF). The encoded protein interacts in a complex with glutamate receptor interacting protein 1 (GRIP1) and plays a role in the regulation of AMPA receptor function. |
| Synonyms: | DKFZp434P0630; GRASP-1; GRASP1; KIAA1167; MGC126593; MGC126595; MPMGp800B12492Q3 |



[View online »](#)

Product images:

Immunohistochemistry of paraffin-embedded Human tonsil tissue using TA368454 (GRIPAP1 Antibody) at dilution 1/50 (Original magnification: ×200)



Immunohistochemistry of paraffin-embedded Human tonsil tissue using TA368454 (GRIPAP1 Antibody) at dilution 1/50, treated with synthetic peptide. (Original magnification: ×200)