

## Product datasheet for **TA368453S**

### GRAMD2A Rabbit Polyclonal Antibody

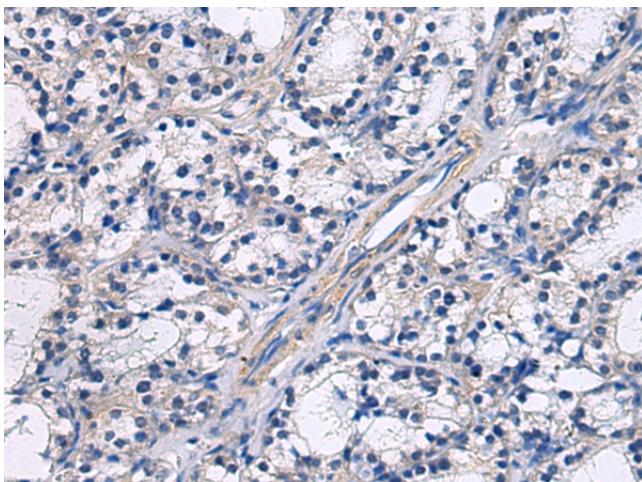
#### Product data:

|                       |  |
|-----------------------|--|
| Product Type:         | Primary Antibodies   |
| Applications:         | IHC  |
| Recommended Dilution: | IHC: 25-50<br>Positive control: Human thyroid cancer<br>Predicted cell location: Cytoplasm   |
| Reactivity:           | Human  |
| Host:                 | Rabbit   |
| Isotype:              | IgG  |
| Clonality:            | Polyclonal   |
| Immunogen:            | Synthetic peptide of human GRAMD2A   |
| Formulation:          | pH7.4 PBS, 0.05% NaN <sub>3</sub> , 40% Glycerol   |
| Purification:         | Antigen affinity purification  |
| Conjugation:          | Unconjugated   |
| Storage:              | Store at -20°C.  |
| Stability:            | 1 year   |
| Gene Name:            | GRAM domain containing 2   |
| Database Link:        | <a href="#">Entrez Gene 196996 Human Q8IUW3</a>  |
| Background:           | Participates in the organization of endoplasmic reticulum-plasma membrane contact sites (EPCS) with pleiotropic functions including STIM1 recruitment and calcium homeostasis. Constitutive tether that co-localize with ESYT2/3 tethers at endoplasmic reticulum-plasma membrane contact sites in a phosphatidylinositol lipid-dependent manner. Pre-marks the subset of phosphatidylinositol 4,5-bisphosphate (PI(4,5)P <sub>2</sub> )-enriched EPCS destined for the store operated calcium entry pathway (SOCE). |
| Synonyms:             | BC064463   |

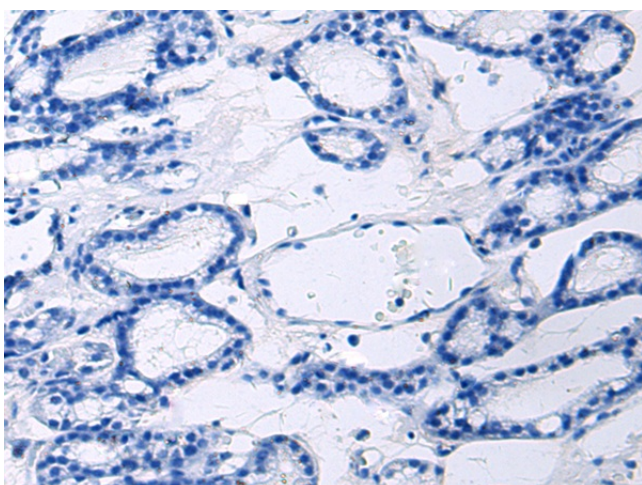


[View online »](#)

## Product images:



Immunohistochemistry of paraffin-embedded Human thyroid cancer using [TA368453] (GRAMD2A Antibody) at dilution 1/45 (Original magnification: ×200)



Immunohistochemistry of paraffin-embedded Human thyroid cancer using [TA368453] (GRAMD2A Antibody) at dilution 1/45, treated with synthetic peptide. (Original magnification: ×200)