

## Product datasheet for **TA368453**

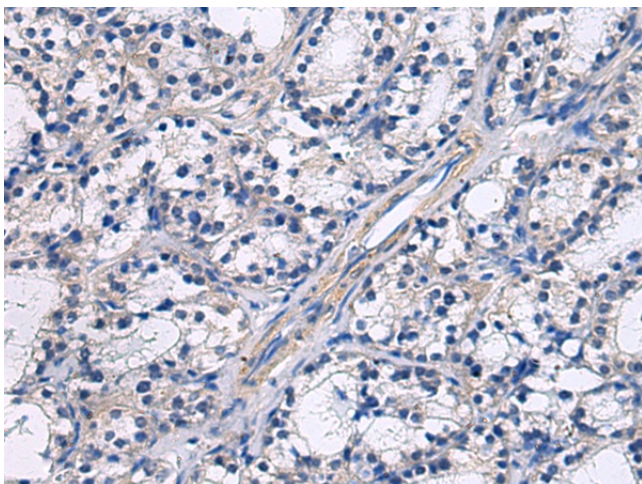
### GRAMD2A Rabbit Polyclonal Antibody

#### Product data:

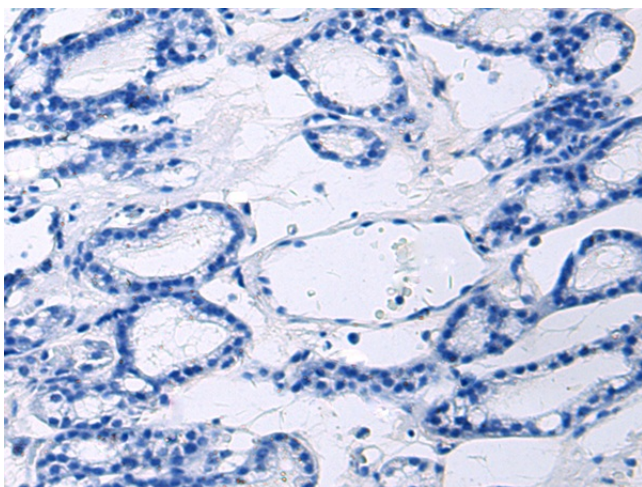
Product Type:	Primary Antibodies
Applications:	IHC
Recommended Dilution:	IHC: 25-50 Positive control: Human thyroid cancer Predicted cell location: Cytoplasm
Reactivity:	Human
Host:	Rabbit
Isotype:	IgG
Clonality:	Polyclonal
Immunogen:	Synthetic peptide of human GRAMD2A
Formulation:	pH7.4 PBS, 0.05% NaN <sub>3</sub> , 40% Glycerol
Concentration:	lot specific
Purification:	Antigen affinity purification
Conjugation:	Unconjugated
Storage:	Store at -20°C.
Stability:	1 year
Gene Name:	GRAM domain containing 2
Database Link:	<a href="#">Entrez Gene 196996 Human Q8IU3</a>
Background:	Participates in the organization of endoplasmic reticulum-plasma membrane contact sites (EPCS) with pleiotropic functions including STIM1 recruitment and calcium homeostasis. Constitutive tether that co-localize with ESYT2/3 tethers at endoplasmic reticulum-plasma membrane contact sites in a phosphatidylinositol lipid-dependent manner. Pre-marks the subset of phosphatidylinositol 4,5-bisphosphate (PI(4,5)P <sub>2</sub> )-enriched EPCS destined for the store operated calcium entry pathway (SOCE).
Synonyms:	BC064463



[View online »](#)

**Product images:**

Immunohistochemistry of paraffin-embedded Human thyroid cancer using TA368453 (GRAMD2A Antibody) at dilution 1/45 (Original magnification:  $\times 200$ )



Immunohistochemistry of paraffin-embedded Human thyroid cancer using TA368453 (GRAMD2A Antibody) at dilution 1/45, treated with synthetic peptide. (Original magnification:  $\times 200$ )